

Historic, Archive Document

Do not assume content reflects current scientific knowledge, policies, or practices.

1945

SEED *and* BULB CATALOG

Fairway
GARDENS
PARK RIDGE, ILL.

LIBRARY
RECORDED
★ MAR 3 - 1945 ★
U. S. Department of Agriculture

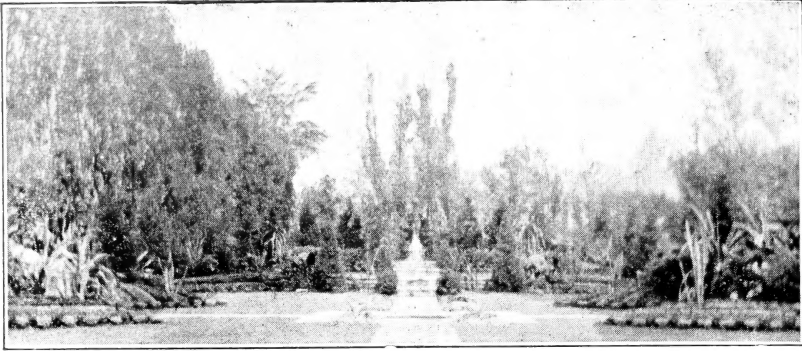


A Fairway Aster



Fairway's
Victory Gardens

SEE PAGE 45



FAIRWAY'S SPECIAL LAWN GRASS SEED

This is positively the best mixture consisting of Kentucky blue grass, white clover and other grasses of the best quality, making a beautiful, thick and velvety perpetual lawn.

FAIRWAY'S "BEST QUALITY" GRASS SEED

1/2 lb. \$0.40	3 lb. \$1.75	15 lb. \$ 8.50
1 lb.60	5 lb. 2.85	25 lb. 14.00
2 lb. 1.20	10 lb. 5.65	50 lb. 26.50
	100 lb. 51.00	

This is an especially prepared mixture and only the highest quality seeds that can be produced are used. It makes a smooth, velvety green

lawn that forms a thick, even sod. Sure to produce under average conditions of soil and climate.

FAIRWAY'S "PERENNIAL GREEN"

A prepared mixture that will give excellent results. It produces a deep green sod of velvety texture. It is a blend of high grade seeds that will produce a beautiful and enduring lawn.

1 lb. \$0.40	10 lb. \$3.70
2 lb.80	15 lb. 5.25
3 lb. 1.15	25 lb. 8.25
5 lb. 1.95	50 lb. 16.00
	100 lb. 31.00

FAIRWAY'S "SHADY"

A mixture for planting under shade trees or in shady corners where the usual grass seed does not do well. It is a blend of choice seeds adapted to shady locations.

1 lb. \$0.70	10 lb. \$6.40
2 lb. 1.40	15 lb. 9.40
3 lb. 2.00	25 lb. 15.25
5 lb. 3.25	50 lb. 29.50
	100 lb. 57.00

HIGHEST GRADE GRASS SEED AT PRICES YOU GENERALLY PAY FOR ORDINARY
GRASS SEED

All Lawn Grass Seeds Prepaid

FAIRWAY'S ALL SUMMER GARDEN

Blooms from Spring to Fall

This is an outstanding packet containing over seventy-five different kinds of annual flower seeds and should be grown in every garden. All colors and sizes of flowers. A beautiful garden for cut flowers. Reserve a spot in your garden.

What is more pleasing than going out every morning and picking a fresh bouquet of flowers. Plant after danger of frost is past and rake over soil to cover seed, keep moist, do not let a dry crust develop on the patch and you will have the most gorgeous garden you have ever seen.

Fairway's Complete Garden - pkt. 10c

SEE VICTORY GARDEN SPECIALS ON PAGE 45

We again take this opportunity to offer you our catalog of flower and vegetable seeds, gladiolus, iris and garden accessories. We know a large number of our customers are preparing for a VICTORY GARDEN this coming season and will co-operate with our government which will materially help them in supplying our Armed Forces with the food required to feed them. Living costs are high, and with a little healthful exercise, we can take care of a garden which will supply us fresh vegetables for our table with the best flavor, also canning and storage for the coming winter.

Last year VICTORY GARDENS produced an enormous supply of vegetables, which definitely helped our war effort, but with the war still on we will need a much larger amount, as we have a larger fighting force.

Our catalog contains a large list of seeds which have stood the test for years, and will give our customers full satisfaction. Kindly accept our thanks for your patronage in the past and hope we may assist you in the future.

Fairway Gardens
PARK RIDGE, ILLINOIS

INSTRUCTIONS

When ordering please write your name, postoffice and state plainly, as it helps us give better service in making delivery to you. Would advise sending cash with order by express or registered mail, by check, or by Postal Money Order. Postage stamps are a convenient and acceptable way of remitting for small orders. Foreign stamps not acceptable.

All Goods Prepaid, unless otherwise noted.

We ship orders promptly, or notify you if goods are to be sent later. If you do not hear from us in ten days, please write us at once.

FAIRWAY GARDENS GUARANTEES its seeds to the full amount of purchase price and will replace same if, through fault of the seeds, results are not satisfactory. But in no case will be liable for more than the purchase price. It is impossible, as a seller of perishable articles, to be responsible for what may happen after they leave our hands, so we, like all other American seed houses, do not assume responsibility as to the crop you may raise from seeds we sell. We should be notified immediately if seed is unsatisfactory.

This issue of our Catalog cancels all previous prices.

1945 'ALL-AMERICA' SELECTIONS—OFFICIAL LIST

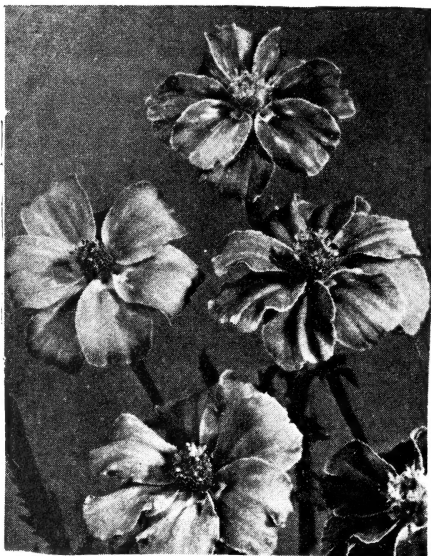
FLOWERS

SILVER MEDAL

Marigold, Flash—A New French Hybrid, flower in 8 weeks, about 18 inches tall, colors range from vivid red through bronze and tangerine with a few yellows, blossoms $1\frac{3}{4}$ inches and more across and continues in bloom until frost. Pkt. 25c.

BRONZE MEDAL

Marigold, Real Gold—The largest of carnation marigold, bossoms $4\frac{1}{2}$ inches across, fully double, ruffled, of a golden orange color, plants 30 inches tall, strong and erect, an early bloomer. Pkt. 25c.



Flash.



REAL GOLD MARIGOLD

BRONZE MEDAL

Petunia, All Double America—Uniform hybrid carnation flowered, medium sized blooms borne in abundance from early summer to frost. Color is mauvy-pink, very attractive for bedding and cutting. The first all double produced in America. Pkt. 50c.

VEGETABLES

BRONZE MEDAL

Great Lakes Lettuce—It is a crisphead or Iceberg type, it is also a summer lettuce and stands the heat and sun well, remarkably slow to throw a seed head and very resistant to tip-burn. Pkt. 15c

HONORABLE MENTION

Bean, Keystonian Greenpod—A bush snap bean, of excellent flavor and dependable production. It is entirely stringless and fiberless, round, meaty and straight poded. Sturdy growth and longer producer than most. Pkt. 15c

"NOVELTY SELECTIONS"

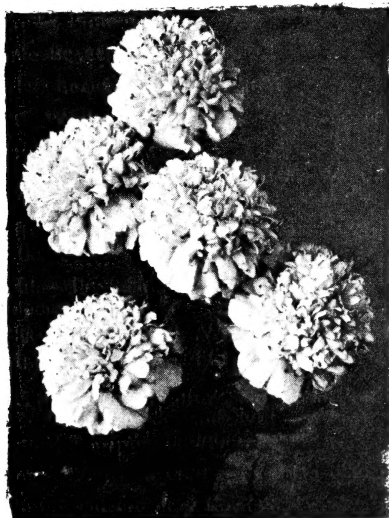
Marigold, Goldsmith—Giant Chrysanthemum-flowered golden orange, base-branching and very good for cutting. Of the Dixie Sunshine type with full double flowers. Early and freeblooming on strong bushy plants.

Cleome, Pink Queen—This beautiful Spider Plant grows well in any part of the country. A tall and attractive border plant, free from insects and disease, with huge heads of delightful and refreshing pink, without a trace of blue or magenta. The large flower bracts turn to white before falling, giving an appearance of a white collar with a pink cap. Reaches over 4 feet, well branched, airy foliage, blooming from June until frost.

Ipomoea, Pearly Gates—A sport from and seemingly identical in growth, foliage and bloom, except white in color, with Heavenly Blue Morning Glory. A big, satiny white, with a creamy shading in the throat, gives this a beautiful appearance. Plant with Heavenly Blue and Crimson Rambler or Scarlet O'Hara for red, white and blue effect.

Cosmos, Yellow Flare—Similar to the original Orange Flare, except its color is a very rich and compelling butter or golden yellow. More striking in color than Orange Flare. Grows 3 to 4 feet tall, and an excellent garden flower. Free blooming on long wiry stems, and taller than present strain of airy serrated foliage.

Phlox, Rosy Morn—Gigantea single, annual phlox of brilliant rose with white eye. Large flowered, early and free bloomer. About twelve inches tall and very uniform.



MARIGOLD
Dwarf French Double Butterball

Aster, Extra Early Giant Crego, Navy Blue—Large four inch long petaled double flowers of deep purple blue, described as blackish blue. Quite true and uniform, twelve to twenty inches high, strong cutting stems. Good branching habit and narrow foliage, fine early cutting type. A valuable addition to early flowering class.

Petunia, Cheerful—A salmon-pink free flowering petunia. Plants are dwarf, rather compact, growing about 10 inches high with blossoms 2 1/4 inches across. Ideal for borders, beds and edgings. In bloom from early summer until frost.

Marigold, Mammoth Mum—The largest of the chrysanthemum type. Fluffy ball-like incurved rich lemon-yellow 3 inch across blossoms. Plants about 30 inches tall of rich dark green ornamental leaves.

Scabiosa, Peace—Semi-tall, double white, companion to Bronze Medal winner of 1940. Heavenly Blue. Good for cutting and easier handled garden type than tall varieties.

Marigold, Spry—Dwarf, double French type, compact and uniform, very good for edging. Early blooming, about nine inches in height, with light orange crested center and maroon outer petals.

Aster, Rose Marie—Wilt-resistant and of the Early Giant type of China asters. High fluffy centers with long narrow petals and rose-pink in color. Flowers three to four inches; stems long and sturdy.

Marigold, Butterball—Dwarf French Double. Very compact, scabious-flowered, canary yellow. Only 6 to 10 inches tall, uniform, very early and continuous flowering. A very bright and luminous bedding or edging variety which you will like very much, as it adds color to the garden. Rich dense foliage, well covered with small 1 1/4 inch blooms.

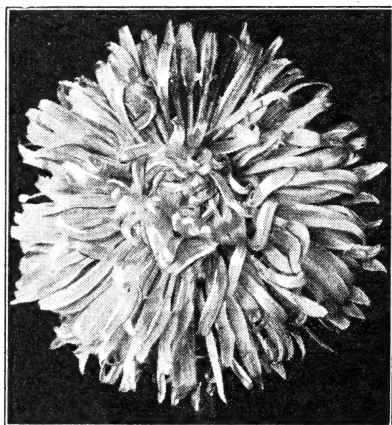
Marigold, Mission Giant, Yellowstone—Bright rich clear yellow counterpart to Goldsmith, 1941 Bronze Medal winner. It has large 2 1/2 inch flowers, on luxurious, large plants. Flowers are of double, incurved, Chrysanthemum-like form, and very attractive. Growing about 3 to 5 feet tall.

Marigold, Sunkist—Dwarf French Harmony type. Developed orange sport from ALL-AMERICA winner Butterball, dwarf, compact, very early, continuous blooming. Six to ten inches tall, very free flowering. Good for bedding, edging and pots.

Each of the above, Pkt. 15c

Fairway Gardens SUPER SPECIALS

Asters **Combination A**
 1 Pkt. Red Giant Branching
 1 Pkt. White Giant Branching
 1 Pkt. Pink Giant Branching
 1 Pkt. Purple Giant Branching
All for 10c



ASTER, Vick's Supreme

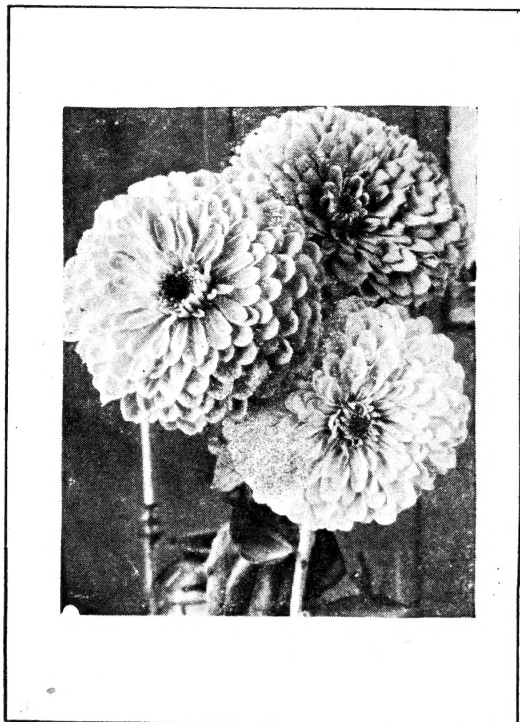
Asters **Combination B**
 1 Pkt. Crimson Crego
 1 Pkt. Pink Crego
 1 Pkt. Lavender Crego
 1 Pkt. White Crego
All for 10c



ASTER GIANT CREGO

Marigolds **Combination F**
 1 Pkt. All-double Orange, Giant
 1 Pkt. All-double Lemon, Giant
 1 Pkt. French Dwarf, Double
 1 Pkt. Mexican Dwarf, Double
4 Pkts. for 10c

Zinnias **Combination E**
 1 Pkt. California Giants, Mixed
 1 Pkt. Fantasy, Mixed
 1 Pkt. Pompon or Lilliput, Mixed
 1 Pkt. Dahlia Flowered
4 Pkts. for 10c



ZINNIAS

FAIRWAY GARDENS TESTED ANNUAL FLOWER SEEDS

ABRONIA (Sand Verbena)—Trailing plant, verbena-like flowers. Adapted to dry soil and sunny location. Pkt. 10c; ¼ oz. 25c.

ACROCLINIUM (Everlasting) — Daisy-like flowers, when cut in bud can be dried and used for house bouquets. Double Pink, Double White, Double Mixed, Single Mixed. Each of the above: Pkt. 10c; ½ oz. \$1.00.

ADONIS (Aestivalis or Pheasant Eye)—Feathery foliage, crimson flowers. Sow where plants remain. Pkt. 10c; ¼ oz. 20c; ½ oz. 35c.

AGERATUM (Floss Flower)—Free flowering annuals, fluffy flowers of blue tone. Does well in sun or part shade.

Blue Perfection—8 in. soft blue lavender. Pkt. 10c; ⅛ oz. 40c; ¼ oz. 70c.

Blue Ball—8 in., deep blue, compact. Pkt. 10c; ⅛ oz. 20c; ¼ oz. 35c.

Little Blue Star—Bright blue, neat for edgings. Pkt. 10c; ⅛ oz. 40c; ¼ oz. 70c.

Tall Sorts Mixed—Pkt. 10c; ⅛ oz. 40c; ¼ oz. 70c.

Dwarf Sorts Mixed—Pkt. 10c; ⅛ oz. 15c; ¼ oz. 25c.

AGROSTEMMA (Rose of Heaven)—18 in. high, flowers pale rose in color. Sow at intervals all summer. Pkt. 10c; ¼ oz. 20c; ½ oz. 35c.

ALYSSUM—Easily grown, free flowering plants, very popular for use in forming borders or beds where quick growth is desired, very vigorous and hardy.

Carpet of Snow—Dwarf, white flowers, plant compact. Pkt. 10c; ¼ oz. 30c; ½ oz. 55c; oz. \$1.00.

Maritimum (Sweet Alyssum)—Sweet scented, white flowering. Pkt. 10c; ½ oz. 20c; oz. 35c.

Lilac Queen—Delicate lavender deepening in color with the approach of cold weather. Pkt. 10c; ¼ oz. 20c; ½ oz. 35c; oz. 60c.

AMARANTHUS—Tall, vigorous foliage, good for ornamental purposes, very showy flower clusters.

Molten Fire—3 ft., bright poinsettia leaves and top. Pkt. 10c; ⅛ oz. 25c; ¼ oz. 40c.

Tricolor—2½ ft., center bronze outer leaves scarlet gold. Pkt. 10c; ¼ oz. 20c; ½ oz. 35c.

Caudatus—Drooping red spikes. Pkt. 10c; ½ oz. 30c; oz. 50c.

Special Mixed—Pkt. 10c; ¼ oz. 20c; ½ oz. 35c.

ANAGALLIS (Pimpernel)

Coerules—8 in., low growing blue flowers. Must have sun, blooms freely. Pkt. 10c ⅛ oz. 25c; ¼ oz. 40c.

Mixed—Pkt. 10c; ⅛ oz. 25c; ¼ oz. 40c.

ANCHUSA (Summer Forget-Me-Not)

Blue Bird—Annual. About 18 in. high, bearing flowers of deep blue. Pkt. 10c; ⅛ oz. 20c; ¼ oz. 35c.

ANTIRRHINUM (Snapdragon) — Rust-Proc Strain. Universal favorites for adding color to the garden and as cut flowers. Produce freely and last until heavy frost.

Rust-Proof, Giant Flowered,

Maximum Alaska—White.

Autumn Gold—Copper shades.

Canary—Yellow.

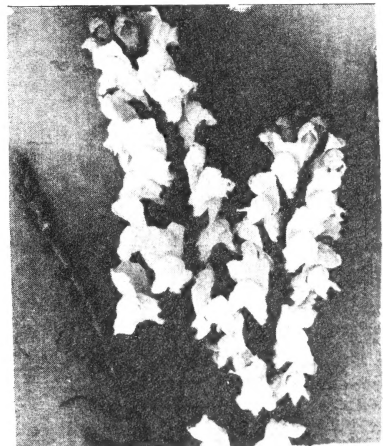
Loveliness—Pink.

Red Cross—Crimson.

Mixed.

Each of the above: Pkt. 15c; ⅛ oz. 30c ⅛ oz. 50c; ¼ oz. 90c.

Antirrhinum, Rosalie—Rust-resistant and a Majus Grandiflorum variety. Color intense rose-pink, with deeper center and gold suffusion. One of the finest cut flower varieties so far produced in the wilt-resistant class. Vigorous grower, flowers well spaced on long stems. Pkt. 20c.



SNAPDRAGON

ANTIRRHINUM (Snapdragon)—Cont.

Semi-tall sorts, 18 in. bedding.

Daphne—Deep rose.

Defiance—Scarlet.

Empress—Crimson.

Fascination—Pink.

Golden Queen—Yellow.

Queen of the North—White.

Mixed.

Each of the above: Pkt. 10c; 1/8 oz. 50c;
1/4 oz. 80c; 1/2 oz. \$1.40.

Select Standard Tall.

Mixed—Pkt. 10c; 1/8 oz. 35c; 1/4 oz. 60c;
1/2 oz. \$1.00.

Dwarf—8 in.

Mixed—Pkt. 10c; 1/8 oz. 45c; 1/4 oz. 70c;
1/2 oz. \$1.20.

BALSAM (Lady Slipper)

Bush Double.

Red, Pink, White.

Each of the above: Pkt. 10c; 1/8 oz. 20c;
1/4 oz. 35c.

Mixed—Pkt. 10c; 1/8 oz. 20c; 1/4 oz. 35c.

Lady Slipper—1 1/2 to 2 ft.

Pink, White, Lilac, Scarlet, Rose.

Each of the above: Pkt. 10c; 1/8 oz. 25c.
1/4 oz. 40c.

Mixed—Pkt. 10c; 1/8 oz. 20c; 1/4 oz. 35c.

ASTERS

Fairway's Wilt-Resistant Giant Branching.

Large-stemmed, vigorous and strong growing, double blooms of many colors.

White, Shell-pink, Purple, Crimson, Lavender.

FAIRWAY'S SPECIAL MIXTURE

Any of the above: Pkt. 10c; 1/8 oz. 30c.

Fairway's Wilt-Resistant Giant Crego

Immense flowers, on long stems, with curled and twisted petals. Color very brilliant.

White, Shell-pink, Purple, Crimson, Lavender.

FAIRWAY'S SPECIAL MIXTURE

Any of the above: Pkt. 10c; 1/8 oz. 30c.

Giant California Sunshine

Large flowered, with loosely placed outer petals, giving a lacy effect which is very pleasing to the eye.

White, Pink, Rose, Lavender, Purple.

FAIRWAY'S SPECIAL MIXTURE

Any of the above: Pkt. 20c; 1/8 oz. 65c.



ASTER

Double Dwarf—12 in.

Bushy, covered completely with flowers of dainty colors.

White, Pink, Scarlet, Mixed.

Any of the above: Pkt. 10c; 1/8 oz. 50c.

Giant Peony Flowered—20 in.

Large double flowers splendid for cutting, long stemmed.

White, Pink, Rose, Purple, Blue, Mixed.

Any of the above: Pkt. 20c; 1/8 oz. 50c.

Pompon Asters—10 in.

Plants compact, blooms early and freely.

White, Rose, Crimson, Blue, Mixed.

Any of the above: Pkt. 15c; 1/8 oz. 50c.

BALLOON VINE—Free growing, 10 to 12 ft.

high, clusters of blossoms, seed pods resemble balloons. Pkt. 10c; 1/2 oz. 15c.

BELLIS PERENNIS (English Daisy)—6 in.,

small bright colored flowers, long blooming period.

White, Pink, Mixed.

Any of the above: Pkt. 10c; 1/8 oz. \$1.25;

BEGONIAS (Bedding Variety)—Small brilliant

flowers all summer, 10 in. high, seed very small, handle carefully.

Red, Pink, Rose, Scarlet, White.

Any of the above: Pkt. 25c; any 2 pkts. 45c.

BROWALLIA—12 in., blooms profusely to

autumn, intense blue flowers, fine for cutting.

Blue, White, Mixed.

Price of the above: Pkt. 10c; 1/4 oz. 30c.

CALENDULAS (Scotch or Pot Marigolds)—

Plants bloom from early summer until frost, of easy culture, make good cut flowers. Puts color in any garden.

Orange Shaggy—Long petals turning orange to light orange, giving two toned effect, long stemmed.

Orange King—Rich orange, large flowers.

Radio—Clear orange, beautifully quilled, giving extra beauty.

Moonlight — Soft cream yellow, nearest to white.

Ball Orange—Large double flowers of orange color.

Campfire—Long stem, deep orange with scarlet sheen.

Pastel Bedding—Dwarf. A mixture of salmon, orange and lemon.

Any of the above: Pkt. 10c; ¼ oz. 30c.

APRICOT QUEEN—Bright apricot, deeper toward center.

SUNSHINE—Bright canary yellow, petals edged bronze.

MASTERPIECE—Golden in color shaded mahogany-red.

GOLDEN—Edges light shading to deep golden orange in center.

Any of the above: Pkt. 10c; ¼ oz. 30c; ½ oz. 50c.

CALLIOPSIS—Vigorous, bushy plants, free blooming. Equally effective in beds, borders, or as cut flowers.

Drummondii (Golden Wave)—Reddish brown centers with outer parts golden yellow.

Nigra Speciosa—3 ft., large deep maroon.

Special Mixed—Golden to maroon shades.

Any of the above: Pkt. 10c; ¼ oz. 20c; ½ oz. 35c.

Miniature—9 to 12 in. in height. Very showy, ideal for rock gardens and edgings.

Dazzler—Large maroon-red edged with golden yellow.

Crimson King—Rich crimson, medium large flowers.

Dwarf Mixed—Art shades, very selected.

Any of the above: Pkt. 10c; ¼ oz. 20c; ½ oz. 35c.

CAMPANULA (Annual Canterbury Bells)—

Shape and form same as the well known biennial Campanula. Bloom from seed the same year.

Rose, Violet, Pink, Red, Mixed.

Any of the above: Pkt. 10c; ⅛ oz. 25c; ¼ oz. 45c.

CANARY BIRD VINE—Rapid growing vine, canary-yellow flowers, fine for porches. Grows well in shade. Soak seed 24 hours before planting. Pkt. 10c; ½ oz. 25c.

CANDYTUFT—1 ft. plants and flowers like Sweet Alyssum. Umbellata type.

White, Purple, Flesh-pink, Carmine, Mixed. Any of the above: Pkt. 10c; ¼ oz. 20c.

Coronaria-Empress White — Large flowering. Pkt. 10c; ⅛ oz. 15c; ¼ oz. 25c.

CANTERBURY BELLS (see **Campanula**).

CARDINAL CLIMBER — Rapid growing in sunny place, fern-like foliage with cardinal flowers. Pkt. 10c; ¼ oz. 30c.

CARNATIONS—Improved Early Flowering—15 to 18 in. high. Flowers double and of large size. If dug in latter part of September and taken indoors, will bloom again. White, Yellow, Pink, Maroon Scarlet, Mixed. Any of the above: Pkt. 10c; ⅛ oz. 50c.

CASTOR BEANS (see **Ricinus**).

CELOSIA (Coxcomb)—Ostrich plumed, or combed varieties. Very effective in beds or backgrounds, fine for cutting and drying, blooms until frost.

Ostrich Plumed Variety.

Orange, Crimson, Mixed.

Price of above: Pkt. 10c; ⅛ oz. 20c.

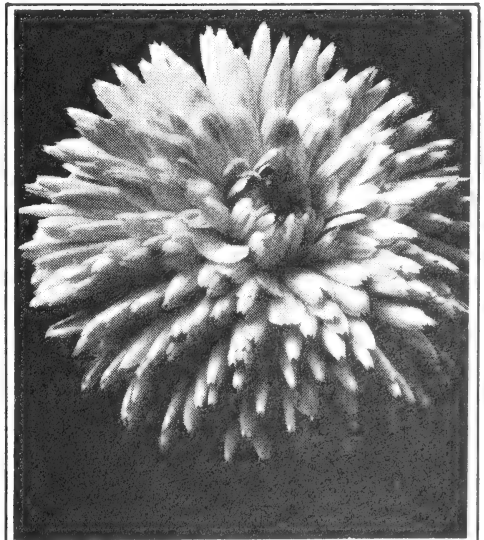
Crested or Combed Variety.

Dwarf Mixed—Pkt. 10c; ⅛ oz. 30c.

Tall Mixed—Pkt. 10c; ⅛ oz. 20c.

Flame of Fire—Globe Celosia—1½ ft. high, showy, fiery scarlet flowers. Pyramidal habit, branching. Pkt. 10c; ⅛ oz. 50c.

CENTAUREA (Double Cornflower or Bachelor Button)—Plants 2 to 2½ ft. tall, free bloomer and very vigorous grower. Muave, Rose, Crimson, Purple, Mixed. Price of above: Pkt. 10c; ¼ oz. 20c;



CALENDULA

Imperialis Centaurea (Improved Giant Sweet Sultan)—Sweet scented, long stemmed flowers of artistic shape.

Lilac, Purple, Rose, White, Mixed.

Price of above; Pkt. 10c; ¼ oz. 25c; ½ oz. 40c.

Jubilee Gem—Dwarf. Covered with dark blue, double flowers. Excellent for borders, rock gardens and pots. Pkt. 15c; ¼ oz. 50c.

CHINESE FORGET-ME-NOT (Cynoglossum)—2 ft. high. Long sprays of blue Forget-Me-Not like flowers, long blooming season.

Amable Blue—Blue with somewhat lighter center. Pkt. 10c; ¼ oz. 75c.

Amable Pink—Bright in color. Pkt. 15c; ¼ oz. 75c.

CHRYSANTHEMUMS—Annual.

Yellowstone—Sulphur-yellow, double flowers, good bloomer, fine for cutting. Pkt. 10c; ½ oz. 30c.

Nivellii—2 ft., large yellow single flowers, bushy plants. Pkt. 10c; ¼ oz. 20c.

Fairway's Special Mixed, Double. Pkt. 10c. ¼ oz. 30c.

Fairway's Special Mixed, Single. Pkt. 10c. ¼ oz. 25c.

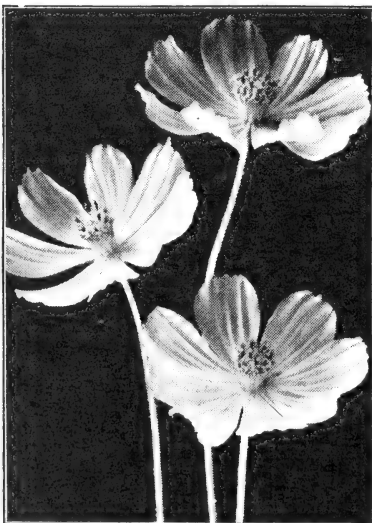
CLARKIA—2 ft. in height, a very bushy plant. Attractive tones of pink and rose, colored flowers resembling those of the flowering almond.

White, Carmine, Pink, Purple, Mixed.

Any of the above: Pkt. 10c; ¼ oz. 35c; ½ oz. 60c.

CLEOME (Spider Plant)—5 ft., showy, curious flower heads, crimson color, blooming until late fall. Pkt. 10c; ¼ oz. 25c.

COLEUS—12 in., large ornamental foliage, color combination green, red, and yellow. Pkt. 20c; ½ oz. 75c.



COSMOS, Orange Flare

COBAEA (Cathedral Bells)—Scandens—25 ft. Handsome, fast growing vine, bell shaped flowers, open green but turn lilac. Sow seed edgewise. Pkt. 10c; ¼ oz. 20c.

COLLINSIA—18 in. California annual, flowers belong to snapdragon family, tall spikes and requires little moisture. Pkt. 10c; ¼ oz. 35c.

COSMOS—Sensation New Giant Early—Blooms within ten weeks after seed is sown, flowers are abundant, long stemmed. Splendid for cut flowers, blooms until frost.

Pink, White, Mixed.

Any of the above: Pkt. 15c; ½ oz. 30c.

Orange Flare—Golden orange flowers, good for cutting, blooms until frost. Pkt. 10c; ½ oz. 25c.

Single Early Flowering Mammoth—4 ft.

White, Crimson, Rose, Mixed.

Any of the above: Pkt. 10c; ¼ oz. 15c.

Late Double Crested—2 weeks later than the early, double flowers of great beauty.

Crimson, Pink, White, Mixed.

Any of the above: Pkt. 15c; ¼ oz. 60c.

COXCOMB (see **Celosia**).

CYNOGLOSSUM (see **Chinese Forget-Me-Not**).

CYPRESS VINE—10 ft. Graceful quick growing annual climber, star shaped blossoms from mid-summer until frost. Soak seed in warm water.

Scarlet, White, Mixed.

Any of the above: Pkt. 10c; ¼ oz. 15c.

DAHLIA—Unwin's Dwarf Hybrids—2 ft.

Semi-double, pink, lavender, red, yellow and maroon shades, free flowering. Pkt. 15c; ½ oz. 50c.

Double Mixed—Pkt. 20c; ½ oz. 50c.

Double Cactus Mixed—Pkt. 20c; ½ oz. \$1.00.

Double Lilliput or Pompon Mixed—Pkt. 20c; ½ oz. \$2.00.

DIANTHUS or PINKS—Annual.

Chinensis, Double Mixed—Strong stemmed, free bloomers, very hardy, many brilliant colors. Pkt. 10c; ¼ oz. 30c.

Lucifer—Double orange-scarlet flowers.

Fireball—Double fiery-scarlet.

Mourning Cloak—Dark mahogany-red with white border. Double.

Snowball—Double white.

Any of the above: Pkt. 10c; ¼ oz. 45c.

Single Large Flowered

Splendens—Crimson, fringed petals.

Salmon Queen—Salmon scarlet.

Vesuvius—Orange-scarlet.

Mixed.

Any one of the above: Pkt. 10c; ¼ oz. 45c.

DIMORPHOTHECA (African Daisy)—Daisy-like blooms, lasts until late fall, good for edging and cutting. Easy to grow in sunny spot.

Aurantiaca Golden West—Bright golden yellow.

Aurantiaca Hybrids—Vary from white to red-orange, gold, salmon and rose.

Aurantiaca (Orange African Daisy)—Rich orange gold with dark center disc.

Aurantiaca White Beauty—Pure white.

Salmon Beauty—Salmon pink.

Any one of the above: Pkt. 10c; ¼ oz. 45c.

DOLICHOS (Hyacinth Bean)—10 ft., rapid grower, pea shaped flowers, followed by ornamental pods. Mixed. Pkt. 10c; oz. 25c.

ESCHOLTZIA (California Poppy)—State flower of California. Free blooming, low plant, finely cut foliage, flowering from early spring until frost.

Dwarf Erect.

RAMONA—Golden bronze.

The Geisha—Bright golden orange.

Above priced at: Pkt. 10c; ¼ oz. 30c.

Spreading Varieties.

Golden West—Bright yellow and orange. Pkt. 10c; ¼ oz. 20c.

FAIRWAY'S SPECIAL MIXED. Contains all varieties, extra fine. Pkt. 10c; ¼ oz. 25c; ½ oz. 40c.

EUPHORBIA — Heterophylla (Mexican Fire Plant)—Resembles poinsettia. About mid-summer leaves turn red. Pkt. 10c; ½ oz. 50c.

Variiegata (Snow-on-the-Mountain)—Bright, green leaves, veined and margined white. Pkt. 10c; ¼ oz. 20c; ½ oz. 35c.

FEVERFEW (Matricaria).

FORGET-ME-NOT (see *Myosotis*.)

FOUR O'CLOCKS (see *Marvel of Peru*.)

GAILLARDIA (Blanket Flower)—Are of the most dependable and best blooming flowers, brilliantly colored flowers.

SUNSHINE—Blend of red and gold.

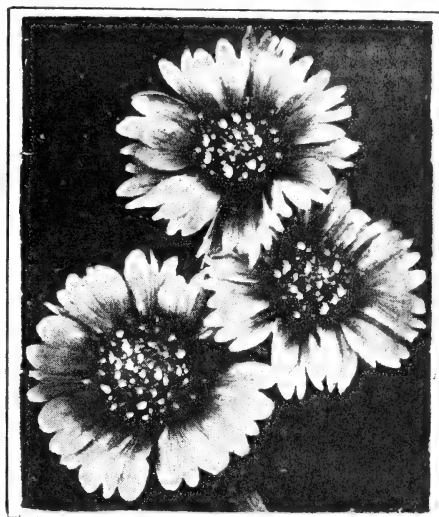
Indian Chief—Bronze red.

Red—Deep red shades.

Double Mixed.

Single Mixed.

Any of the above: Pkt. 10c; ¼ oz. 30c.



GAILLARDIA

GILIA—Phlox-like flowers, bushy plants about 18 in. high.

Capitata (Blue Thimble Flower)—Lavender-blue flowers. Can be used as everlasting flowers as they retain their color when dried.

Mixed.

Above: Pkt. 10c; ¼ oz. 20c.

GODETIA—Attractive annual. Blooms profusely, showy flowers, many rich and varied colors. Upright growing, about 18 in. high, single flowers.

White, Salmon-Orange, Salmon-Pink, Mixed. Above at: Pkt. 10c; ⅓ oz. 30c.

Compact Dwarf Growth, Single Flowered.

Dark Red, Rose, Rose with White Crimson, White, Mixed.

Any of the above: Pkt. 10c; ⅓ oz. 30c.

GOMPHRENA (Globe Amaranth)—Clover-like flowers. Annual everlasting. Mixed. Pkt. 10c; ¼ oz. 25c.

GOURDS—A giant collection that has never been equaled for shape, size and variety. Dried fruit may be used for many useful articles of decoration.

Mixed—Small and large fruited. Pkt. 10c; ½ oz 25c; oz. 40c.

Mixed—Small. Pkt. 10c; ½ oz. 25c; oz. 40c.

Mixed Warded—Late. Pkt. 10c; ½ oz. 25c; oz. 40c.

GYPSOPHILIA (Baby Breath)—Annual.

Charming misty, airy plants, fine for cutting.

Alba Grandiflora (Angel's Breath)—London Market Strain. Large flowering white. Several sowings should be made during the summer.

Elegan's Vivid Rose.

Mixed. Very choice collections of colors.

Any of the above: Pkt. 10c; ¼ oz. 20c.

HELICHRYSUMS (Annual Strawflower)—A garden ornament, and very highly prized for their usefulness as a dried flower for winter bouquets. Should be picked as a partial bud, hung head down in a cool place, for winter bouquet.

Crimson, Rose, Silvery-Pink, Golden-Yellow, Bright-Salmon, Purple, Mixed.
Any of the above: Pkt. 10c; ¼ oz. 25c.

HELIANTHUS (Annual Sunflower)—Large Flowered Tall.

Chrysanthemum Flowered Double—6 ft., golden yellow flowers. Pkt. 10c; ½ oz. 25c;

Miniature Cucumerifolius—4 to 5 ft., charming small flowers, golden yellow with black centers. Pkt. 10c; ½ oz. 25c.

Miniature Purpureus—Red and yellow tones. Pkt. 10c; ½ oz. 25c.

FAIRWAY'S SPECIAL MIXTURE. Pkt. 10c; ½ oz. 25c.

HELIOTROPE—Everybody's favorite, delightful fragrance, fine for bedding, also for house plant in winter.

King of the Blacks—Deep purple.

Mme. Bruant—Dwarf, violet-blue with white eye.

White Lady—Large flowering white.

Giant Mixed—Contains all choice varieties.

Any of the above: Pkt. 10c; ⅓ oz. 60c.

HETEROPAPPUS—Hispidus—2 ft. bushy plant. Aster-like flowers, silvery lavender blue with yellow eye. Pkt. 15c; ⅓ oz. 25c.

HUMULUS (Japanese Hop)—Rapid climber, luxuriant foliage, very dense. Makes a good covering for trellises, verandas and porches.

Green Leaved.

Variogated Leaved.

Above at: Pkt. 10c; ¼ oz. 20c.

HUNNEMANNIA (Santa Barbara Poppy)—Golden yellow, attractive in borders, 3 in. crisp shaped flowers on long stems. Pkt. 10c; ¼ oz. 20c.

ICE PLANT (see Mesembryanthemum).

KOCHIA (Burning Bush)—2½ ft. attractive bushes, green in summer, turning to blood red in fall, make a good hedge. Pkt. 10c; ½ oz. 25c.

LANTANA—Hybrids, Mixed—Verbena-like flowers, very showy blooms all summer. Pkt. 10c; ¼ oz. 40c.

LARKSPUR (Annual Improved)—One of the most desirable annuals. Early, rapid and quick growing, free bloomer and make good cutting flowers. Grow best in sunny location. Sow seed early.

Giant Imperial—3 to 4 ft. tall, double flowers, well formed, ideal for cut flowers.

Blue Spire—Deep blue.

Carmine King—Rich carmine on salmon.

White King—Pure white with long spikes.

Exquisite Pink—Soft pink shaded salmon.

FAIRWAY'S GIANT IMPERIAL MIXED. Contains the above and many others.

Any of the above: Pkt. 10c; ¼ oz. 50c.

Tall Branching, Double Stock Flowered.

Dark Blue, Pink, Carmine, Lilac, Rose, White, Mixed.

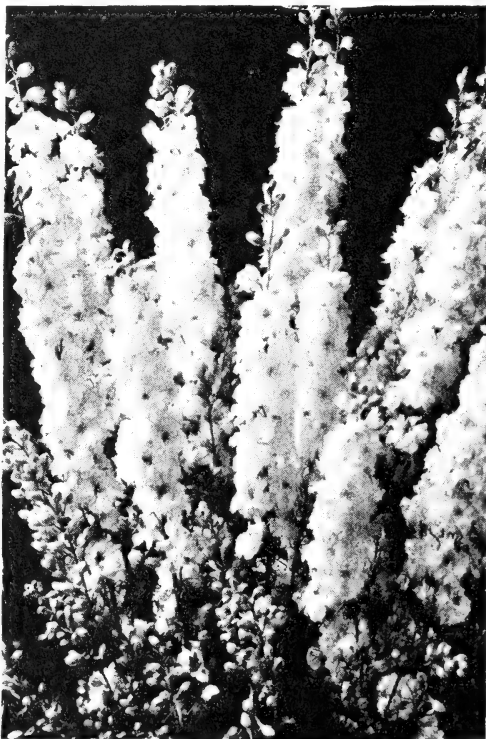
Any of the above: Pkt. 10c; ¼ oz. 35c.

LAVATERA (Annual Mallovs)—2½ ft., showy plants, covered with large, gay pink flowers, desirable for cutting and large borders. Pkt. 10c; ¼ oz. 30c.

LINARIA (Baby Snaps)—Hardy annual, small dainty flowers resembling snapdragons. Chamois, Snow White, Golden Gem, Mixed. Any of the above: Pkt. 10c; ¼ oz. 30c.

Fairy Bouquet—Dwarf, plant compact, many brilliant colors.

Mixed. Pkt. 15c; ⅓ oz. 25c.



LARKSPUR



MARIGOLD, Dixie Sunshine

LOBELIA—Beautiful for borders and rock gardens, plant compact and covered with flowers all summer.

Blue Stone—4 in., blue flower without eye. Pkt. 20c; 1/8 oz. 60c.

Crystal Palace—4 in., dark foliage, rich blue flower with eye. Pkt. 10c; 1/8 oz. 60c.

White Gem—6 in., showy white flowers. Pkt. 10c; 1/8 oz. 75c.

Mixed—Many varieties and shades. Pkt. 10c; 1/8 oz. 35c.

Trailing Varieties.

Hamburgia—Blue with white eye.

Sapphire—Deep blue with white eye.

Above: Pkt. 10c; 1/8 oz. 65c.

LUPINES—Annual. 2 ft., long graceful spikes, easy to grow.

Hartwegii Varieties.

Blue, Rose, White, Mixed.

Any of the above: Pkt. 10c; 1/2 oz. 30c; oz. 50c.

King or Giant Hartwegii. Blue, White, Mixed.

Any of the above: Pkt. 10c; 1/4 oz. 40c; 1/2 oz. 70c.

MARVEL OF PERU (Four O'Clocks)—2 ft. bushy plants, covered with flowers of many colors, very colorful when used as hedges. Red, White, Yellow, Lilac, Mixed.

Any of the above: Pkt. 10c; oz. 25c.

MARIGOLD—Add a brilliant touch of color to all summer gardens. Tall varieties being used as background because of their brilliant hued flowers and dark green foliage. Dwarf varieties used as border and edging plants.

Marigold, Golden Bedder—Dwarf Chrysanthemum-flowered. A very early variety and of uniform habit. Plants form symmetrical mounds, covered with golden orange flowers, a very distinct color. A row of outer guard petals is surmounted by a fully double crest of Dixie Sunshine type petals. Foliage is sparse and light green. A long stemmed variety good for cutting. Pkt. 15c.

African Tall Double—30 in.

All Double Orange, All Double Lemon, All Double Mixed.

Any of the above: Pkt. 10c; 1/8 oz. 30c; 1/4 oz. 50c.

SUNSHINE—Golden yellow.

Pkt. 10c; 1/8 oz. 30c; 1/4 oz. 55c.

Prince of Orange—Double quilled flowers of orange color.

Lemon Queen—Same as Orange Queen only flowers lemon color.

Any of the above: Pkt. 10c; 1/4 oz. 50c; 1/2 oz. 90c.

Fairway's Selected Giant Mixed. Pkt. 10c; 1/4 oz. 50c; 1/2 oz. 90c.

Mexican Dwarf (Signata Pumila)—10 in., fine for edgings.

Lemon, Orange, Mixed.

Any of the above: Pkt. 10c; 1/4 oz. 30c; 1/2 oz. 55c.

French Dwarf Double—10 in., ball shaped and compact, many brilliant colors.

Dark Brown, Gold Striped, Lemon, Orange.

Robert Beist—Mahogany-Red.

Yellow with Brown Margin.

Harmony—Centers golden orange, outer petals reddish brown.

Fairway's Special Mixed.

Any of the above: Pkt. 10c; 1/4 oz. 30c; 1/2 oz. 50c.

Carnation Flowered.

Guinea Gold—Carnation-like flowers of brilliant gold. Pkt. 10c; 1/4 oz. 25c; 1/2 oz. 45c. Odorless.

Crown of Gold—Collarette flowers of brilliant orange, center short quilled petals. Pkt. 10c; 1/8 oz. 20c; 1/4 oz. 35c.

Burpee Gold—Large flowered, deep orange color. Pkt. 15c; 1/8 oz. 30c; 1/4 oz. 50c.

Royal Crown—Same as Crown of Gold except the color is yellow. Pkt. 20c; 1/8 oz. 25c.

MATTHIOLA (Evening Scented Stock)—Bicornis—Lilac flowers scented in morning and evening or after showers. Pkt. 10c; 1/4 oz. 15c; 1/2 oz. 25c.

MATRICARIA (Feverfew)—Decorative in borders or beds, fine for cutting.

Golden Ball—Golden yellow. 8 in.

Lemon Ball—Lemon yellow. 8 in.

Snowball—Pure white. 10 in.

Any of the above: Pkt. 10c; $\frac{1}{8}$ oz. 35c.

Double White—White blooms. 2 ft. Pkt. 10c; $\frac{1}{8}$ oz. 20c.

MESEMBRYANTHEMUM (Ice Plant)—Tricolor—6 in. high, daisy-like flowers, carmine, purple, white and with dark centers, fine for rock gardens. Pkt. 10c; $\frac{1}{8}$ oz. 30c; $\frac{1}{4}$ oz. 50c.

MIGNONETTE—1 ft., excellent for cutting and fragrance.

Goliath—Large red flowers, one of the best. Pkt. 10c; $\frac{1}{4}$ oz. 30c; $\frac{1}{2}$ oz. 60c.

Giant Machet—Large red spikes, dark foliage. Pkt. 10c; $\frac{1}{4}$ oz. 20c; $\frac{1}{2}$ oz. 35c.

Golden Goliath—Golden yellow flowers. Pkt. 15c; $\frac{1}{4}$ oz. 45c; $\frac{1}{2}$ oz. 75c.

Mixed—Pkt. 10c; $\frac{1}{4}$ oz. 25c; $\frac{1}{2}$ oz. 40c.

MOONFLOWER (Night Blooming)—Quick climber, foliage thick and heavy. Giant Pink, Giant White. Pkt. 10c; $\frac{1}{2}$ oz. 25c; oz. 45c.

MORNING GLORY (Convolvulus)—Quick climbing vine, free bloomer and very vigorous grower.

Crimson Rambler—Large ruby red flowers with white throat, good climber. Very attractive when planted with Heavenly Blue. Pkt. 10c; $\frac{1}{4}$ oz. 35c; $\frac{1}{2}$ oz. 60c.

Scarlett O'Hara—Large red flowers produced during summer and fall. Pkt. 10c; $\frac{1}{8}$ oz. 20c; $\frac{1}{4}$ oz. 35c.

Heavenly Blue—Large sky-blue flowers, very attractive. Pkt. 10c; $\frac{1}{4}$ oz. 30c; $\frac{1}{2}$ oz. 50c.

Japanese Mixed—Large flowering, unusual color combinations and markings. Pkt. 10c; $\frac{1}{2}$ oz. 20c; oz. 30c.

MYOSOTIS (Forget-Me-Not)—Alpestris varieties bloom in early spring, require a well drained sunny spot. Other varieties bloom from May until frost, flourish in moist and half shady places. Rock gardens and borders.

Blue Bird—Deep blue flowers. Pkt. 10c; $\frac{1}{8}$ oz. 45c; $\frac{1}{8}$ oz. 80c.

Palustris—Large spray of light blue flowers. Pkt. 10c; $\frac{1}{8}$ oz. 80c.

Alpestris Varieties.

Blue, Rose, White.

Any of the above: Pkt. 10c; $\frac{1}{8}$ oz. 60c.

Blue Basket—Deepest blue. Pkt. 15c; $\frac{1}{8}$ oz. 50c; $\frac{1}{8}$ oz. 85c.

Indigo Blue or Royal Blue—Rich blue. Pkt. 10c; $\frac{1}{8}$ oz. 50c.

Mixed. Pkt. 10c; $\frac{1}{4}$ oz. 55c.

NASTURTIUMS—Dwarf or Bush Type—Double.

Scarlet Globe—Double and semi-double fragrant scarlet flowers. Pkt. 10c; oz. 30c; 4 oz. \$1.00.

Golden Globe—Double and semi-double fragrant yellow flowers. Pkt. 10c; oz. 20c; 4 oz. 60c.

Orange Glory—Brilliant orange-chrom in color. Pkt. 10c; oz. 35c; 4 oz. \$1.00.

Mahogany Gem—Deep mahogany in color. Plants compact. Pkt. 10c; oz. 35c; 4 oz. \$1.00.

Dwarf or Bush Type—Single.

Pearl—Yellow.

Beauty—Orange.

King Theodore—Crimson, dark green foliage. Any of the above: Pkt. 10c; oz. 20c; 4 oz. 50c.

Mixed Dwarf—Single and Double. Pkt. 10c; oz. 20c; 4 oz. 50c.

Giant Double Semi-Tall, Gleam Type.

Golden Gleam—Golden yellow, scented, long stems.

Scarlet Gleam—Rich orange, long stemmed.

Mixed.

Any of the above: Pkt. 10c; oz. 20c; 4 oz. 50c.

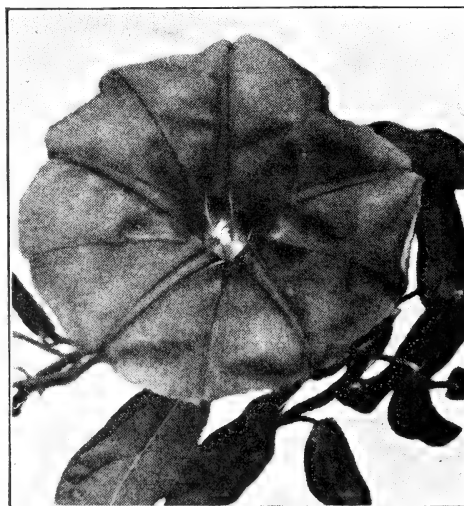
Tall or Creeping—Single.

Sunlight—Golden yellow.

Spitfire—Scarlet-red.

Mixed.

Any of the above: Pkt. 10c; oz. 20c; 4 oz. 50c.



MORNING GLORY

NEMESIA—Dwarf, 8 in. high, free blooming, for rock gardens and edgings.

White Queen—Pure white. Pkt. 15c; $\frac{1}{8}$ oz. 40c; $\frac{1}{8}$ oz. 75c.

Large Flowering Hybrids—Pink, crimson, yellow, white and blue, in mixture.

Pkt. 10c; $\frac{1}{8}$ oz. 40c; $\frac{1}{4}$ oz. 70c.

NEMOPHILA (Baby Eyes)—Quick grower, sky-blue flowers, for edgings and rock gardens. Pkt. 10c; $\frac{1}{4}$ oz. 20c; $\frac{1}{2}$ oz. 35c.

NICOTIANA (Flowering Tobacco Plant)—Long petunia-like flowers, fragrant, free and continuous bloomer.

Affinis Hybrids—Brilliant colors, fragrant.

Affinis—Pure white, bushy, upright plants. 2 $\frac{1}{2}$ ft.

Sylvestris—Large clusters, long white blooms. 4 ft.

Any of the above: Pkt. 10c; $\frac{1}{4}$ oz. 25c; $\frac{1}{2}$ oz. 40c.

NIGELLA—18 in. high, attractive feathery leaved with pretty, large semi-double cornflower-like blooms.

Blue, White, Mixed.

Any of the above: Pkt. 10c; $\frac{1}{4}$ oz. 15c; $\frac{1}{2}$ oz. 25c.

OENOTHERA—Evening Primrose—2 ft., large yellow poppy-like flowers, opening in evening, last until morning, July to October. Pkt. 10c; $\frac{1}{4}$ oz. 20c; $\frac{1}{2}$ oz. 35c.

PANSY—Giant. Improved Swiss or Roggli Hybrids. Plants strong, flowers large, perfectly round and freely borne.

Alpenglow—Rich Indian-red blooms, dark blotch on three lower petals.

Swiss Blue, Swiss Violet, Swiss Yellow, Swiss White, Fairway's Swiss Mixed.

Any of the above: Pkt. 20c; $\frac{1}{8}$ oz. 85c; $\frac{1}{8}$ oz. \$1.50.

Mastodon Giants, Mixed—Heavily ruffled, ranging from white to mahogany, free blooming. Pkt. 25c; $\frac{3}{8}$ oz. 60c; $\frac{1}{8}$ oz. \$1.00; $\frac{1}{8}$ oz. \$1.50.

Trimardeau or Giant Bedding, Mixed—Plants compact, free blooming and very hardy. Flowers large on stiff, long stems. Pkt. 10c; $\frac{1}{8}$ oz. 60c; $\frac{1}{4}$ oz. \$1.00; oz. \$3.25.

PETUNIAS—Large Flowered or Balcony—15 in. free blooming, used for window boxes, borders and edgings.

Balcony Blue, Balcony White, Balcony Red, Balcony Violet, Balcony Crimson, Balcony Pink, Balcony Mixed.

Any of the above: Pkt. 15c; $\frac{3}{8}$ oz. 30c; $\frac{1}{8}$ oz. 50c; $\frac{1}{8}$ oz. 85c.

Spreading Bedding Petunias.

Blue, Violet, Pink, Crimson, White, Red.

Fairway's Special Mixture.

Any of the above: Pkt. 10c; $\frac{1}{8}$ oz. 40c; $\frac{1}{4}$ oz. 70c.

Petunia, Cream Star—Hybrida Nana Compacta variety, free bloomer, very distinct. Blooms soft, creamy white, bluntly star-shaped, with a star of cream coloring on the white flowers. Pkt. 25.



PETUNIA "CREAM STAR"

Dwarf Bedding Petunias.

Alderman—Violet Blue.

Rose of Heaven—Rose.

Snow Ball—White.

Rosy Morn—Pink.

Viola—Deep violet.

Crimson.

Mixed.

Any of the above: Pkt. 10c; $\frac{1}{8}$ oz. 25c; $\frac{1}{8}$ oz. 40c; $\frac{1}{4}$ oz. 70c.

Dwarf California Giants.

Fairway's Choice Mixed. Pkt. 20c; $\frac{1}{128}$ oz. 60c; $\frac{1}{4}$ oz. \$1.00.

Giant Ruffled—Unsurpassed for border, bedding and cutting, large flowers, bloom until frost.

Fairway's Finest Mixed. Pkt. 20c; $\frac{1}{128}$ oz. 90c; $\frac{1}{4}$ oz. \$1.65.

Giant Fringed.

Fairway's Choice Mixed. Pkt. 20c; $\frac{1}{128}$ oz. 60c; $\frac{1}{4}$ oz. \$1.00.

PHACELIA—Campanularia—Sow where they are to grow, produce beautiful blue flowers, effective for edgings and rock gardens. Pkt. 10c; 1/8 oz. 20c; 1/4 oz. 35c.

PHLOX—Annual—Grandiflora Varieties—12 in., large flowered, plants bear large clusters of bright colored blooms the entire summer.

Chamois Rose, Maroon, Pink, Scarlet, Scarlet with White Eye, Violet, White, Yellow, Mixed.

Any of the above: Pkt. 10c; 1/8 oz. 55c; 1/4 oz. \$1.00.

Nana Compacta Dwarf—Very showy in beds and borders, bushes compact and dwarf. Height 6 in.

Red, Yellow, Rose with White Eye, Pink, Violet, White, Mixed.

Any of the above: Pkt. 10c; 1/8 oz. 60c; 1/4 oz. \$1.10.

PORTULACA (Moss Rose)—Small flower like roses. Double and single in following colors: Pink, Red, White, Yellow. Single Mixed, Double Mixed.

Double Varieties—Pkt. 10c; 1/8 oz. 45c; 1/8 oz. 85c; 1/4 oz. \$1.50.

Single Varieties—Pkt. 10c; 1/8 oz. 30c; 1/8 oz. 50c; 1/4 oz. 85c.

POPPY (Annual)—Give charming color in a garden with their brilliant contrasting colors. Easy to grow, sow early where they are to be grown.

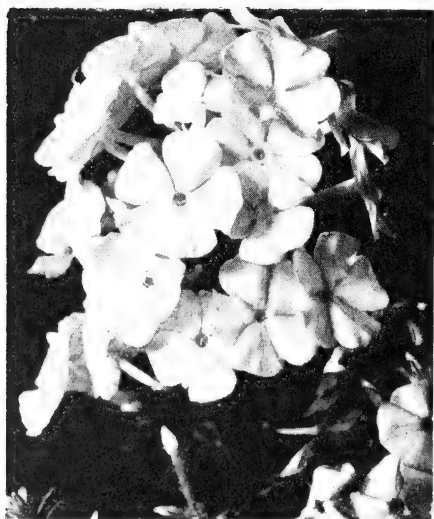
American Legion—Single, orange scarlet.

Peony Flowered—Double Mixed.

Improved Shirley—Single Mixed.

Any of the above: Pkt. 10c; 1/4 oz. 15c; 1/2 oz. 25c.

CALIFORNIA POPPY—see **Escholtzia**.



PHLOX

RHODANTHE (Swan River Everlasting)—Straw-like flowers in shades of white, pink and red. Used fresh in summer or may be dried for winter.

Single Mixed. Pkt. 10c; 1/4 oz. 35c; 1/2 oz. 60c.

RICINUS (Castor Bean)—10 ft., ornamental foliage, large leaved, strong grower.

Zanzibariensis Mixed. Pkt. 10c; oz. 20c.

RUDBECKIA (Black Eyed Susan)—Annual. Daisy-like flowers easily grown, excellent garden display.

Kelvedon Star—Yellow with brown border.

My Joy—Large flowers, long orange yellow petals with dark center cone.

Any of the above: Pkt. 10c; 1/8 oz. 30c; 1/4 oz. 50c.

SALPIGLOSSIS—2 1/2 ft. Trumpet-shaped flowers of many shades with gold veins, sow in full sun, will flower from July to frost.

Blue and Gold, White and Gold, Velvety Red, Scarlet and Gold, Special Mixed.

Any of the above: Pkt. 10c; 1/8 oz. 20c; 1/4 oz. 35c.

SALVIA (Scarlet Sage)—Brilliant bedding plant. Seed must be started early indoors in a warm sunny location.

American or Globe of Fire—1 1/2 ft., bushy plants covered with spikes of brilliant scarlet flowers. Pkt. 20c; 1/8 oz. \$1.00; 1/4 oz. \$1.75.

Clara Bedman or Bonfire—2 1/2 ft., spikes stand above foliage, very showy. Pkt. 15c; 1/8 oz. 70c; 1/4 oz. \$1.25.

Crimson Splendens—3 ft., large flowering, tall growing, brilliantly colored. Pkt. 10c; 1/8 oz. 55c; 1/4 oz. \$1.00.

Blue Bedder—2 1/2 ft., deep blue flowers, very ornamental. Pkt. 10c; 1/8 oz. 60c; 1/4 oz. \$1.00.

SCABIOSA—2 1/2 ft. Known as pincushion flower or Morning Bride. Long stemmed flowers from mid-summer to frost if picked and not allowed to seed.

Blue, Red, White, Rose Pink, Scarlet.

Any of the above: Pkt. 10c; 1/4 oz. 25c; 1/2 oz. 40c.

Loveliness—Fragrant and glorious salmon rose color. Pkt. 10c; 1/4 oz. 25c; 1/2 oz. 40c.

Rosette—Extra large flowers, deep rose with salmon. Pkt. 10c; 1/8 oz. 25c; 1/4 oz. 45c.

Blue Moon—Novelty, 4 ft., large blossoms, conical shape, sky blue tinged with lavender. Pkt. 15c.

Fairway's Special Mixture. Pkt. 10c; 1/4 oz. 35c; 1/2 oz. 60c.

SCHIZANTHUS (Butterfly Flower)—Very dainty, seeds germinate rapidly, blossoms in a few weeks.

Giant Hybrids—2 ft., large blooms, many colors. Pkt. 20c; 1/8 oz. 50c; 1/8 oz. 90c.

Wisetonensis—Many colors and markings. Pkt. 10c; 1/8 oz. 20c; 1/4 oz. 35c.

SWEET PEA—Plant early in rich soil and give plenty of water on warm days, tie up when 5 in. in height, giving plenty of space.

Early Flowering Spencer.

American Beauty—Crimson rose.

Annie Laurie—Rose pink.

Blue Bird—Violet blue.

Ball's Rose—Rose pink.

Blue Boy—Clear blue.

Bridesmaid—Silvery Pink.

Grenadier—Scarlet.

Harmony—Lavender.

Mariner—Marine Blue.

Mrs. Calvin Coolidge—Pink.

Oriental—Cream.

Red Bird—Crimson Red.

Shirley Temple—Pink.

Snowstorm—White.

Sunray—Cerise on cream.

Vulcan—Scarlet.

White Harmony—White.

Late Flowering.

Ambition—Lavender.

Ascot—Pink.

Barbara—Salmon.

Bridal Veil—White.

Capri—Blue.

Charming—Rose-cerise.

Fiancee—Salmon Pink.

Gigantic—White.

Grand Slam—Scarlet Cerise.

Headlight—Orange Scarlet.

Lady Ruffles—Light pink.

Loveliness—Rich pink.

Mary Pickford—Salmon.

Miss California—Orange-salmon.

Olympia—Purple.

Pinkie—Rose pink.

Powerscourt—Lavender.

Red Boy—Crimson.

Stylist—Rose pink.

Youth—Pink edged white.

Any of the above: Pkt. 10c; 1/2 oz. 40c; oz. 60c; 4 oz. \$1.50.

Fairway's Special Early Mixture.

Fairway's Special Late Mixture.

Any of the above: Pkt. 10c; 1/2 oz. 30c; oz. 50c; 4 oz. \$1.25.

STATICE—Graceful sprays, either in garden or dried for winter bouquet.

Bonueli Imp.—Yellow clusters. Pkt. 10c,

Superba—Rose pink.

Pkt. 15c; 1/8 oz. 25c;

1/4 oz. 40c.

Puberula—Dark violet. Pkt. 10c; 1/8 oz. 50c;

1/4 oz. 85c.

Sinuata Varieties.

Blue, Lavender, Rose, White, Mixed.

Any one of the above: Pkt. 10c; 1/8 oz. 15c;

1/4 oz. 25c.



SWEET PEA, Spring Flowering

STOCKS—Heavy spikes of fine, double, fragrant flowers, in a wide range of colors. Start seed indoors early. Flowers look like small rosettes.

Double Dwarf—10 weeks, 15 in.

Blue, Purple, White, Pink, Red, Yellow, Mixed.

Any of the above: Pkt. 10c; 1/8 oz. 45c; 1/4 oz. 80c.

Giant Imperial—2 ft.

Blue, Purple, Rose, Yellow, Pink, White, Mixed.

Any of the above: Pkt. 10c; 1/8 oz. 70c; 1/4 oz. \$1.10.

Beauty or Nice—Mixed colors taking longer to bloom but very beautiful and heavy scented. Pkt. 15c; 1/8 oz. 45c; 1/4 oz. 75c.

TITHONIA (Mexican Sunflower)—6 ft. plants, dark foliage, orange-scarlet single Dahlia-like flowers. Pkt. 10c; $\frac{1}{8}$ oz. 30c; $\frac{1}{4}$ oz. 50c.

TORENIA—1 ft., snapdragon-like flowers, richly colored. Bushy plants for use in borders and beds.

Fournieri—Light blue, yellow throat.

White Wings—White with rose tint.

Any of the above: Pkt. 10c; $\frac{1}{8}$ oz. 35c; $\frac{1}{8}$ oz. 60c.

Baillonii—Yellow with brown markings.

Pkt. 20c; $\frac{1}{8}$ oz. \$2.00.

VENIDIUM (Calendulaceum)—14 in., bushy plant with large orange daisy-like flowers, fine grey silvery foliage. Pkt. 10c; $\frac{1}{8}$ oz. 40c; $\frac{1}{4}$ oz. 70c.

Fastuosum Hybrids—2½ ft., new variety with wide range of colors. Pkt. 20c; $\frac{1}{8}$ oz. 60c; $\frac{1}{8}$ oz. \$1.00



VERBENA

VERBENA—Colorful dwarf plants, flowering from mid-summer until frost.

Large Flowered, Spreading Growth, 10 in.

Appleblossom—Pink.

Etna—Red with creamy eye.

Lavender Glory—Lavender with white eye.

Luminosa—Pink shading to salmon.

Royal—Blue with yellow eye.

Scarlet—Bright scarlet.

White—Pure white.

Special Mixed.

Any of the above: Pkt. 10c; $\frac{1}{8}$ oz. 40c; $\frac{1}{4}$ oz. 75c.

Hybrida Sorts.

Blue Shades.

Defiance—Intense scarlet.

Helen Willmott—Rose salmon white eye.

Lueta—Yellow.

Mayflower—Pink.

Special Mixed.

Any of the above: Pkt. 10c; $\frac{1}{8}$ oz. 25c; $\frac{1}{4}$ oz. 40c.

Dwarf.

Blue—With white eye.

Chamois—Pale chamois.

Dark Blue.

Pink.

Splendor—Scarlet with white eye.

Fireball—Bright scarlet.

White—Creamy white.

Venus—Creamy salmon.

Special Mixed.

Any of the above: Pkt. 15c; $\frac{1}{8}$ oz. 60c; $\frac{1}{4}$ oz. \$1.10.

VINCA ROSEA (Periwinkle)—Erect free blooming plants, dark foliage, pink and white flowers, attractive for beds and borders.

White, Pink, Soft-Pink, White with Eye, Mixed.

Any of the above: Pkt. 10c; $\frac{1}{8}$ oz. 20c; $\frac{1}{4}$ oz. 35c.

VISCARIA—Showy, free blooming plants, with red, white and blue, single, wild rose-like flowers.

Rose Beauty—18 in., flowers of deep rose, with fringed petals. Erect habit.

Blue Bouquet—12 in. large blue flowers.

Any of the above: Pkt. 10c; $\frac{1}{8}$ oz. 45c; $\frac{1}{4}$ oz. 80c.

WALLFLOWER—Sweet scented, oriental coloring of rich reds and yellows.

Double Tall Branching Mixed—Pkt. 10c; $\frac{1}{8}$ oz. 80c; $\frac{1}{4}$ oz. \$1.50.

WILD CUCUMBER VINE—Quick grower, covered with white scented flowers, followed with prickly seed pods. Pkt. 10c; $\frac{1}{2}$ oz. 15c; oz. 25c.

XERANTHEMUM (Everlasting)—Silvery foliage and silky flowers of pink, white and purple.

Double Mixed.

Pkt. 10c; $\frac{1}{4}$ oz. 25c; $\frac{1}{2}$ oz. 40c.

ZINNIAS—Dahlia Flowered—Large broad petals, long stems, flowers resemble Dahlias in form.

Luminosa—Deep pink.

Dream—Lavender.

Scarlet Flame—Bright scarlet.

Golden Dawn—Golden yellow.

Oriole—Orange and gold.

Polar Bear—White.

Fairway's Special Mixture.

Any of the above: Pkt. 10c; 1/8 oz. 25c; 1/4 oz. 45c; 1/2 oz. 75c.

Zinnia, Royal Purple—Dahlia-flowered. This Dahlia-flowered Zinnia is of a deep rich Royal Purple color without blue toning. Its uniformity in plant habit, large flowers, color and height, makes it a very attractive addition to your garden. Flowers are usually 4 inches across, fully double, and plants grow about 3 feet high. Pkt. 15c.

California Giants—Immense double flowers, vigorous growing, giant branching plants, 2 1/2 ft. tall. Ideal for cutting.

Brightness—Deep rose.

Cerise Queen—Cerise rose.

Enchantress—Light rose pink.

Grenadier—Dark red.

Miss Willmott—Soft pink.

Orange King—Deep orange.

Purity—Pure white.

Scarlet Queen—Glowing scarlet.

Violet Queen—Violet.

Fairway's Special Mixture.

Any of the above: Pkt. 10c; 1/8 oz. 25c; 1/4 oz. 45c; 1/2 oz. 75c.

Colossal or Giant Mammoth

Blood Red	Lavender	Pink
Burnt Orange	Orange	Violet
Crimson	Royal Purple	White
Golden Yellow	Salmon Rose	

Fairway's Special Mixture

Any of the above: Pkt. 10c; 1/4 oz. 30c; 1/2 oz. 50c; oz. 75.

Fantasy—Flowers are a mass of twisted, tubular petals, giving a shaggy appearance.

Star Dust—Deep yellow, good for cutting, very outstanding.

Fairway's Special Mixture

Any of the above: Pkt. 10c; 1/8 oz. 25c; 1/4 oz. 40c; 1/2 oz. 60c.

Scabiosa Flowered—Differs from other Zinnias, double crested outer petals are broad with center crown petals quill like, as on scabiosa.

Mixed—Pkt. 10c; 1/8 oz. 25c; 1/4 oz. 45c; 1/2 oz. 80c.

Lilliput or Pompon—Plants small and bushy, short stemmed, double flowers, very pretty, blooms all summer. Pink, Crimson, Lilac, Orange, Rose, Scarlet, White, Purple.

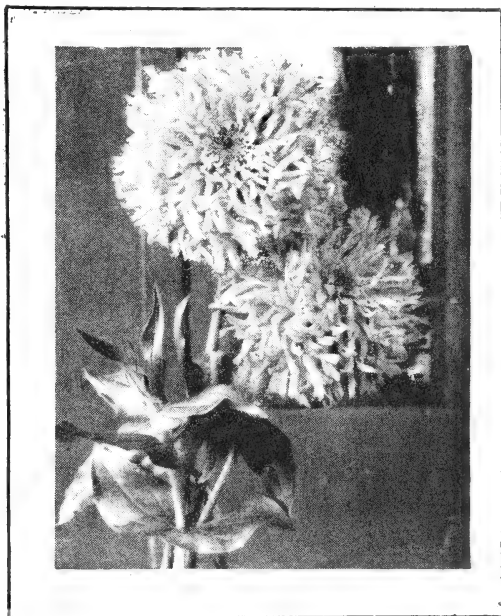
Fairway's Special Mixture.

Any of the above: Pkt. 10c; 1/4 oz. 25c; 1/2 oz. 45c; oz. 75c.

Fumila Double—18 in. (Cut and Come Again) —Bushy plants, double flowered, stout stems, also fine cut flowers.

Snowball	Fire Ball
Golden Ball	Pinkie
Watermelon Pink	Mixed

Any of the above: Pkt. 10c; 1/4 oz. 20c; 1/2 oz. 35c; oz. 60c.



ZINNIA, Fantasy

Mexicana or Miniature—Small flowers of orange, yellow and mahogany. Double and semi-double. Mixed. Pkt. 10c; 1/8 oz. 25c; 1/4 oz. 45c; 1/2 oz. 75c.

Navajo or Midget—Bushy plants, flowers medium size, single, double and semi-double. Its long narrow petals of lilac, lavender, crimson, pink, and orange shades with bi-color effect. **Mixed.** Pkt. 15c; 1/8 oz. 30c; 1/4 oz. 50c; 1/2 oz. 75c.

Linearis—Midget plant, 10 in., covered all summer with orange yellow, single flowers with yellow stripe. Pkt. 10c; 1/8 oz. 40c; 1/4 oz. 65c.

Red Riding Hood—The smallest of the midgets, compact bush, double scarlet flowers, very good for edgings and cutting. Pkt. 10c; 1/8 oz. 20c; 1/4 oz. 30c.

FAIRWAY GARDENS TESTED PERENNIAL FLOWER SEEDS

A Perpetual Garden

ACHILLEA—2 ft. Small white clusters of flowers, from June to September. Plant in a sunny well drained place. Fine for border or rock garden; also cutting.

The Pearl—Pkt. 10c; $\frac{1}{8}$ oz. 35c; $\frac{1}{8}$ oz. 60c.

ALYSSUM—Showy dwarf, free flowering, for rock garden or border edging.

Saxatile Compactum—9 in. Bright golden yellow flowers, early. Pkt. 10c; $\frac{1}{4}$ oz. 30c; $\frac{1}{2}$ oz. 50c

Saxatile Sulphureum—12 in. Pale yellow flowers, early. Pkt. 10c; $\frac{1}{8}$ oz. 35c; $\frac{1}{4}$ oz. 65c.

ARABIS (Rock Cress)—10 in. Dwarf, showy and early pure white flowers.

Alpina—1 ft. Pure white. Pkt. 10c; $\frac{1}{4}$ oz. 40c; $\frac{1}{2}$ oz. 70c.

ANCHUSA—Blue Forget-me-not like flowers, June and July.

Italiana Dropmore—Rich blue. Pkt. 10c; $\frac{1}{4}$ oz. 20c; $\frac{1}{2}$ oz. 35c.

Dwarf Dropmore—1 ft. Bright blue. Pkt. 20c; $\frac{1}{8}$ oz. 75c.

AUBRIETIA—6 in. Large flowering hybrids, dwarf spreading plant for borders and rock garden, masses of blue, purple and lilac colors, April and May. Pkt. 15c; $\frac{1}{8}$ oz. 75c; $\frac{1}{4}$ oz. \$1.25.

ASTERS, HARDY—Popular and easy to grow, masses of flowers for cutting.

Alpine Mixed—8 in. Blue and white flowers. Pkt. 15c; $\frac{1}{8}$ oz. 35c.

Amellus Hybrids—2½ ft. Large flowers of many colors. Mixed. Pkt. 20c; $\frac{1}{8}$ oz. 50c.

BOLTONIA—4 ft. A showy plant, covered with pinkish-lavender small star flowers from August to October. Good for cutting and easy to grow. Pkt. 10c; $\frac{1}{8}$ oz. 30c; $\frac{1}{8}$ oz. 50c.

CENTAUREA—Hardy Corn Flower.

Montana 2 ft., large blue flower, thistle-like blooms from June to September. Pkt. 10c; $\frac{1}{4}$ oz. 50c.

Macrocephala—3 ft., large yellow, thistle-like blooms from July and August. Pkt. 10c; $\frac{1}{8}$ oz. 25c.



CAMPANULA MEDIA

CAMPANULA—Canterbury Bells—This beautiful biennial and perennial plant very popular, easy to grow.

Cup and Saucer—Biennial, 2 ft., bushy plant covered with flowers which are cup and saucer shaped.

Dark Blue, Light Blue, Rose White. Mixed. Any of the above: Pkt. 10c; $\frac{1}{8}$ oz. 35c; $\frac{1}{4}$ oz. 60c.

Double Canterbury Bells—2 ft. double flowers, white, blue and rose. Pkt. 10c; $\frac{1}{8}$ oz. 20c; $\frac{1}{4}$ oz. 35c.

Single Canterbury Bells—2 ft., Biennial, Flowers of white, blue and rose. Pkt. 10c; $\frac{1}{8}$ oz. 15c; $\frac{1}{4}$ oz. 25c.

Carpatica—10 in., cup shaped clear blue blooms, splendid for edging. Pkt. 10c; $\frac{1}{8}$ oz. 55c; $\frac{1}{4}$ oz. \$1.00.

Lactiflora—Perennial, 3 ft., showy plant, large bells blue in color. Pkt. 10c; $\frac{1}{8}$ oz. 50c; $\frac{1}{4}$ oz. 85c.

Persicifolia, Mixed—Perennial, 2 ft., blue, white and peach bells. Pkt. 10c; $\frac{1}{8}$ oz. 50c; $\frac{1}{4}$ oz. 85c.

Perennial Varieties, Mixed.—Pkt. 15c; $\frac{1}{8}$ oz. 50c; $\frac{1}{4}$ oz. 90c.

CHINESE LANTERN—*Physalis Franchetii*—2 ft., large orange red lantern shaped fruit, when cut and dried make a colorful winter bouquet. Pkt. 10c; $\frac{1}{4}$ oz. 30c.

CHRYSANTHEMUM—Hardy, fall flowering, will bloom first year, very showy.

Fairway's Early Flowering Double Chinese—Pkt. 25; $\frac{1}{8}$ oz. \$1.00; $\frac{1}{8}$ oz. \$1.75.

Fairway's Early Flowering Single Chinese—2 ft. Pkt. 20c; $\frac{1}{8}$ oz. \$1.00; $\frac{1}{8}$ oz. \$1.75.

Mawii—1 ft., rich pink flowers, silvery foliage, fine for rock gardens. Pkt. 20c; $\frac{1}{8}$ oz. 60c; $\frac{1}{8}$ oz. \$1.00.

COREOPSIS—2½ ft., popular garden flower, fine for cutting, blooms all summer.

Lanceolata Grandiflora—2 ft., long stemmed daisy like flowers, blooms all summer, good for cutting. Pkt. 10c; $\frac{1}{4}$ oz. 20c; $\frac{1}{2}$ oz. 35c.

Double Flowering Grandiflora—Double and semi-double graceful stemmed orange yellow flowers, bloom first year if sown early. Pkt. 15c; $\frac{1}{4}$ oz. 30c; $\frac{1}{2}$ oz. 50c.

Grandiflora Double Sunburst—Brilliant golden yellow, flowers are double, $\frac{1}{2}$ in. across, excellent for cutting, very attractive. Pkt. 15c; $\frac{1}{8}$ oz. 30c; $\frac{1}{4}$ oz. 50c.

CARNATION—Hardy Pinks—A universally known and grown flower. Excellent for cutting, beds, borders and rockery. Easy to grow and if seed is sown early will bloom the first year.

Chabaud's Giant—18 in. Cardinal Red, Flesh Pink, Yellow, White, Maroon, Copper Red, Deep Rose, Salmon Pink.

Any of the above: Pkt. 15c; $\frac{1}{8}$ oz. 70c; $\frac{1}{4}$ oz. \$1.25.

Fairway's Choice Mixture—Pkt. 10c; $\frac{1}{8}$ oz. 65c; $\frac{1}{4}$ oz. \$1.10.

Grenadin—1 ft., used for bedding, double flowered. Bloom first year if sown early. Dark Velvety Brown. Double Red. White.

Fairway's Special Mixed.
Any of the above: Pkt. 15c; $\frac{1}{8}$ oz. 70c; $\frac{1}{4}$ oz. \$1.25.

Dwarf Red—Specially used for rockery. Pkt. 15c; $\frac{1}{8}$ oz. 70c; $\frac{1}{4}$ oz. \$1.25.

Early Dwarf Vienna—14 in., large double flowers. Early.

Special Mixed. Pkt. 10c; $\frac{1}{8}$ oz. 35c; $\frac{1}{4}$ oz. 65c.

Enfant de Nice—Large flowered, long stemmed, similar to Chabaud's Giants.

Salmon, Red, White, Rose.
Any of the above: Pkt. 20c; $\frac{1}{8}$ oz. 75c; $\frac{1}{8}$ oz. \$1.25.

Special Mixed. Pkt. 15c; $\frac{1}{8}$ oz. 60c; $\frac{1}{8}$ oz. \$1.00.

COLUMBINES—Aquilegia—2½ ft., dainty and graceful plants, bloom early, flowers on long spike-like stems. Wonderful variety of color, prefer partial shade.

A sensation for your spring garden. This beautiful flower is just coming into its own. Everyone, everywhere, is just realizing that the Columbine adds that dash of color so necessary in spring to the home garden. Carrying its beautiful flowers of many colors and hues, on long stems that are thrown profusely from the base of the plant, it is very attractive and outstanding. A very valuable addition to all gardens.

Crimson Star—A new standout, long spurred variety. The long spurs are a rich crimson and the center white tinged carmine. Flowers 3 inches across with 2 ft. stems. Highly recommended and quite true from seed. Pkt. 25c.

Longissima Hybrids—Very outstanding, a cross between Longissima and Mrs. Scott Elliott's Hybrids. It produces flowers of many hues and colors with spurs nearly as long, but broader, than the Longissima. Very hardy, and invaluable for their color effect in borders and as cut flowers. Pkt. 50c.

Dobbie's Imperial Hybrids—A good strain, producing flowers of many brilliant colors, of the long spurred variety. Pkt. 25c.

Edelweiss—18 in., pure white blossoms, very early. Pkt. 15c; $\frac{1}{8}$ oz. \$1.00; $\frac{1}{4}$ oz. \$1.50.

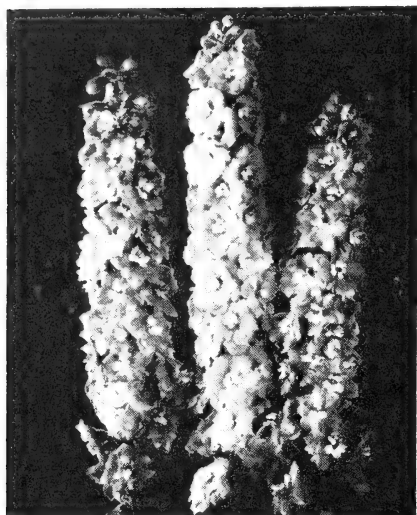
Mrs. Scott Elliott's Hybrids—2½ ft. Pkt. 20c; $\frac{1}{8}$ oz. 50c; $\frac{1}{8}$ oz. 90c.

Long Spurred Varieties.
Blue, Copper, Red, Yellow, White, Mixed.
Any of the above: Pkt. 20c; $\frac{1}{8}$ oz. 50c; $\frac{1}{8}$ oz. 90c.

Longissima—4 in. spurs, bright canary yellow. Pkt. 45c.



COREOPSIS



DELPHINIUM PACIFIC GIANT

DELPHINIUM — Tall Species and Hybrids —

Flowers make a wonderful display in the garden when in full bloom, varying from light blue to lavender and white, valuable in the border. If bloom is cut down to the ground second spike will grow and bloom in fall.

Belladonna Improved—2 ft., turquoise blue. Pkt. 15c; $\frac{1}{8}$ oz. 30c; $\frac{1}{8}$ oz. 50c.

Bellamosum Improved—3 ft., deep blue. Pkt. 15c; $\frac{1}{8}$ oz. 30c; $\frac{1}{8}$ oz. 50c.

Wrexham or Hollyhock Flowered — Choice

Mixed.—Large single, semi-double and double flowers; blue, white and pink combinations and also bicolor varieties. Pkt. 25c; $\frac{1}{8}$ oz. 60c; $\frac{1}{8}$ oz. \$1.00.

Giant Pacific Hybrids—5 ft., the most beautiful and world's best strain, strong, vigorous grower, large stalks.

Choice Mixed—Pkt. 25c; $\frac{1}{8}$ oz. 90c;

Blackmore and Langdon Strain—Clear blue shades with bees of contrasting colors. Mixed. Pkt. 20c; $\frac{1}{8}$ oz. 50c; $\frac{1}{8}$ oz. 90c.

DIGITALIS—Foxglove—3 ft. biennials, should be sown every year, blooms June and July, splendid for beds and borders.

Gloxiniaeflora type — White, Pink, Purple, Mixed.

Any of the above: Pkt. 10c; $\frac{1}{8}$ oz. 20c; $\frac{1}{4}$ oz. 35c.

Isabellina—Striking yellow changing to buff. Pkt. 10c; $\frac{1}{8}$ oz. 30c; $\frac{1}{4}$ oz. 50c.

Hybrids Lutzii—Salmon, 4 ft. Pkt. 10c; $\frac{1}{8}$ oz. 30c; $\frac{1}{4}$ oz. 50c.

DICENTRA—Bleeding Hearts—32 in. Long racemes with pink heart shaped flowers, attractive in any garden. Seeds germinate slowly. Pkt. 25c; $\frac{1}{8}$ oz. 60c.

DICTAMNUS — Gas Plant — Fraxinella. 3 ft.

Bushy plant with fragrant rose-pink flowers on tall spikes. Once established should not be removed. Pkt. 10c; $\frac{1}{8}$ oz. 40c.

DIANTHUS—Hardy Pinks—Flowers of brilliant colors, for garden or rockery. Grow in ordinary soil.

Allwoodii—1 ft. Mixed, double, semi-double and single flowers, from spring to fall, many colors. Pkt. 20c; $\frac{1}{8}$ oz. 50c.

Allwoodii Alpinus—6 in. Blooms first year, July and August, single and semi-double flowers of many shades. Pkt. 20c; $\frac{1}{8}$ oz. 50c.

Rock Garden Variety—Low growing plants, flowers very attractive. Pkt. 20c; $\frac{1}{8}$ oz. 50c.

Winteri—New. Flowers of pure colors, sweet scented, will bloom first year. Pkt. 30c; $\frac{1}{8}$ oz. 85c.

Graniticus—8 in. Low growing plant with bright rose-pink flowers in May and June. Pkt. 20c; $\frac{1}{8}$ oz. 60c; $\frac{1}{4}$ oz. \$1.10.

Clove or Grass Pinks (plumarius)—The old-fashioned sweet scented garden pink. Single mixed. Double mixed. Pkt. 10c; $\frac{1}{8}$ oz. 30c.

EDELWEISS (Leontopodium alpinum)—6 in. Flowers white and star shaped, grown easily in rock garden, blooms in June and July. Pkt. 20c; $\frac{1}{8}$ oz. 50c.

GAILLARDIA—Long stemmed daisy-like flowers, long blooming plants, will grow in ordinary soil.

Grandiflora, Mixed. Variegated red and yellow flowers. Pkt. 10c; $\frac{1}{4}$ oz. 20c; $\frac{1}{2}$ oz. 35c.

Portola Hybrids. 2½ ft. Bronze scarlet, tipped with yellow flowers. Pkt. 10c; $\frac{1}{8}$ oz. 30c; $\frac{1}{4}$ oz. 50c.

Bremen—2 ft. Rich, coppery scarlet less golden tipped flowers. Pkt. 10c; $\frac{1}{8}$ oz. 40c; $\frac{1}{4}$ oz. 70c.

Burgundy—Reddest of all, blossoms all summer. Pkt. 15c; $\frac{1}{8}$ oz. 50c; $\frac{1}{4}$ oz. 80c.

Dazzler. Large yellow flower with maroon center. Pkt. 10c; $\frac{1}{8}$ oz. 30c.

Tangerine. Shades of tangerine-orange with coppery cast. Pkt. 15c; $\frac{1}{8}$ oz. 40c; $\frac{1}{4}$ oz. 75c.

Torchlight. 2 ft. Compact plant, golden yellow with maroon center flowers. Pkt. 20c; $\frac{1}{8}$ oz. 60c; $\frac{1}{4}$ oz. \$1.00.

Goblin. 12 in. Dwarf, with showy red flowers, bordered with yellow. Pkt. 20c; $\frac{1}{8}$ oz. 65c; $\frac{1}{4}$ oz. \$1.15.

GEUM—Attractive double flowers from June to September. Excellent for cutting.

Boresi. 16 in. Bushy plants, orange scarlet flowers from June to October. Pkt. 20c; $\frac{1}{8}$ oz. \$1.00; $\frac{1}{8}$ oz. \$1.75.

Lady Stratheden (Golden Bell)—Loose double yellow flowers. Pkt. 15c; $\frac{1}{8}$ oz. 35c; $\frac{1}{8}$ oz. 60c.

Mrs. Bradshaw. 2 ft. Double orange scarlet flowers. Pkt. 10c; $\frac{1}{8}$ oz. 25c; $\frac{1}{8}$ oz. 45c.

GYPSOPHILIA—Perennial Baby Breath. Masses of white flowers, fine for cutting.

Oldhamiana. 3 ft. New pink, fragrant flowers. Pkt. 15c; $\frac{1}{8}$ oz. 35c; $\frac{1}{4}$ oz. 60c.

Paniculata. Double snow white. 3 ft. Blooms July to September. Good for cutting. Pkt. 20c; $\frac{1}{8}$ oz. 40c; $\frac{1}{8}$ oz. 75c.

Pacifica. 4 ft. Small pink of Paniculata type, good for cutting. Pkt. 20c; $\frac{1}{8}$ oz. 45c; $\frac{1}{8}$ oz. 75c.

HIBISCUS. (Rose of Mallow). 4 ft. Late summer blooming plant, August and September. Mixed colors. Giant mixed. Pkt. 10c; $\frac{1}{4}$ oz. 20c; $\frac{1}{2}$ oz. 35c.

HOLLYHOCKS—Old garden favorite, forms a background for garden, long blooming season, easy to grow, prefers sunny location. Double 6 ft. Maroon, Crimson, Salmon, Scarlet, Pink, White, Yellow, Rose, Mixed. Any of the above: Pkt. 10c; $\frac{1}{8}$ oz. 30c; $\frac{1}{4}$ oz. 50c.

Allegheny, Mixed. 6 ft. Single, double and semi-double fringed petals, many colors. Pkt. 10c; $\frac{1}{8}$ oz. 20c; $\frac{1}{4}$ oz. 35c.

Exquisite, Mixed. 6 ft. Fringed flowers marked in shades from rose to purple, very pretty. Pkt. 15c; $\frac{1}{8}$ oz. 40c; $\frac{1}{4}$ oz. 70c.

IRIS—Japanese. 2 ft. Easily grown from seed, rich colors, blooms in June and July, fine for moist sunny locations, mixed colors. Pkt. 10c; $\frac{1}{4}$ oz. 30c; $\frac{1}{2}$ oz. 50c.

LATHYRUS — Perennial Sweet Pea. Rapid climber with clusters of sweet pea-like flowers, blossoms all summer if seed pods are picked. White, crimson, pink and mixed. Pkt. 10c; $\frac{1}{4}$ oz. 20c; $\frac{1}{2}$ oz. 35c.

IBERIS (Perennial Candytuft). 8 in. Dwarf dark evergreen plants covered with flowers in spring and early summer. Excellent for borders and rock gardens.

Gibraltarica hybrids. Pinkish-white. Pkt. 10c; $\frac{1}{8}$ oz. 25c; $\frac{1}{4}$ oz. 40c.

Sempervirens. Pure white. Pkt. 15c; $\frac{1}{8}$ oz. 45c; $\frac{1}{4}$ oz. 80c.

LAVANDULA. 1½ ft. Fragrant lavender blue flowers, used dry for sweet odor, blooms in July. Pkt. 20c; $\frac{1}{4}$ oz. 45c; $\frac{1}{2}$ oz. 80c.

LUNARIA (Honesty or St. Peter's Penny). Biennial, easy to grow, flowers blue, silvery leaf pod, used for winter bouquet. Pkt. 10c; $\frac{1}{4}$ oz. 40c.

LILIES. Lilies grown from seed, flower the second season. Plant with leaf-mold mixed soil, in well drained location.

Regale, 3½ ft. One of the best lilies, sweet scented, trumpet shaped, white tinted with pink, flushed with yellow throat flowers. Seeds germinate quickly. Pkt. 15c; $\frac{1}{4}$ oz. 35c; $\frac{1}{2}$ oz. 60c.

Tenuifolium (Coral Lily)—20 in. Brightest of all lilies, deep colored flowers, blooms June and July. Pkt. 20c; $\frac{1}{4}$ oz. 50c; $\frac{1}{2}$ oz. 90c.

LOBELIA—Cardinalis (Cardinal Flower)—2 ft. Bronzy green foliage, spikes of scarlet, flowers from July to October. Pkt. 15c; $\frac{3}{8}$ oz. 50c; $\frac{1}{8}$ oz. 90c.

LUPINES—Tall, colorful spikes of pea-like blossoms during May and June. Do well in sandy, well drained soil, fine for cutting.

Russel. The outstanding lupine, unusual colors of yellow, blue, pink and bicolors, make a wonderful display. Pkt. 15c; $\frac{1}{8}$ oz. 60c.

Blue. Spikes of blue shaded purple. Pkt. 10c; $\frac{1}{4}$ oz. 25c; $\frac{1}{2}$ oz. 40c.

Lavender Queen. Lavender tinted pink.

Rose. Light and dark rose.

Yellow. Bright yellow. Any of the above: Pkt. 15c; $\frac{1}{4}$ oz. 45c; $\frac{1}{2}$ oz. 80c.

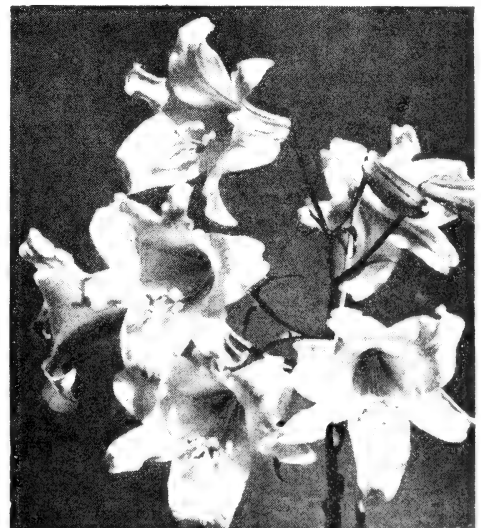
Fairway's Specials, Mixed. Pkt. 10c; $\frac{1}{4}$ oz. 20c; $\frac{1}{2}$ oz. 35c.

LYCHNIS—Old fashioned, easily grown flower, blooms summer and autumn.

Arckwrightiii, 2 ft. Rose to scarlet blossoms. Pkt. 15c; $\frac{1}{8}$ oz. 40c.

Chalcedonica. 2 ft. Fiery red blossoms form a Maltese Cross. Pkt. 10c; $\frac{1}{4}$ oz. 25c.

Haageana Hybrids, Mixed. 1½ ft. Colors ranging from white to scarlet, blooms June and July. Pkt. 10c; $\frac{1}{8}$ oz. 50c;



LILY

PENTSTEMON (Beards Tongue). Very showy, with pyramidal spikes bearing trumpet-like flowers.

Large Flowering Hybrids. New. Fine assortment of colors. Pkt. 15c; $\frac{1}{4}$ oz. 60c.

PYRETHRUM. Easy to grow from seed, large daisy-like flower, blooms in June, will produce a second flowering.

Roseum. Double immense deep rose. Pkt. 25c; $\frac{3}{8}$ oz. \$1.00.

Double white, pure white. Pkt. 40c; $\frac{3}{8}$ oz. \$1.00.

Double Mixed. Pkt. 25c; $\frac{3}{8}$ oz. 30c.

Single Mixed. Pkt. 10c; $\frac{1}{8}$ oz. 40c.

Aureum (Golden Feather). Small ball shaped white flowers, fine for edging. Pkt. 10c; $\frac{1}{4}$ oz. 25c.



PYRETHRUM, Painted Daisies

PRIMULA (Hardy Primrose). Early flowering with pretty brilliant colored blossoms, prefer shade and rich, moist soil. Good for borders and rock gardens.

Mumstead strain. Mixed. Many colors, including brown, orange and pastel shades, flowers fragrant. Pkt. 30c.

Bullesiana Hybrids. 15 in. Flowers of light and dark blue, orange, rose and carmine. Pkt. 30c; $\frac{1}{8}$ oz. \$1.00.

Cashmiriana. 10 in. Very early flowering, blossoms lilac shade. Pkt. 30c; 3 pkts. 75c.

Florindea. 3 ft. Blossoms late June to August, with fragrant bright yellow flowers, 60 to 80 to a plant. Pkt. 20c; $\frac{1}{8}$ oz. 75c.

Grandiflora Mixed. Fairway's specials. Large flowering. Pkt. 25c.

POPPIES—Hardy. Poppies are easily grown from seed. Orientals do not come true from seed, but make fine plants.

Oriental (Oriental Poppies). Large bright colored flowers, May and June, often 5 and 6 in. across.

Perry's White. Large satiny white flowers with purple blotch center. Pkt. 25c; $\frac{3}{8}$ oz. 90c.

Mrs. Perry. Delicate salmon rose with black blotch. Pkt. 20c; $\frac{3}{8}$ oz. 70c.

The Feltham. Scarlet orange and apricot shades without blotch, large flowers. Pkt. 20c; $\frac{1}{8}$ oz. 70c.

Princess Victoria Louise. Large salmon rose flowers. Pkt. 15c; $\frac{1}{8}$ oz. 45c.

Fairway's Specials Mixed. Crimson, red, orange, salmon, scarlet and many other colors. Pkt. 15c; $\frac{1}{8}$ oz. 55c.

Nudicaule or Iceland Poppy. 12 in. Bright colored long stemmed flowers, prefer cool moist soil. If blossoms are picked plant will bloom all summer. Yellow, white, orange and mixed.

Any of the above. Pkt. 10c;

Double Mixed Special Strain. Pkt. 15c; $\frac{1}{8}$ oz. 50c.

Coonara Pink Improved. Pink and salmon shades. Pkt. 10c; $\frac{1}{8}$ oz. 50c.

El Monte. Tangerine orange color, flowers very large. Pkt. 10c; $\frac{1}{8}$ oz. 50c.

Gartref Art Shades. Large flowers. Pkt. 10c; $\frac{1}{8}$ oz. 40c.

Fairway's Special Iceland Mixed. Pkt. 10c; $\frac{1}{8}$ oz. 40c.

RUBECKIA — Excellent showy plant, free blooming, daisy-like flowers.

Speciosa (Newmanii) — Yellow orange blossoms, deep brown center. July to September. Pkt. 10c; $\frac{1}{8}$ oz. 35c.

SALVIA—4 ft. Showy plants, spikes covered with blue flowers August and September.

Azurea Grandiflora—Pkt. 10c; $\frac{1}{8}$ oz. 50c.

SCABIOSA—Does well in fairly rich soil in sunny location, blooms June to September. Graceful flowers in shades of blue and lavender, long stemmed.

Caucasica—18 in. Light blue, fringed, long-stemmed flowers. Pkt. 10c; $\frac{1}{8}$ oz. 50c.

House's New Giant Hybrid—18 in. Large, pale blue, long-stemmed flowers. Pkt. 20c; $\frac{1}{8}$ oz. 75c.

Columbaria Pink—Large rosy mauve flowers, very free blooming. Pkt. 10c; $\frac{1}{8}$ oz. 50c.

Columbaria Lavender—Flowers lavender, 2 in. in diameter, good for cutting. Pkt. 10c; $\frac{1}{8}$ oz. 50c.

SHASTA DAISY—Suitable for borders and cut flowers, bearing large blooms that are very showy.

Alaska—2½ ft. Large white flowers with yellow centers. Pkt. 10c; ⅛ oz. 30c.

Giant Double—Seeds produce double and semi-double, giant white and creamy white flowers. Pkt. 30c; ⅛ oz. \$1.10.



DAISY

SWEET WILLIAM—*Dianthus. Barbatus*—1½ ft. Outstanding, early, hardy plants, showy flowers of many vivid colors and combinations.

Red Copper—Bright copper red.

Newport Pink—Salmon rose.

Purple Beauty—Deep purple.

Scarlet Beauty—Bright scarlet.

Giant White—Pure white.

Giant Flowered Mixed.

Any of the above: Pkt. 10c; ⅛ oz. 35c; ¼ oz. 60c.

Dwarf Mixed—Pkt. 10c; ⅛ oz. 30c; ¼ oz. 50c.

Double—Producing about 60 per cent double blooms.

Black, Blood Red, White, Rose, Mixed.

Any of the above: Pkt. 10c; ⅛ oz. 25c.

STATICE—Easy to grow, an everlasting flower. Thrives in poor soil with little moisture, fine for winter bouquet.

Caspia—Stems covered with small lilac flowers.

Dumosa—Silvery gray flowers.

Perezii—Rich bright blue.

Any of the above: Pkt. 10c; ⅛ oz. 40c; ¼ oz. 70c.

TRITOMA—or **Red Hot Poker**—2½ ft. Handsome, deep orange red flowers on long spikes.

Early Flowering Hybrids—Many colors, yellow to orange-red.

Uvaria Grandiflora—4 ft. Blooming from August to November, red in color.

Any of the above: Pkt. 15c; ⅛ oz. 35c.

TROLLIUS—**Globe Flower**—Bright orange or yellow flowers, blooming freely on long stems during May and June, fine for cutting. Seed germinates slowly, before sowing soak seed in hot water about 6 hours.

Earliest of All—Golden yellow. Pkt. 20c; ⅛ oz. 50c.

Golden Queen—Large orange flowers in early summer and autumn. Pkt. 40c; ⅛ oz. 80c.

Choice Hybrids Mixed—Pkt. 20c; ⅛ oz. 50c.

VERONICA—(**Speedwell**)—Hardy, varying in height from 6 in. to 3 ft., blue and white flowers, easily grown.

Longfolia—2 ft. Long spikes of light flowers, July and August. Pkt. 15c; ⅛ oz. 50c; ¼ oz. 85c.

Spicate Blue—2 ft. Bright blue. Pkt. 10c; ⅛ oz. 30c; ⅛ oz. 50c.

Teucrium—12 in. Brilliant blue flowers. Pkt. 15c; ⅓ oz. 30c; ⅛ oz. 50c.

VALERIANA—**Garden Heliotrope**, Hardy, 2 ft. blooms June and July. Has heliotrope odor.

Mixed—Purplish rose and white colors. Pkt. 20c.

VIOLA CORNUTA—Violas are rapidly becoming popular for border, rockery and beds because of their free and long blooming season. Blossom the first year.

Admiration—Dark blue. Pkt. 10c; ⅛ oz. 85c.

Blue Perfection—Blue. Pkt. 10c; ⅛ oz. 80c.

Jersey Gem—Fragrant, violet blue. Pkt. 20c; ⅓ oz. \$1.00.

Puck—Purple and yellow. Pkt. 10c; ⅛ oz. 50c.

White Perfection—White. Pkt. 10c; ⅛ oz. 70c.

Cornuta Small Flowered Mixed. Pkt. 10c; ⅛ oz. 40c.

Hybrids, Cornuta Large Flowered—

Apricot—Rich apricot. Pkt. 20c; ⅛ oz. 50c.

Arkwright Ruby—Bright ruby crimson. Pkt. 20c; ⅓ oz. 50c.

Primrose Dame—Yellow. Pkt. 10c; ⅛ oz. 60c.

Lutea Splendens—Yellow. Pkt. 10c; ⅛ oz. 70c.

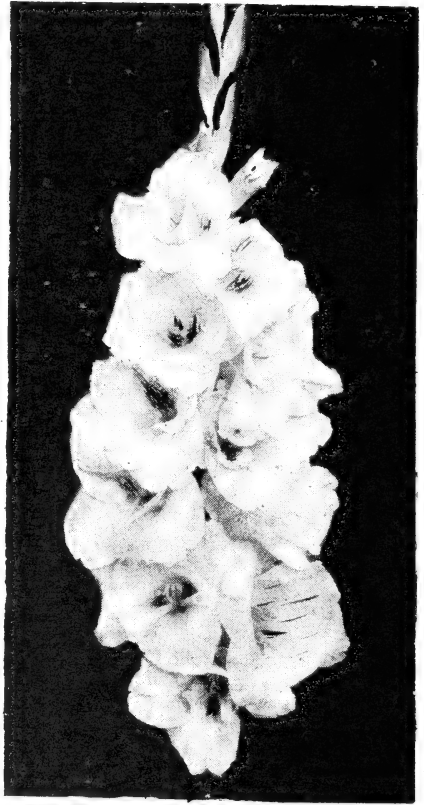
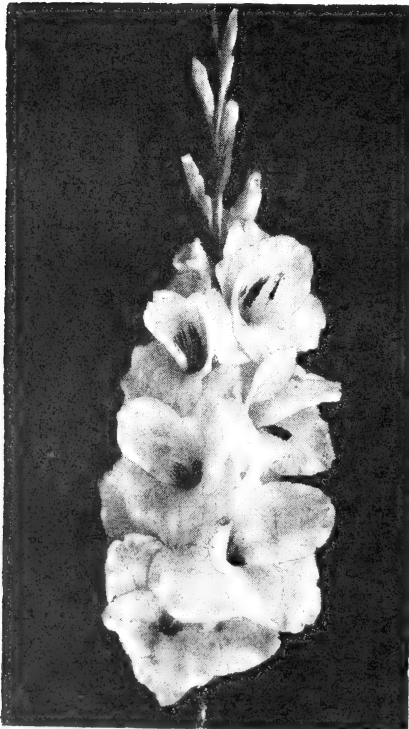
Primrose Perfection—Primrose. Pkt. 10c; ⅓ oz. 40c.

Special Mixture—Many colors. Pkt. 15c; ⅛ oz. 35c.

GLADIOLUS BULBS

(No. 1 SIZE)

- Berty Snow**—Lavender pink.
10c each; 95c doz.; \$7.00 per 100
- Beacon**—Scarlet.
12c each; \$1.25 doz.; \$9.00 per 100
- Betty Nuthall**—Coral with orange throat.
8c each; 85c doz.; \$6.00 per 100
- Baccarole**—Deep orange ruffled.
10c each; 95c doz.; \$7.00 per 100
- Tip Top**—Large dark red.
10c each; 95c doz.; \$7.00 per 100
- Dr. F. E. Bennett**—Scarlet throat striped with ruby and white.
10c each; 95c doz.; \$7.00 per 100
- Marey Frey**—Lavender.
10c each; 95c doz.; \$7.00 per 100
- Primrose Princess**—Best yellow.
8c each; 85c doz.; \$6.00 per 100
- Maid of Orleans**—Large white.
10c each; 95c doz.; \$7.00 per 100
- Mammoth White**—White.
8c each; 85c doz.; \$6.00 per 100
- Minuet**—Lavender.
10c each; 95c doz.; \$7.00 per 100



- Miss Bloomington**—Good yellow.
10c each; 95c doz.; \$7.00 per 100
- Lulu Hunt**—Shrimp geranium pink.
10c each; 95c doz.; \$7.00 per 100
- Margaret Fulton**—Early salmon.
10c each; 95c doz.; \$7.00 per 100
- Rewi Fallu**—Salmon red.
12c each; \$1.25 doz.; \$9.00 per 100
- Picardy**—Soft pink.
10c each; 95c doz.; \$7.00 per 100
- Phyllis McQuiston**—Pure pink.
10c each; 95c doz.; \$7.00 per 100
- Dream o' Beauty**—Large rose red.
10c each; 95c doz.; \$7.00 per 100
- Red Phipps**—Rich red.
10c each; 95c doz.; \$7.00 per 100
- Rose Van Lima**—Pure white.
12c each; \$1.25 doz.; \$9.00 per 100
- Wasaga**—Buff ruffled.
10c each; 95c doz.; \$7.00 per 100
- Vredenburg**—Large white.
10c each; 95c doz.; \$7.00 per 100
- Fairway's Special Selections, Mixed**—Including the above varieties. 12 for 85c; 25 for \$1.65
50 for \$3.00; 100 for \$5.50

IRIS

OUTSTANDING VARIETIES GORGEOUS COLORS—LARGE FLOWERS. THESE MAGNIFICENT FLOWERS SHOULD BE IN YOUR GARDEN. AMAZINGLY LOW PRICED—ENABLES YOU TO ADD TO YOUR COLLECTION—OR TO START A COLLECTION OF WHAT WE BELIEVE ARE THE FINEST IRIS GROWN.

Prices are per each for standard divisions, and prepaid.

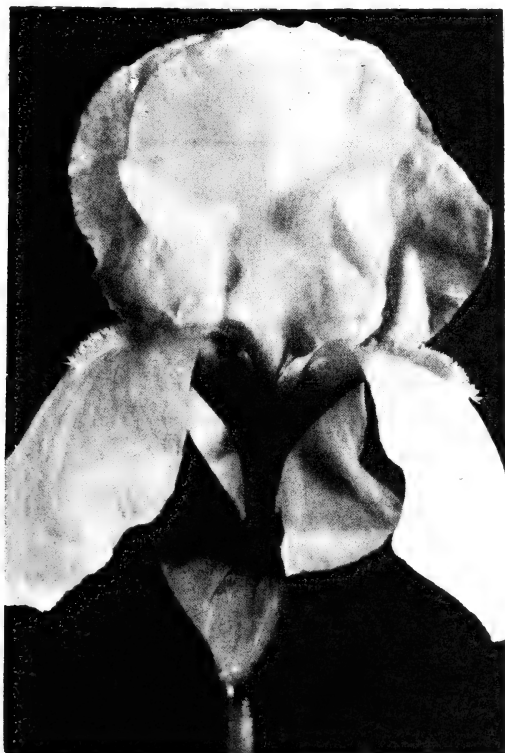
Each Iris Root Plainly Labeled.

(S means Standards; F means Falls.)

TALL BEARDED IRIS

- ABELARD—S, livid brown. F, purple... .15
- ALTA CALIFORNIA—Yellow, faintly bronzed, large blooms25
- AMENTI—S, grey. F, violet mauve.... .25
- AMNERIS—Gun metal blue, very late... .25
- AUTUMN HAZE—S, wine. F, lavender violet35

- AUTUMN KING—Lavender-blue, blooms spring and fall..... .15
- BALLERINE—Blue15
- BEOWULF—S, rich brown. F, maroon.. .40
- BEUCHLEY'S GIANT—Immense light blue. Stalks heavy and tall..... .25
- BLACK DOUGLAS—S, dark violet. F, blackish violet. Blue beard tipped yellow.... .25
- BLACK WINGS—Deep blue, almost black. Large25
- BLUE TRIUMPH—Light blue. The flowers are very large heavy substance, velvety finish. Tall25
- BLUE VELVET—Rich, deep blue, heavy substance25
- BRUNHILDE—Deep toned, violet-blue self. Blue beard50
- BUTO—S, royal purple. F, dark violet. Early.25
- CALIFORNIA GOLD—Tall deep yellow. (Very neat)25
- NARANGA—Rich yellow..... .25
- CAPRICE—Rose red15
- TREASURE ISLAND—Olive yellow..... .50
- COPPER LUSTER—Copper and gold blend .50
- MISSOURI—Clear vivid blue..... .50
- CORONATION—Yellow15
- DESERET—Yellow35
- DOLLY MADISON—Mauve blend15
- DON JUAN—Red shades..... .15
- DR. CHAS. MAYO—Lovely lavender-pink .15
- DOXA—Olive buff and yellow..... .15
- E. B. WILLIAMSON—Glowing copper... 1.00
- ETHEL PECKHAM—Blazing red..... .40
- EL CAPITAN—Giant flowered bluish violet of heavy substance25
- ELEANOR ROOSEVELT—An Iris of rich purple. Blooms early in spring, then (in most sections) again in fall..... .25



IRIS

- ETHELWYN DUBUAR**—Deep pink. (Magnificent)25
- EVOLUTION**—Coppery bronze self, with heavily frilled standards. **F**, copper-bronze, overlaid blue25
- FAIRY**—White and soft blue..... .15
- FRANCHEVILLE**—Fawn and red purple .15
- FRIEDA MOHR**—One of the largest and finest **S**, light lilac-pink. **F**, deep lilac-rose.... .25
- GUDRUN**—Fine. Very large lustrous white. Good substance35
- HAPPY DAYS**—Falls a shade deeper than the standards, the beard an orange yellow... .25
- INDIAN CHIEF**—The velvety falls are deep blood-red, blended with bronze, and the standards are lighter in tone..... .15
- JERRY**—Perfectly formed, brilliant red Iris. Fine25
- LOS ANGELES**—Giant plicata, the standards faintly edged blue..... .25
- KING OF IRIS**—Soft blue15
- LCREZIA BORI**—Soft yellow ruffled.. .40
- MABEL TAFT**—Blue Bicolor, large..... .25
- MARY BARNETT**—Light blue15
- MARQUITA**—Ivory yellow, striped red on falls25
- MONSIEUR**—Violet15
- MOONLIGHT**—Silvery white15
- NENE**—Lilac and red..... .25
- NOWETA**—Exquisite creamy pink. Frilled .15
- OMAHA**—Combination of coppery pink and cinnamon25
- OZONE**—A beautiful mauve toned blend. Bluish violet self with pinkish sheen. Brown haft White beard tipped orange. Large..... 40
- PAULETTE**—Giant Pale Blue..... .25
- PEACHES**—Peach apricot blend. (Very odd.)25
- PICADOR**—**S**, yellow. **F**, red..... .25
- PINK OPAL**—Light pink25
- PINK SATIN**—Clear light pink, uniform. Flowers large with satiny sheen..... .25
- RAMESES**—A symphony in rose, pink, and buff25
- RED DOMINION**—The flowers are large, deep red standards, slightly frilled; broad, velvety red falls, flushed with a near black, velvety luster in the center. A glowing ox-blood red .25
- RHEINE NIXE**—White and purple..... .15
- RHEINGAUPERLE**—Pink15
- RHEINTOCHTER**—**S**, white with lavender shadows. **F**, violet-purple, with white margins25
- SACRAMENTO**—The large flowers have a white ground, the standards heavily edged red-purple, falls reticulated with same color... .25
- SAN FRANCISCO**—Tall stems, branching low and wide, large white flowers, both standards and falls distinctly edged lavender..... .25
- SENSATION**—Gigantic cornflower, blue self .25
- SIERRA BLUE**—Soft clean blue..... .35
- SIR MICHAEL**—**S**, lavender. **F**, purple, suffused red15
- SNOWKING**—White50
- SPOKAN**—**S**, glowing red-brown, Falls similar but deeper shade. Large. Heavy texture... .25
- TAJ MAHAL**—White15
- TENEBRAE**—**S**, violet. **F**, violet purple... .15
- THE RED DOUGLAS**—New red. (Beautiful) 1.00
- TROSTRINGER**—Soft pink15
- VALENCIA**—Orange15
- VENUS DE MILO**—White. Large..... .25
- WM. MOHR**—Gigantic blossoms. Lilac, veined purple. Plants and roots small, but flowers immense25



FAIRWAYS IRIS COLLECTION
NAMED VARIETIES
(UNLABELED)

6 for .50

FAIRWAYS TESTED VEGETABLE SEEDS

BEANS (Green Pod)

Tendergreen—53 days. 18 in. bush, upright with good leaf growth, pods straight; round, crisp, meaty, stringless and very fine flavor. Pkt. 10c; ½ lb. 25c; lb. 45c; 2 lbs. 85c.

Bountiful Stringless—50 days. 18 in. upright bush, exceptional cropper, wide thin and flat pod, very meaty and of fine flavor. Excellent for market and home garden. Pkt. 10c; ½ lb. 25c; lb. 40c; 2 lbs. 75c.

Giant Stringless Green Pod—53 days. Heavy stocky vines, excellent for market gardens, widely used for canning, stringless throughout entire growth. Pkt. 10c; ½ lb. 25c; lb. 40c; 2 lbs. 75c.

Stringless Green Pod—50 days. Plants large, very productive, meaty, stringless and of excellent quality for canning cut beans. Pkt. 10c; ½ lb. 25c; lb. 40c; 2 lbs. 75c.

Black Valentine Stringless—50 days. A good early variety, strong producer and excellent shipper. Pkt. 10c; ½ lb. 25c; lb. 40c; 2 lb. 75c.

Red Valentine Stringless—54 days. Medium size plant, very productive, very fleshy, crisp and tender. Pkt. 10c; ½ lb. 25c; lb. 40c; 2 lb. 75c.

Plentiful—51 days. An early maturing, very productive bean. Dwarf plants, beans stringless and of choice quality. Pkt. 10c; ½ lb. 25c; lb. 45c; 2 lb. 85c.

Commodore—53 days. Pods tender, fleshy and stringless at all stages of growth. One of the most prolific of the bush type. Pkt. 15c; ½ lb. 35c; lb. 65c; 2 lb. \$1.20.

FIELD BEANS

Robust—110 days. Strong growing, heavy yielding, large seeded, green podded bean. Pkt. 10c; ½ lb. 20c; lb. 30c; 2 lb. 50c.

Improved Navy—100 days. Strong grower, light green pods, very productive. Pkt. 10c; ½ lb. 20c; lb. 30c; 2 lb. 50c.

SHELL BEANS

White Kidney—100 days. 18 in. bush, dark vine, scant growth of large leaves, used as a dry bean. Seeds white, kidney shaped. Pkt. 10c; ½ lb. 20c; lb. 35c; 2 lb. 60c.

Red Kidney—96 days. 18 in. bush, vine dark colored, pods dark, wide, flat and straight. Used as a dry shell bean. Seed dark red, medium large and kidney shaped. Pkt. 10c; ½ lb. 20c; lb. 35c; 2 lb. 60c.

White Marrow—100 days. Bush 16 to 18 in., strong growing, short runner type. Pods medium size, dark, wide, flat, straight and stringy. Used as a dry shell bean. Seed pure white, medium large, rounded oval. Pkt. 10c; ½ lb. 20c; lb. 35c; 2 lb. 60c.

LIMA BUSH BEANS

Baby Potato—All-America Silver Medal winner 1940. 12 to 16 inches high, very sturdy in growth. Early, prolific and is a small, thick seeded butter bean with some Fordhook flavor. Attractive bright green in eating stage and creamy white when dry. Well adapted for home garden, canning and produce market. Pkt. 10c; ½ lb. 30c; lb. 50c; 2 lb. 85c.

Fordhook Bush—75 days. Vines strong and erect. Pods are large, thick, and contain three to five beans. Popular market gardeners lima bean. Pkt. 10c; ½ lb. 25c; lb. 45c; 2 lb. 85c.

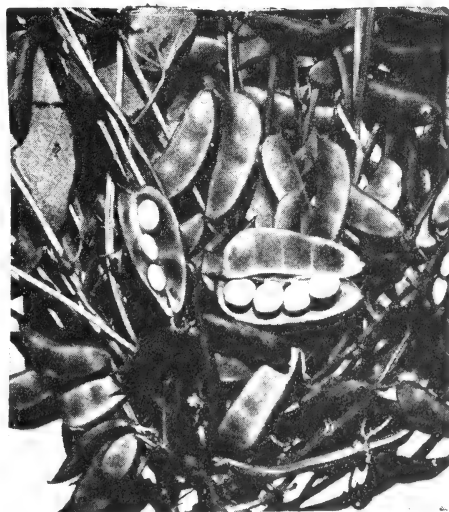
Hendersons Bush—66 days. Plants bushy, very productive. Green shelled beans, small flat, and of excellent quality. Pkt. 10c; ½ lb. 25c; lb. 45c; 2 lb. 90c.

Burpee's Bush—78 days. Plants 18 to 20 in. high, very productive. Beans flat, wide, and of excellent quality. Pkt. 10c; ½ lb. 25c; lb. 45c; 2 lb. 85c.

Burpee's Improved Bush—75 days. Similar to Burpee's Bush but slightly earlier and larger podded. Erect, vigorous and very productive. Pkt. 10c; ½ lb. 25c; lb. 45c; 2 lb. 85c.

New Wonder Bush—75 days. Vigorous grower, beans are of flat shape and good flavor. Pkt. 10c; ½ lb. 25c; lb. 45c; 2 lb. 85c.

Sunnybrook—84 days. Vine dark, thick and upright growth. Seed dry, medium small, cream-white and thick. Pkt. 10c; ½ lb. 30c; lb. 50c; 2 lb. 95c.



BABY POTATO LIMA BEAN

LIMA POLE BEANS

Early Leviathan—79 days. Plants 5 to 8 ft. Very vigorous. Seed large, flat and dull white. Pkt. 10c; ½ lb. 25c; lb. 45c; 2 lb. 85c.

King of the Garden—88 days. The old standard variety. Bearing season continues until frost. Pods large and well filled with beans of mammoth size. Pkt. 10c; ½ lb. 25c; lb. 45c; 2 lb. 85c.

Large White Seeded—88 days. Very productive. A favorite for market growers. Beans are large, flat and white. Pkt. 10c; ½ lb. 25c; lb. 45c; 2 lb. 85c.

GOLDEN WAX BUSH BEANS

Surecrop—53 days. Plants branch freely carrying large crops of fleshy, crisp beans. Pkt. 10c; ½ lb. 25c; lb. 45c; 2 lb. 80c.

Improved Golden Wax—52 days. One of the best known wax beans, early and a good producer. Pkt. 10c; ½ lb. 25c; lb. 45c; 2 lb. 85c.

Improved Kidney Wax—52 days. A long flat podded bean, excellent for table use. Pkt. 10c; ½ lb. 25c; lb. 45c; 2 lb. 80c.

Wardwell's Kidney Wax—50 days. Hardy and productive. Excellent quality and no string in early growth. Delicate waxy yellow in color. Pkt. 10c; ½ lb. 25c; lb. 45c; 2 lb. 80c.

Round Pod Kidney Wax—52 days. Plants strong and very productive. Very crisp and of best quality. Bean light yellow in color. Pkt. 10c; ½ lb. 25c; lb. 45c; 2 lb. 80c.

Pencil Pod Wax—52 days. Pods bright yellow, round, fleshy, long, crisp and tender. Very good for home garden. Pkt. 10c; ½ lb. 25c; lb. 45c; 2 lb. 80c.

Univalved Wax—52 days. Plant large and vigorous. Pods somewhat flat but fleshy. Have a trace of strings but quite fiberless. Pkt. 10c; ½ lb. 25c; lb. 45c; 2 lb. 80c.

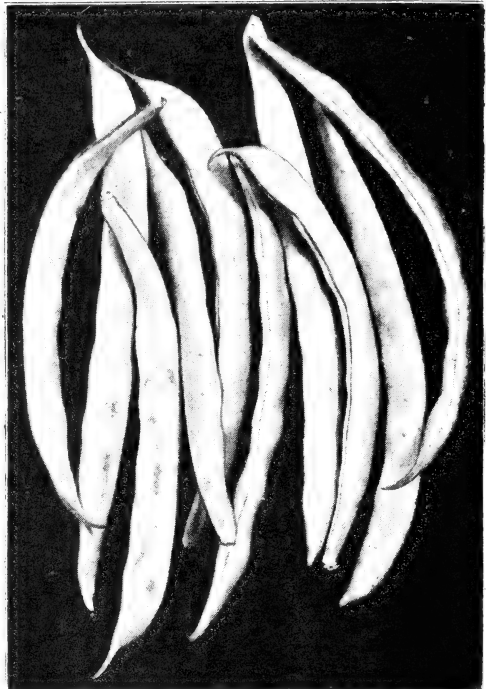
GREEN POD POLE BEANS

Kentucky Wonder—65 days. Vines vigorous, climbs well and very productive. Pods carried in large clusters, stringless. Pkt. 10c; ½ lb. 25c; lb. 40c; 2 lb. 75c.

Burger's Stringless—64 days. Pods 6 to 7 in. long, round, slender and straight. Flesh very tender and stringless. Pkt. 10c; ½ lb. 25c; lb. 40c; 2 lb. 75c.

Early White Creaseback—63 days. Extremely early pole bean. Very productive and bearing pods in clusters of from 4 to 12, and medium in length. Pkt. 10c; ½ lb. 25c; lb. 40c; 2 lb. 75c.

Lazy Wife—72 days. Heavy growing pole type, pods broad, flat, straight and stringless. Crisp and well flavored, good as snaps and dry shell. Pkt. 10c; ½ lb. 25c; lb. 40c; 2 lb. 75c.



PENCIL POD WAX

Horticultural Cranberry—74 days. Vines bear short, broad, pale green pods, becoming streaked with red as they ripen. Good green or dry. Pkt. 10c; ½ lb. 25c; lb. 40c; 2 lb. 75c.

Scarlet Runner—90 days. Very strong grower, dark colored, long runner pole type. Coarse grained at all stages, usable as snaps when very small. Mostly used as an ornamental vine because of its purple flowers that last until frost. Pkt. 10c; ½ lb. 25c; lb. 40c; 2 lb. 75c.

Yard Long—72 days. Short runner pole type. Pod light green, slim and growing about 15 to 20 in. long, crisp and tender. Pkt. 15c; ½ lb. 30c; lb. 50c; 2 lb. 90c.

WAX POLE BEANS

Kentucky Wonder Wax—68 days. Heavy pole growing type. Pods meaty, crisp, and well flavored, very heavy bearer over a long period of time. Pkt. 10c; ½ lb. 25c; lb. 45c; 2 lb. 85c.

Golden Cluster Wax—74 days. Vigorous and very productive, light yellow and of fine quality, very meaty. Pkt. 10c; ½ lb. 25c; lb. 45c; 2 lb. 85c.

BEETS

Detroit Dark Red—55 days. Early, one of the best for home and canning. Roots globular, deep ox-blood red. Pkt. 10c; oz. 35c; 4 oz. 85c; ½ lb. \$1.50.

Crosby's Egyptian—50 days. Widely known for table use, skin dark red, flesh lighter in color. Pkt. 10c; oz. 35c; 4 oz. 85c; ½ lb. \$1.50.

Early Wonder—55 days. Popular with gardeners for uniform shape and red flesh. Pkt. 10c; oz. 30c; 4 oz. 85c; ½ lb. \$1.50.

Good for All—55 days. Developed from Detroit Dark Red. Extra fine for canning and pickling whole at 1 to 2 in. in diameter. Flesh deep crimson. Pkt. 10c; oz. 30c; 4 oz. 95c; ½ lb. \$1.75.

Crimson Globe—58 days. Flesh dark red, faintly zoned with purplish white, nearly a perfect globe, usually smooth and clear of side roots. Pkt. 10c; oz. 35c; 4 oz. 85c; ½ lb. \$1.50.

Improved Early Egyptian—50 days. Roots very dark red, rounded on top, flat beneath. Best for forcing and producing an early crop. Pkt. 10c; oz. 30c; 4 oz. 85c; ½ lb. \$1.50.

MANGEL WURZEL and SUGAR BEETS

Pkt. 10c; oz. 25c; 4 oz. 65c; ½ lb. \$1.20.

Golden Tankard—Cylindrical shape, deep rich yellow. Flesh yellow circled with white. One of the best for feeding stock.

Giant Rose, Half Sugar—Combines the feeding value of the sugar beet with the size of the Mangel beet. Flesh bright pink in upper half, shading lighter to lower parts.

Mammoth Long Red—The largest and heaviest of the mangels. Very productive and satisfactory.

Klein Wanzleben—Most used for sugar manufacturing because of high sugar content, very good for stock feeding. Skin grey-white flesh solid white.

BROCCOLI

Italian Green Sprouting (Calabrese)—60 days. This variety forms a large head consisting of a cluster of bluish-green flower heads. When main head is removed it forms a series of smaller heads on the laterals that sprout from main stem. It is cooked and served like cauliflower. Pkt. 10c; ½ oz. 30c; oz. 50c; 4 oz. \$1.50.

ASPARAGUS SEED

Mary Washington—Rust resistant, one of the best developed, large head with tight tips, quality very fine. Pkt. 10c; oz. 20c; 4 oz. 60c; ½ lb. \$1.10.

BRUSSELS SPROUTS

Fairways Dwarf—75 days. Hardy and early. Grows about 16 to 21 in. high, producing small compact sprouts 1 to 2 in. in diameter, grey green in color. Pkt. 10c; oz. 60c; 4 oz. \$1.70.

Long Island Improved—75 days. A very satisfactory variety for growing conditions in the United States. Pkt. 10c; oz. 75c.

CABBAGE (Chinese or Celery)

Pe Tsai—75 days. Outer leaves dark green enclosing a cylindrical tapering head, 14 to 17 in. long. A very compact, early and sure heading variety of fine quality. Pkt. 10c; oz. 45c; 4 oz. \$1.20.

Wong Bok—80 days. The incurving leaves of this variety form a much shorter, thicker, and more compact head than Pe Tsai. Pkt. 10c; oz. 45c; 4 oz. \$1.20.

CABBAGE SAVOY

Improved American Savoy—86 days. This is the best main crop variety of the savoy strain. It is very vigorous and short stemmed, producing a fairly solid, sweet and tender head. Pkt. 10c; oz. 70c; 4 oz. \$2.10.



BROCCOLI



CABBAGE

CABBAGE (Red)

Red Yellows Resistant—100 days. Good solid header, an intense dark red throughout, one of the best. Pkt. 10c; oz. 70c.

Mammoth Red Rock (Long Island Strain)—103 days. The largest of the red heading varieties. They are hard and of a deep red color, good quality. Pkt. 10c; oz. 60c; 4 oz. \$2.00.

Red Winter Giant—94 days. Very good keeper, head dark red and one of the largest. Pkt. 10c; oz. 50c; 4 oz. \$1.50.

CABBAGE (White)

Copenhagen Market Extra Early—63 days. Earliest of the large heading varieties, heads are large, solid and compact with small core, very fine quality. Pkt. 10c; oz. 55c; 4 oz. \$1.75.

Early Jersey Wakefield—63 days. Plants resistant, very hardy and early forming, growing erect making close planting possible. Heads medium size, cone shaped and solid. Pkt. 10c; oz. 40c; 4 oz. \$1.25.

Charleston Wakefield—71 days. About a week later forming than Early Jersey Wakefield but much larger. Pkt. 10c; oz. 35c; 4 oz. 90c.

Early Flat Dutch—74 days. Large solid header, weighs 8 to 14 lbs. Fine for family use. Pkt. 10c; oz. 40c; 4 oz. \$1.35.

Golden Acre—61 days. Of the strain of Copenhagen Market, slightly earlier but smaller in size, fine grained, solid and well flavored. Pkt. 10c; oz. 60c; 4 oz. \$1.80.

All Head Early—74 days. Heads medium flat, slightly rounded at top, solid and uniform in size and color, of fine quality. Good for shipping and for kraut. Pkt. 10c; oz. 35c; 4 oz. \$1.00.

Glorv of Enkhuizen—80 days. A mid-summer variety, nice large globular heads, fine flavor and crisp. Pkt. 10c; oz. 40c; 4 oz. \$1.35.

All Seasons—89 days. A good keeper in hot weather, solid and of excellent quality. Pkt. 10c; oz. 35c; 4 oz. \$1.25.

Wisconsin All Seasons—96 days. Very excellent for home use, resistant, an all around favorite. Pkt. 10c; oz. 60c; 4 oz. \$1.85;

Penn State Ballhead—105 days. A late variety producing short stemmed plants with flattened globe shaped, solid heads. Pkt. 10c; oz. 70c; 4 oz. \$2.00.

Danish Ball Head—105 days. Very good for shipping or winter storage. Plants short and sturdy, heads round, hard and compact, very tender and crisp. Pkt. 10c; oz. 70c; 4 oz. \$2.15.

Premium Late Flat Dutch—101 days. Adapted to a varied climate, very good producer and keeper for winter use. Large, solid flat header. Pkt. 10c; oz. 45c; 4 oz. \$1.30.

Jersey Queen—65 days. Exceptionally resistant, a splendid summer variety for home use. Pkt. 15c; oz. 65c; 4 oz. \$1.90.

Wisconsin Pride—64 days. Round head, early, dwarf and of compact growth. Resistant cabbage. Pkt. 15c; oz. 85c; 4 oz. \$2.25.

CAULIFLOWER

Dry Weather—60 days. Heads large, snow white and early. Adapted for dry locations. Pkt. 15c; ¼ oz. 85c; ½ oz. \$1.60.

Early Snowball—56 days. Plants small, good header, very compact, solid and pure white. Pkt. 15c; ¼ oz. \$1.00; ½ oz. \$1.85.

Extra Early Dwarf Erfurt—54 days. Dwarf, compact in growth and has a fine solid white core, very early. Pkt. 15c; ¼ oz. 90c; ½ oz. \$1.75.

CELERY

Golden Detroit—Plants are heavy, compact and full hearted. Stems are thick, broad, tender and very crisp. Pkt. 15c; ½ oz. 45c; oz. 85c.

Golden Self Blanching—Popular for its excellent qualities. Plants are heavy and solid, large, tender and firm. Pkt. 10c; ½ oz. 60c; oz. \$1.00.

Golden Plume Special—Very vigorous and stands heat and blight well. Is of the highest table quality. Pkt. 20c; ½ oz. 45c; oz. 85c.

Giant Pascal—Large stalks, solid, crisp and of rich flavor. Very fine for fall and winter. Pkt. 10c; ½ oz. 40c; oz. 75c.

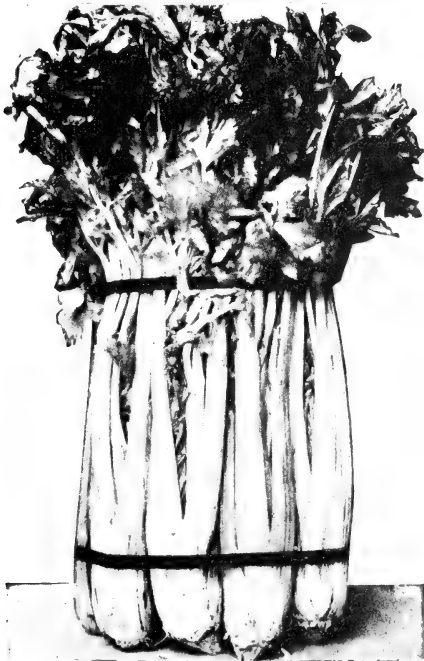
Winter Queen—Large heart, a very good winter sort. Pkt. 10c; ½ oz. 40c; oz. 75c.

Utah Golden—Good brancher, large stalk and of fine quality, good keeper. Pkt. 10c; ½ oz. 60c; oz. \$1.00.

White Plume—Growth vigorous, stalks large and uniformly white. Very good for table use. Pkt. 10c; ½ oz. 40c; oz. 75c.

CELERIAC (Turnip Celery)

Large Smooth Prague—Roots are cooked and prepared as a salad, has a very rich celery flavor. Good winter keeper. Pkt. 10c; ½ oz. 35c; oz. 65c; 4 oz. \$2.00.



CELERY

CARROT

Danvers Half Long—73 days. Early, orange color, very tender. Pkt. 10c; oz. 45c; 4 oz. \$1.25.

Early Scarlet Horn—67 days. Skin orange red, excellent for early planting outdoors, tops small and roots top shaped. Pkt. 10c; oz. 50c; 4 oz. \$1.50.

Early Short Scarlet—Earliest and best carrot grown, almost round. Pkt. 10c; oz. 50c; 4 oz. \$1.50.

Nantes Half Long—70 days*. Excellent for the home garden, tops small, roots bright orange to yellow center, almost no core. Pkt. 10c; oz. 50c; 4 oz. \$1.50.

Oxheart—72 days. Easily harvested, delicious flavor, very sweet and tender. Flesh bright orange color and an all around purpose carrot. Pkt. 10c; oz. 40c; 4 oz. \$1.25.

Touchon—70 days. Sweet, tender, very fine grained and fibrelless, of fine quality. Pkt. 10c; oz. 50c; 4 oz. \$1.50.

Early Chautenay—70 days. Smooth, of a deep orange color and an all around purpose carrot. Pkt. 10c; oz. 45c; 4 oz. \$1.50.

SWEET CORN (Yellow)

Golden Hummer—60 days. The earliest and largest of the Yellow Sweet Corns and one of the best for market gardeners as well as home gardeners. Ears 6½ to 7 inches, 12 rowed; kernel golden yellow, medium deep, broad and excellent flavor. Pkt. 10c; ½ lb. 25c; lb. 40c; 2 lb. 75c.

Golden Bantam—80 days. Most favorite, extra early, golden yellow in color, highest quality. Pkt. 10c; ½ lb. 25c; lb. 40c; 2 lb. 75c.

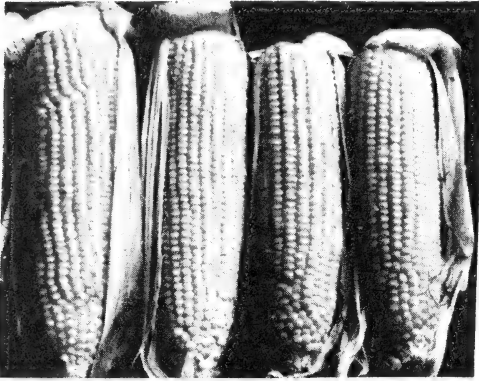
Early Golden Sweet—58 days. A very early variety of Golden Bantam. Pkt. 10c; ½ lb. 25c; lb. 40c; 2 lbs. 75c.

Bantam Evergreen—85 days. A cross between Golden Bantam and Stowell's Evergreen. Retains much of the bantam qualities and has the tender skin of the Evergreen. Pkt. 10c; ½ lb. 25c; lb. 40c; 2 lbs. 75c.

Golden Country Gentlemen—90 days. A cross between Golden Bantam and Country Gentlemen, of fine quality. Pkt. 10c; ½ lb. 25c; lb. 40c; 2 lbs. 75c.

Whipple's Early Yellow—81 days. A 14 rowed ear, 7 to 8 inches in length. Pkt. 10c; ½ lb. 25c; lb. 40c; 2 lbs. 75c.

Golden Gem—60 days. Early yellow, producing 8 to 10 rowed ears. Pkt. 10c; ½ lb. 25c; lb. 40c; 2 lb. 75c.



SWEET CORN

SWEET CORN (White)

Fairway's Early White—80 days. A very early white of medium size, producing well, and easily reaped, good for table use and marketing. Pkt. 10c; ½ lb. 25c; lb. 40c; 2 lb. 75c.

Howling Mob—85 days. A large eared, fine early white corn. Pkt. 10c; ½ lb. 25c; lb. 40c; 2 lb. 75c.

Early Evergreen—83 days. Earlier than Stowell's Evergreen and produces well in northern localities. Pkt. 10c; ½ lb. 25c; lb. 45c; 2 lbs. 85c.

Stowell's Evergreen—94 days. Splendid for home gardens. Heavy yielder and large eared. Pkt. 10c; ½ lb. 25c; lb. 45c; 2 lbs. 85c.

Country Gentlemen—90 days. Small white grains, compact, tender and sweet; of fine quality. Pkt. 10c; ½ lb. 25c; lb. 45c; 2 lbs. 85c.

Black Mexican—High sugar content and large ears of good quality. Pkt. 10c; ½ lb. 25c; lb. 40c; 2 lbs. 85c.

POP CORN

Pkt. 10c; ½ lb. 25c; lb. 40c;
2 lbs. 70c.

South American—112 days. Large yellow kernels, pops to large size, very little hard center.

Japanese Hullers—Medium size, kernel, one of the best for all around use.

White Rice—110 days. Small white kernel, of good quality.

HYBRID and RESISTANT CORNS

Aristogold Bantam—83 days. One of the winners from the All-America Trials, and one which is built to stand abuse from the weather. The handsome, fast growing, rich yellow corn yields extra long 12 to 14 rowed ears with deeper kernels than any other Bantam type. Stalks are 8 to 9 feet tall with dark green leaves and husks. The ears are uniform and symmetrical, making exceptional yields even under adverse conditions of drought or heat because of the deep root system. It is a quality corn, more resistant to ear worm and smut damage, and will stand earlier planting in cold, wet soil than any other type. Pkt. 15c; ½ lb. 35c; lb. 65c; 2 lbs. \$1.20.

Silver Cross Bantam—82 days. Corn Breeders have said it couldn't be done, but this snowy white counterpart of Golden Cross Bantam brings all the quality, flavor and tenderness of the fancy yellow sweet corns into the white class for the first time. The heavy 12 to 14 rowed ears are somewhat larger than the Golden Cross type. Users praise the flavor of the crisp, glistening white kernels, and repeated tests show tenderness equal to the finest of the yellows. Pkt. 15c; ½ lb. 35c; lb. 65c; 2 lbs. \$1.20.

Tendergold—72 days. A very fine corn of outstanding quality. Four days earlier than Golden Bantam and generally twice as productive, the attractive 8 inch, 12 rowed ears commanding a premium on the market. Very tender and holds this quality 2 or 3 days longer than other corns. Pkt. 15c; ½ lb. 35c; lb. 65c; 2 lbs. \$1.20.

Sweet Cross—68 days. Extremely early, sweet with wilt resistance. Pkt. 15c; ½ lb. 40c; lb. 70c; 2 lbs. \$1.35.

Golden Cross Bantam—78 days. Produces a heavier crop and more uniform ear than Purdue Bantam. Pkt. 15c; ½ lb. 35c; lb. 65c; 2 lbs. \$1.20.

Marcross—Pkt. 15c; ½ lb. 35c; lb. 65c; 2 lb. \$1.20.

Early Bancross—67 days. A fine early hybrid. Pkt. 15c; ½ lb. 35c; lb. 60c; 2 lbs. \$1.10.

Ioana—Pkt. 15c; ½ lb. 35c; lb. 65c; 2 lbs. \$1.20.

Hybrid Country Gentlemen—90 days. A good producer, with more uniform ear type and less crippled ears and nibs. Pkt. 15c; ½ lb. 40c; lb. 70c; 2 lbs. \$1.35.

CUCUMBERS (Slicing)

Minca—55 days. One of the earliest and very good yielder; good for salad, slicing and pickling, of great advantage in a small garden. Pkt. 10c; oz. 30c; 4 oz. 80c; ½ lb. \$1.50.

Colorado—60 days. Long, slender, dark green, of good shape and quality. Pkt. 10c; oz. 35c; 4 oz. \$1.00; ½ lb. \$1.75.

Fairway's Long Green—68 days. A very good producer, tender, crisp and solid; good for slicing. Pkt. 10c; oz. 30c; 4 oz. 90c; ½ lb. \$1.60.

Following priced at: Pkt. 10c; oz. 25c; 4 oz. 80c; ½ lb. \$1.45.

Early White Spine—60 days. Fruit 7 to 8 in. long, very productive, three cornered type.

Evergreen White Spine—60 days. 8 to 12 in. long, a good blight resister.

Japanese Climbing or Flowering—58 days. Resistant to disease and insects, dark green when young turning to russet-yellow when matured, best adapted to growing on trellis.

Improved Long Green—68 days. Used for yellow chunk pickles; vine vigorous and productive, fine flavor. Pkt. 10c; oz. 35c; 4 oz. \$1.00; ½ lb. \$1.75.

White Wonder—62 days. Very useful on table and for exhibition. Skin pure white when young, grow about 6 to 8 in. in length. Pkt. 10c; oz. 25c; 4 oz. 80c; ½ lb. \$1.45.

Early Four Tune—63 days. very tender and crisp; good for slicing and table use. Pkt. 10c; oz. 30c; 4 oz. 80c; ½ lb. \$1.45.

CUCUMBERS (Pickling)

Following priced at: Pkt. 10c; oz. 25c; 4 oz. 75c; ½ lb. \$1.40.

Westerfield's Chicago Pickle—57 days. Fruit medium sized, blunt at both ends, has prominent black spines, very good quality.

Snow's Fancy Pickling—56 days. Shorter than Chicago Pickle, tapering from blunt end to tip.

Boston Pickling—58 days. Best for pickling, especially dill, very productive.

West India Gherkin—60 days. Small, oval, prickly sort, very distinct in variety, used only for pickles and then when young.

CRESS

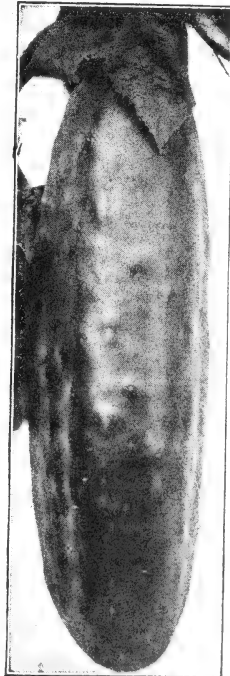
Curled Garden—Used with lettuce, gives a special flavor. Pkt. 10c; oz. 35c; 4 oz. \$1.00.

Water Cress—Adds a pleasant flavor to salads and is usually sown where there is a good supply of water. Pkt. 15c; ½ oz. \$2.25; oz. \$4.00.

CHICORY

French Endive (Whitloof)—Sow in spring, dig in fall, then place parsnip like roots in earth where there is some heat, as in greenhouse, boiler room, or warm cellar, the root will then throw out the blanched salad head. Pkt. 10c; oz. 50c; 4 oz. \$1.50.

Asparagus Chicory—Fresh green sprouts are used when boiled in salt water and served hot or in cold salad. Continues to throw new sprouts during season. Pkt. 10c; oz. 50c; 4 oz. \$1.50.



CUCUMBER, Imp. Long Green

CHIVES

Slender tubular leaves are used to flavor salads to give a delicate onion flavor. It is a perennial herb and is very useful in the home garden. Pkt. 15c; ½ oz. 50c; oz. 90c.

EGG PLANT

Black Beauty—90 days. Dark purple, early and very productive. Pkt. 10c; ½ oz. 35c; oz. 75c; 4 oz. \$2.00.

Improved New York—93 days. Plants grow low, stalky and branching; good producer. Fruit is rich purple in color and large. Pkt. 10c; ½ oz. 30c; oz. 75c; 4 oz. \$2.00.

COLLARDS

Cabbage—Early growth and best heading qualities of the cabbage; heads are rounded and of delicious flavor. Pkt. 10c; oz. 15c; 4 oz. 50c; ½ lb. 90c; lb. \$1.50.

DILL

Mammoth—Plant 2 to 2½ feet high, with leaves cut into thread-like segments. Seeds very flat, having strong, bitter flavor. Used for flavoring pickles. Pkt. 10c; oz. 25c; 4 oz. 65c; ½ lb. \$1.10.

ENDIVE

Deep Heart Fringed—All-America Silver Medal winner 1940. Deep self-blanching heart. Leaves are cut and curled at the edges. Ribs are white, free from pinkish color; and heart is white instead of cream. Good for home and market gardens. Pkt. 10c; oz. 25c; ¼ lb. 65c.

Following priced at: Pkt. 10c; oz. 25c; 4 oz. 60c; ½ lb. \$1.10.

Green Curled—70 days. Center blanched creamy-white, outer leaves a bright green.

Florida Deep Heart—72 days. Has a deep-heart and easily blanched.

White Curled—75 days. The leaves are a light yellow-green which blanches almost white.

Broad Leaf Batavia (Escarole)—92 days. The best variety for salads; leaves curled, bright deep green, inner leaves a creamy white head.

DANDELION

Thick Leaf or Cabbage Variety—Used for spring greens, very tasty when used young. Double usual size. Pkt. 10c; oz. 50c; ; 4 oz. \$1.50.

HORSERADISH SETS

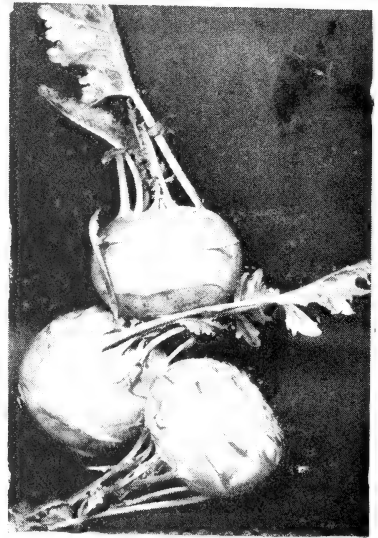
Maliner Kren—The true Bohemian Horseradish, known for its vigorous growth and large sized roots. We offer only right sized roots for spring planting. 6 for 25c; 12 for 40c; 25 for 75c; 50 for \$1.25.

KOHLRABI

Following priced at: Pkt. 10c; oz. 50c; 4 oz. \$1.50; ½ lb. \$2.75.

Early Purple Vienna—60 days. Bluish purple in color, very fine.

Early White Vienna—Most popular, flesh white and tender.



Kohlrabi

KALE or BORECOLE

Following priced at: Pkt. 10c; oz. 35c; 4 oz. \$1.00; ½ lb. \$1.75.

Dwarf Green Curled—60 days. Tender and very fine flavored; leaves curled, used as greens.

Tall Green Curled—63 days. Grow about 30 in. high; very hardy, vine an abundance of dark green leaves.

Siberian—68 days. Plant dwarf, spreading and very hardy.

LEEK

Following priced at: Pkt. 10c; oz. 75c.

Giant Musselburg—Enormous leaves, mild flavored; good exhibition variety.

Large Carentan—Favorite for market; thick large stem of mild flavor.

LEAF LETTUCE

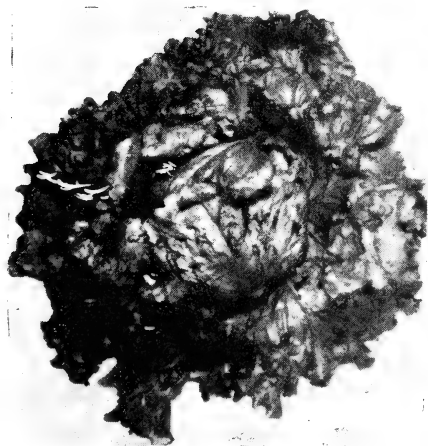
Following priced at: Pkt. 10c; oz. 25c; 4 oz. 70c.

Black Seeded Simpson—Adapted for the home garden. Large rich green leaves, one of the most vigorous in hot weather.

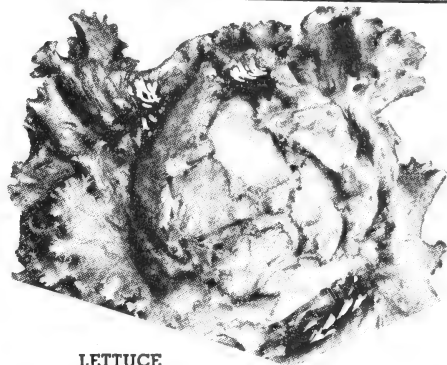
Grand Rapids—Light green, curly leaves and a fine keeper, delicious flavor.

Early Curled Simpson—Early, hardy plant; forming a mass of compact, yellowish-green leaves, tender and sweet.

Prize Head—Very early, quick growing, of excellent flavor and very tender, leaves light green with ragged brown edges.



Fairway's Early Head



LETTUCE

HEAD LETTUCE

Following priced at: Pkt. 10c; oz. 25c; 4 oz. 65c.

Fairway's Early Head—74 days. One of the best loose heading early varieties, fine for the home garden. Very tender and crisp, especially adapted for salads.

New York Iceberg Type, Imp.—78 days. Curled, crisp, heading variety; large size, dark green.

Improved Hanson—78 days. Plant large with thick curled leaves, resistant to hot weather in mid-west sections; sweet, tender heart.

Big Boston—76 days. Head of medium size, compact, with yellow heart of good quality.

Following priced at: Pkt. 10c; oz. 30c; 4 oz. 75c.

Iceberg—80 days. Forms a tight head and resists hot weather, an excellent home garden variety.

May King—62 days. To be planted for one of the earliest producers; good for forcing or garden planting. Heart is tender and of a delicate yellow.

California Cream Butter—75 days. Heads large and globular, with golden yellow interior. Very popular for all around use.

Imperial 847—85 days. One of the best all around varieties, suited for the home garden. Pkt. 10c; oz. 40c; 4 oz. \$1.20.

Mignonette—60 days. Excellent quality, head globular and firm, heart almost white; plant medium small, compact and leaves frilled. Pkt. 10c; oz. 40c; 4 oz. \$1.20.

ROMAINE or COS LETTUCE

Following priced at: Pkt. 10c; oz. 25c; 4 oz. 75c.

Paris White Cos—77 days. Forms upright loose folding heads, inner leaves bleached white, large size, self closing.

Dark Green—80 days. Earliest of all, very delicious.

MUSKMELON

Following priced at: Pkt. 10c; oz. 25c;
4 oz. 75c; ½ lb. \$1.25.

Bender's Surprise—94 days. The largest of the pink fleshed melons, of oval shape, fairly early, of high quality, has a hard rind that is coarsely netted.

Hale's Best—83 days. Large, early, orange fleshed melon with a thick delicious flesh, good for the home garden.

Osage Gem—92 days. Medium size, oval in form, flesh is thick and firm of a rich salmon color, a good keeper.

Hearts of Gold—92 days. Fruit nearly round, finely netted, flesh thick, firm and yellow shading to pink, very tender.

Honey Rock—90 days. Flesh a salmon color, has fine tasty, sweet flavor. A very good seller on the market.

Tip Top—89 days. Nearly round, flesh is deep yellow, sweet, juicy and of fine flavor; firm but not hard.

Golden Champlain—87 days. Plants hardy and vigorous growers, early maturing. Flesh golden yellow in color, very sweet and delicious.

Milwaukee Market—87 days. Medium large, early maturing, pink fleshed melon. Very good eating, slightly oval in shape with a hard rind. Pkt. 10c; oz. 25c; 4 oz. 75c; ½ lb \$1.25.

Persian—102 days. This variety must ripen on the vine to give it a pleasing taste; thick juicy flesh, bright orange in color, needs a long growing season. Pkt. 10c; oz. 35c; 4 oz. 85c; ½ lb. \$1.50.

MUSKMELON (Green Fleshed)

Following priced at: Pkt. 10c; oz. 25c;
4 oz. 75c; ½ lb. \$1.25.

Rocky Ford—95 days. Flesh green, very sweet, of fine flavor and almost round in shape.

Honey Dew—113 days. A creamy smooth skinned melon, green fleshed, very sweet and tasty.

WATERMELON

Following priced at: Pkt. 10c; oz. 20c;
4 oz. 50c; ½ lb. 80c.

Fordhook Early—85 days. Rich pink colored flesh, very sweet and tasty. Especially good for the home garden; fruit large and oval in shape.

Kleckley's Sweet—86 days. Skin a dark green and flesh a rich red, ripening nearly to the rind, oblong shaped, tapering toward the stem.

Stone Mountain—88 days. A very large round melon, having red flesh with fewer seeds than most varieties. Excellent for home use.

Cole's Early—80 days. Flesh bright red, sweet and tender; desirable where the growing season is short, good producer and hardy.

Following priced at: Pkt. 10c; oz. 25c;
4 oz. 60c; ½ lb. \$1.00.

Irish Grey—90 days—Fruit long oval, blunt at both ends, flesh bright red and well flavored; has few seeds, skin is tough though thin.

Kleckley's Improved—86 days. Fruit oblong, tapering slightly toward stem end; rind hard but flesh very crisp, tender and juicy, color bright red.

Citron—95 days—Used for preserves, not good unless cooked, flesh, white, firm and solid.

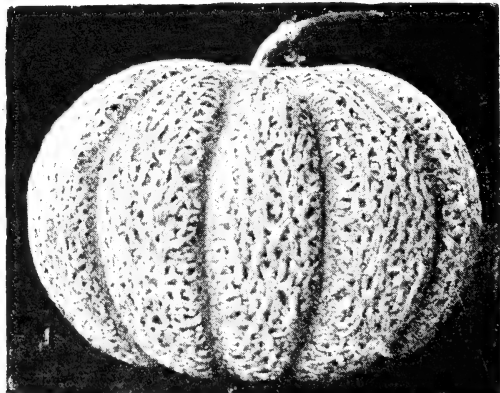
Harris Early—80 days. Medium size, oval, flesh bright scarlet, black seeded, very tender and sweet, does well in northern sections because of earliness.

Following priced at: Pkt. 10c; oz. 25c;
4 oz. 65c; ½ lb. \$1.10.

Dixie Queen—85 days—Flesh rich red, firm, sweet and juicy, with small white seeds, good shipper.

Klondike (Blackseeded)—83 days. Rind dark green, with bright red flesh, seeds small and black.

Kleckley's Wilt Resistant—92 days. Flesh red, medium size, good producer, strong, hardy grower. Pkt. 10c; oz. 15c; 4 oz. 45c; ½ lb. 80c; lb. \$1.25.



MUSKMELON, Honey Rock

MUSTARD

Following priced at: Pkt. 10c; oz. 20c; 4 oz. 50c.

Florida Broadleaf—Upright growing, fairly smooth deep green leaves, strong quick grower.

Southern Giant Curled—Ready for use in about six weeks after sowing, large curled leaves, very prolific, generally used for greens.

White—Rapid growing, upright plant, seeding quickly; seed light yellow.

OKRA

Following priced at: Pkt. 10c; oz. 20c; 4 oz. 45c; 1/2 lb. 80c; lb. \$1.40.

Dwarf Long Green—Low stocky and productive with long pods.

Perkins Mammoth Long Pod—Very productive, medium early, stalks tall, pods long, pointed and slightly curved.

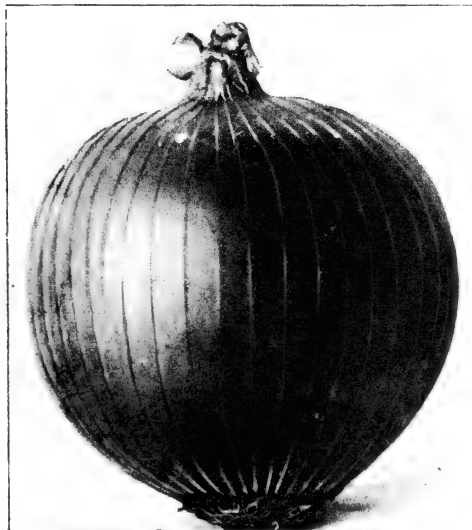
White Velvet—Stalks rather slender, pods very large and long, light cream color, very productive and early.

ONIONS (Red Varieties)

Following priced at: Pkt. 10c; oz. 70c; 4 oz. \$2.10.

Large Red Wethersfield—104 days. Has red skin, flesh pinkish white, bulbs very firm, flat and about 2 to 3 in. thick, used mostly for growing sets.

Southport Red Globe—115 days. Deep red, thin but tough skin, flesh red tinted white, and very fine grained, a good winter keeper.



Onion—Southport Yellow Globe

ONIONS (Yellow Varieties)

Australian Brown—Clear, amber brown, deep, flat, with white flesh, strong flavored bulbs, about 2 to 3 in. in diameter. Pkt. 10c; 1/2 oz. 35c; oz. 60c; 1/4 lb. \$2.00.

Prizetaker—104 days. Yellow globe that matures to large size, requires a long season and should be started early. Pkt. 10c; oz. 75c; 4 oz. \$2.75.

Yellow Bermuda—90 days. A pale straw colored onion grown mostly in southern sections for shipment to northern markets. Pkt. 10c; oz. 85c; 4 oz. \$3.00.

Japanese or Ebenezer—110 days. Deep, flat in shape, yellow and very firm, with thick skin, used mostly for growing sets. Pkt. 10c; oz. 65c; 4 oz. \$2.00.

Yellow Globe Danvers—116 days. A very dependable variety, heavy producer and good keeper, flesh white and mild. Pkt. 10c; oz. 85c; 4 oz. \$2.50.

Following priced at: Pkt. 10c; oz. 85c; 4 oz. \$2.50.

Brigham Yellow Globe—Of good keeping quality and very productive.

Golden Globe—118 days. Rich golden yellow, firm and hard, heavy yielder and fine keeper.

Ohio Yellow Globe—112 days. Hard solid flesh, pure yellow in color, bulb medium large and of good keeping quality.

Southport Yellow Globe—116 days. Large, well shaped globe onion, heavy cropper, dark yellow color and good winter keeper.

ONIONS (White Varieties)

White Bunching Onion—100 days. Makes a white, tender stalk for bunching in early spring and summer. Pkt. 10c; oz. 85c; 4 oz. \$2.50.

Southport White Globe—112 days. Round and of good size, skin pure white, thin and brittle; good keeper. Pkt. 10c; oz. \$1.00; 4 oz. \$3.00.

Crystal White Wax—90 days. Very popular in south. Good for home garden. Pkt. 10c; oz. 65c; 4 oz. \$2.00.

Following priced at: Pkt. 10c; oz. \$1.00; 4 oz. \$3.00.

Mammoth Silver King—96 days. Largest of white flat type, pure white skin and flesh, very mild, fine grained and tender.

White Portugal—105 days. Pure white, sweet, mild flavor, early maturing; good for green onions, salads and as they mature for cooking.

ONION and GARLIC SETS

Onion sets priced at: 1 lb. 45c; 2 lbs. 85c; 5 lb. or more at 40c per lb.

White Bottoms—Small dry and unsprouted.

These sets will mature into large globe shaped onions.

Yellow Bottoms—Medium sized and dry. Will mature into large golden skinned onions.

Red Bottoms—Deep red in color, uniform in size.

Garlic sets priced at: lb. 45c; 2 lbs. 85c; 5 lbs. or more at 40c per lb.

The best results are obtained only by planting the best quality sets. The above are in our estimation of that type. If larger quantities are desired please write for quotations.

PEAS (Dwarf)

Little Marvel—60 days. Height 16 to 18 in., dark green foliage and pods, seed light green, medium size and wrinkled, good for home or market garden.

Giant Stride—58 days. Resistant, heavy yielding and of fine quality; vine 16 to 18 in. in height, dark green with pods well filled with peas.

Laxton's Progress—58 days. The earliest of the dwarf large-podded peas, growing about the same height as Little Marvel, wrinkled seed.

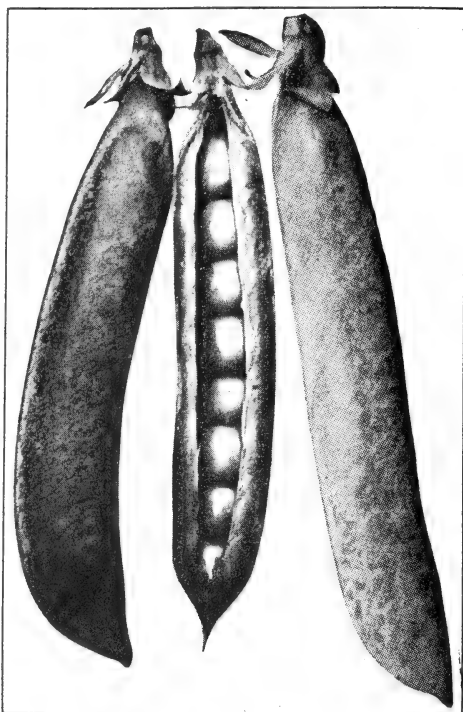
Hundred Fold—61 days. Tall, dark green, vines about 18 in. high; large pods, good for home garden or market, wrinkled seed.

Dwarf Telephone or Daisy—70 days. Vines 19 to 23 in. high, pods pale green, well filled and excellent flavor. Foliage fairly coarse, light green in color.

Dwarf Defiance or Stratagem—72 days. Vines vigorous, pods, dark green, large size, and well filled, sweet and rich in flavor, one of the best.

Any of the above: Pkt. 10c; ½ lb. 25c; 1 lb. 40c; 2 lbs. 75c.

American Wonder—57 days. Grow about 12 to 14 in. high, very sweet and best suited to the home garden, bears very profusely. It is a true early Dwarf type. Pkt. 10c; ½ lb. 25c; lb. 40c; 2 lbs. 75c.



PEAS, Laxton's Progress

PEAS (Medium Height)

Thomas Laxton—60 days. Grows 2 to 3 ft. high, pods medium green, straight, and square, nearly round, very popular variety. Pkt. 10c; ½ lb. 25c; lb. 45c; 2 lbs. 80c.

Alaska or Earliest of All—Vigorous grower, about 2 to 2½ ft. in height, peas a bluish color, very good for market or canning. Pkt. 10c; ½ lb. 20c; lb. 40c; 2 lb. 75c.

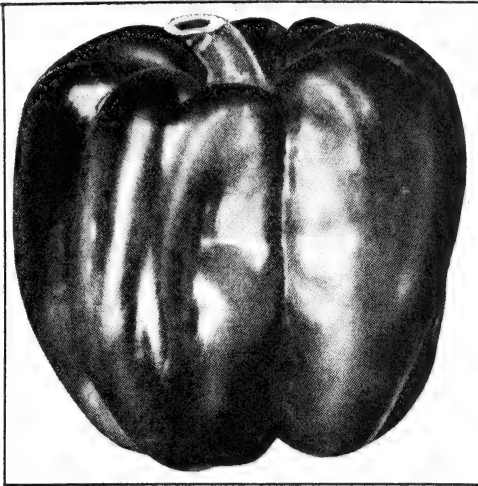
Tall

Everbearing—76 days. Growth vigorous about 3 to 3½ ft. high, pods broad, light colored and blunt. Pkt. 10c; ½ lb. 20c; lb. 40c; 2 lbs. 75c.

White Marrowfat—78 days. Vine hardy, strong, vigorous and light green in color, pods, broad, thick and leathery, fair quality. Seeds smooth, large and white. Pkt. 10c; ½ lb. 25c; lb. 40c; 2 lbs. 75c.

PEAS (Edible Pod)

Dwarf Gray Sugar—66 days. Very early, height about 30 in., pods are crooked flat and broad, used only as an edible pod sort. Pkt. 10c; ½ lb. 25c; lb. 45c; 2 lbs. 80c.



PEPPER

PARSNIPS

Hollow Crown—Large, best known and grown sort, tender and sugary. Pkt. 10c; oz. 30c; 4 oz. 75c; ½ lb. \$1.25.

Improved Guernsey—Larger in diameter but not as long as Hollow Crown. Roots easily dug and of excellent sugary flavor. Pkt. 10c; oz. 30c; 4 oz. 75c; ½ lb. \$1.25.

PARSLEY

Evergreen—All-America Honorable Mention 1940. Darkest green of the curled types. Rapid and vigorous grower and is resistant to frost injury. Deeply cut foliage, dense and full plants. Pkt. 10c; oz. 20c; ¼ lb. 50c.

Champion Moss Curled—Dark green, finely cut and curled leaves. Pkt. 10c; oz. 20c; 4 oz. 50c.

Plain or Italian—Plants hardy, flavor very good, leaves not curled. Pkt. 10c; oz. 20c; 4 oz. 50c.

Double Curled—Dwarf, bright green curled leaves. Pkt. 10c; oz. 20c; 4 oz. 50c.

Hamburg Rooted or German—Mostly grown for its thick fleshy roots which are used to flavor soups, stews, etc. They are nearly white in color and grow about 6 in. in length. Pkt. 10c; oz. 20c; 4 oz. 50c.

PEPPERS (Sweet)

Fordhook—All-America Bronze Medal winner 1940. Very large and early. A prolific variety of rich green color, turning crimson as it matures. Good for market and home garden. Pkt. 15c; ½ oz. 60c; ¼ oz. 35c.

California Wonder—Very thick walled, sweet and mild in flavor, plants about 30 in. high, very strong, upright growth. Makes an excellent type for stuffing. Fruit dark green in color turning to a bright red. Pkt. 10c; ½ oz. 40c; oz. 70c; 4 oz. \$2.25.

Harris Early Giant—Sparse leaf growth, fruit medium large, squared, medium thick walled, bright cherry red color, sweet and mild. Pkt. 10c; ½ oz. 35c; oz. 60c; 4 oz. \$1.80.

World Beater—Good producer and shipper. Fruit 5 in. long by 3½ in. in diameter, flesh very thick and mild. Pkt. 10c; ½ oz. 25c; oz. 60c; 4 oz. \$2.25.

Hungarian (Sweet)—Pale green turning to red, a long slender pepper, often 10 in. in length. Very sweet, used for canning. Pkt. 15c; ½ oz. 35c; oz. 60c; 4 oz. \$2.25.

Ruby King—A very compact and sturdy grower. Producing a thick fleshed sweet and mild pepper. Deep green when young, turning to bright red as they ripen. Pkt. 10c; ½ oz. 35c; oz. 60c; 4 oz. \$2.25.

Pimento—This is a later variety, good for use in salads, heart shaped, mild and sweet. Does not grow very large, good producer. Pkt. 10c; ½ oz. 35c; oz. 65c; 4 oz. \$2.25.

Chinese Giant—Of the same variety as Ruby King only larger and more stocky in form, good producer. Pkt. 15c; ½ oz. 40c; oz. 75c; 4 oz. \$2.75.

PEPPERS (Hot)

Hungarian (Hot)—Long slender type, much used for canning, fruit very hot, long, pale green turning to red. Pkt. 15c; ½ oz. 35c; oz. 60c; 4 oz. \$2.25.

Bull Nose (Hot)—Bell type pepper, very early. Ribs are quite strong while rest of fruit is mild. Deep green turning to scarlet when they mature. Pkt. 10c; ½ oz. 35c; oz. 60c; 4 oz. \$2.25.

Cayenne—Long, pointed, red fruit, very hot. Pkt. 10c; ½ oz. 35c; oz. 60c; 4 oz. \$2.25.

Red Chili—Good producer, fruit small, red and very hot. Pkt. 10c; ½ oz. 35c; oz. 60c; 4 oz. \$2.25.

Tabasco—Very hot, fruit about 1½ in. long, ⅜ in. thick and red when matured. Pkt. 10c; ½ oz. 35c; oz. 60c; 4 oz. \$2.25.

PUMPKIN

Sugar Pie—115 days. Fruit small, orange color fine grained, sweet and delicious, good for pies. Pkt. 10c; oz. 15c; 4 oz. 45c; ½ lb. 75c.

Large Field or Big Tom—120 days. Used for canning and stock feeding, very large, average over 25 lbs. in weight, flesh is thick, dry and sweet. Pkt. 10c; oz. 15c; 4 oz. 30c; ½ lb. 55c.

Winter Green or Luxury—105 days. Early and very prolific, somewhat of the small sugar type but larger, flesh one of the sweetest, used mostly for pies. Pkt. 10c; oz. 15c; 4 oz. 45c; ½ lb. 75c.

Cushaw—112 days. Golden in color, few seeds, sweet fleshed, rather small and slender, good for pies. Pkt. 10c; oz. 15c; 4 oz. 40c; ½ lb. 70c.

Large Cheese—Flesh yellow, thick and tender, fruit flat and dull orange in color, used for canning and stock feeding. Pkt. 10c; oz. 15c; 4 oz. 35c; ½ lb. 60c.

Kentucky Field—120 days. Medium size, oval shaped, lemon yellow color, very tender. Pkt. 10c; oz. 15c; 4 oz. 35c; ½ lb. 60c.

King of the Mammoth—120 days. The largest of pumpkins, sometimes grown to weight of 100 lbs. Flesh and skin bright golden yellow, flesh thick, tender and fine grained. Pkt. 10c; oz. 20c; 4 oz. 50c; ½ lb. 80c.

RADISHES

Improved French Breakfast—25 days. Early, bright rose scarlet with white tips, small quick grower, fine for home garden. Pkt. 10c; oz. 15c; 4 oz. 35c; ½ lb. 60c.

Early Scarlet Globe—24 days. Rich scarlet colored, globe shaped, fine for forcing for early market, excellent flavor, small top, very good for home garden. Pkt. 10c; oz. 25c; 4 oz. 50c; ½ lb. 90c.

Scarlet Turnip White Top—24 days. Crisp, tender and sweet, turnip shaped, scarlet in color with white tips, flesh white and of the best quality. Pkt. 10c; oz. 20c; 4 oz. 45c; ½ lb. 80c.

White Icicle—27 days. This is a radish that runs true to form. It is the picture of an icicle in both shape and color, just the type for continued sowing through the summer. Pkt. 10c; oz. 20c; 4 oz. 45c; ½ lb. 80c.

Cincinnati Market—28 days. Tops short and small, radish long pointed, scarlet; white, crisp and mild. Pkt. 10c; oz. 20c; 4 oz. 45c; ½ lb. 80c.

Early Long Scarlet Short Top—25 days. This is a fine long radish, has a fine flavor, flesh is white, firm and crispy, good for home garden. Pkt. 10c; oz. 20c; 4 oz. 45c; ½ lb. 80c.

Crimson Giant—30 days. Roots are a dark crimson, very firm, white flesh, mild in flavor. Pkt. 10c; oz. 20c; 4 oz. 45c; ½ lb. 80c.

SUMMER RADISHES

Long White Vienna—27 days. Long pure white, smooth roots, very crisp and tender, a good summer radish. Pkt. 10c; oz. 15c; 4 oz. 45c; ½ lb. 75c.

White Strassburg—39 days. Half long type, roots large tapering to a point, crisp, firm white flesh, fairly mild. Pkt. 10c; oz. 15c; 4 oz. 45c; ½ lb. 75c.



RADISH,

WINTER RADISHES

Rose or Scarlet China—60 days. Skin smooth, bright rose in color; flesh crisp and tender, roots cylindrical, tapering sharply to a small tip, good winter keeper. Pkt. 10c; oz. 15c; 4 oz. 45c; ½ lb. 75c.

White China or Celestral—60 days. Large size, standout white color, flesh firm and crisp. Pkt. 10c; oz. 15c; 4 oz. 45c; ½ lb. 75c.

Long Black Spanish—62 days. A good winter variety, skin black, flesh white, crisp and very strong. Pkt. 10c; oz. 15c; 4 oz. 45c; ½ lb. 75c.

Round Black Spanish—60 days. The same type as Long Black Spanish except that the root is round, keeps well during winter. Pkt. 10c; oz. 15c; 4 oz. 45c; ½ lb. 75c.

RHUBARB

Victoria Seed—Stalks large, rich red in color, very heavy and tender, the most popular strain. Pkt. 10c; oz. 30c; 4 oz. 90c; ½ lb. \$1.50.

Victoria Roots—Will produce usable stalks a year sooner than when planted from seed. Roots 2 for 40c; 5 for 80c; 10 or more 14c each.

Strawberry Roots—2 years old. 50c each; 3 for \$1.20; 10 or more 35c each.

SALSIFY or OYSTER PLANT

Mammoth Sandwich Island—Roots 1 to 1½ in. thick, 6 to 8 in. long, skin almost white, mild and well flavored flesh. Pkt. 10c; oz. 50c; 4 oz. \$1.50; ½ lb. \$2.50.



Spinach

SUNFLOWER

Russian Mammoth—10 in. height, provides food for birds in late summer, also good food for poultry. Pkt. 10c; ½ lb. 25c; lb. 40c; 2 lbs. 70c.

SWISS CHARD

Lucullus—Strong growing plant, white stalks and dark green leaves. Pkt. 10c; oz. 25c; 4 oz. 60c; ½ lb. \$1.10.

Fordhook—Large growing, very outstanding type, leaves rich blue green and much crinkled, thick and fleshy. Pkt. 10c; oz. 25c; 4 oz. 60c; ½ lb. \$1.10.

Long Ribbed White—Foliage used for spinach and has a very fine flavor. White mid-ribs prepared like asparagus. Pkt. 10c; oz. 25c; 4 oz. 60c; ½ lb. \$1.10.

SPINACH

King of Denmark—A long season spinach, glossy leaves deep green in color and slightly crumpled; plant bushy. Pkt. 10c; oz. 20c; 4 oz. 60c; ½ lb. \$1.00.

Summer Savory—Good producer in summer, leaves dark green and curled, of excellent quality. Pkt. 10c; oz. 20c; 4 oz. 50c; ½ lb. 90c.

Bloomsdale Dark Green—Leaf crinkled, dark green in color. Pkt. 10c; oz. 20c; 4 oz. 50c; ½ lb. 90c.

Bloomingdale Long Standing—Large and savory typed leaves of medium green color. Slow to seed. Pkt. 10c; oz. 20c; 4 oz. 50c; ½ lb. 90c.

Nobel Giant Thick Leaved—Medium green leaves, large, rounded, slightly crinkled, and tender, good for home garden. Pkt. 10c; oz. 20c; 4 oz. 50c; ½ lb. 90c.

Princess Juliana—Good sized leaves, dark green and crinkled. Pkt. 10c; oz. 25c; 4 oz. 65c; ½ lb. \$1.25.

Old Dominion (Blight Resistant)—Large dark heavily crumpled leaves, used mostly for an early crop. Pkt. 10c; oz. 20c; 4 oz. 50c; ½ lb. 90c.

New Zealand—A branching plant, growing very well in summer heat. Pkt. 10c; oz. 35c; 4 oz. \$1.00.

TOBACCO SEED

Big Havanna—An early variety used largely for cigar wrappers, because of its large leaves. Pkt. 10c; ½ oz. 30c; oz. 60c; 4 oz. \$1.80.

Connecticut Seed Leaf—Hardy, well adapted for growing in the middle and southern states. Pkt. 10c; ½ oz. 30c; oz. 60c; 4 oz. \$1.80.

Burley—Popular Kentucky type, used for both filler and wrapper. Pkt. 10c; ½ oz. 30c; oz. 60c; 4 oz. \$1.80.

TOMATOES

The Burbank—60 days. One of the earliest to mature, medium size, bright crimson, heavy, solid and meaty. Pkt. 10c; ½ oz. 30c; oz. 60c; 4 oz. \$2.25.

Giant Ponderosa—87 days. Large and juicy, solid meat, delightful, mild flavor, a home garden tomato. Pkt. 10c; ½ oz. 35c; oz. 60c; 4 oz. \$2.20.

Earliana—65 days. Early medium size, solid, red and fleshy. Best of the early type. Popular home garden variety. Pkt. 10c; ½ oz. 30c; oz. 50c; 4 oz. \$1.50.

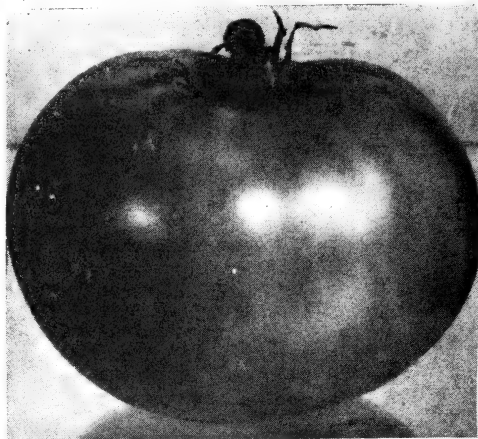
Ox Heart—90 days. One of the largest, heart shaped, solid, with few seed cells. Pkt. 10c; ½ oz. 45c; oz. 80c; 4 oz. \$3.00.

Livingston Globe—82 days. Globe shaped, purplish pink. Plant very vigorous and productive. Pkt. 10c; ½ oz. 30c; oz. 50c; 4 oz. \$1.75.

New Globe—85 days. Ball shaped fruit, skin purplish pink, flesh firm and contains few seeds, good cropper. Pkt. 10c; ½ oz. 30c; oz. 50c; 4 oz. \$1.75.

New Stone—84 days. Fruit large, smooth, solid and deep red, very heavy, vines productive and vigorous growing. Favorite canning variety. Pkt. 10c; ½ oz. 25c; oz. 35c; 4 oz. \$1.05.

Beefsteak or Crimson Cushion—90 days. Wilt resistant, late cropper, large fruit, flat, scarlet and rather smooth. Plant vigorous and of excellent variety for home garden. Pkt. 10c; ½ oz. 40c; oz. 75c; 4 oz. \$2.50



TOMATO

Nystate—68 days. Good home garden variety, used for its juice and canning. Fruit large sized, deep, flat and scarlet red. Pkt. 10c; ½ oz. 25c; oz. 40c; 4 oz. \$1.20.

Bonny Best—68 days. Vines strong and vigorous, productive and early main crop variety. Fruit deep scarlet ripening to stem. Pkt. 10c; ½ oz. 25c; oz. 45c; 4 oz. \$1.25.

Avon Early—66 days. Fruit uniform, deep scarlet, medium sized, almost globular in shape, flesh solid and tender. Pkt. 10c; ½ oz. 30c; oz. 50c; 4 oz. \$1.50.

Early Detroit—110 days. Vine vigorous, good producer, fruit round and globed shaped, purplish pink in color, firm and solid. Pkt. 10c; ½ oz. 30c; oz. 55c; 4 oz. \$1.60.

Greater Baltimore—78 days. Very good for canning, very productive, fruit deep scarlet, large, deep but flat, very firm and solid. Pkt. 10c; oz. 40c; 4 oz. \$1.25.

John Baer—66 days. Early, heavy producer, fruit deep scarlet red. Pkt. 10c; ½ oz. 20c; oz. 50c; 4 oz. \$1.60.

Chalks Early Jewel—68 days. One of the best early tomatoes, vines vigorous and very productive, fruit scarlet red. Pkt. 10c; ½ oz. 30c; oz. 60c; 4 oz. \$1.75.

Gulf State Market—73 days. Early, very productive, fruit medium large, smooth, solid and free from cracking. Pkt. 10c; ½ oz. 25c; oz. 45c; 4 oz. \$1.50.

Dwarf Stone—83 days. Dwarf and treelike, fruit bright red, flattened globe shaped, medium large. Pkt. 10c; ½ oz. 25c; oz. 55c; 4 oz. \$1.75.

Early Baltimore—70 days. Illinois University selection, thriving on all soils, smaller fruit, solid bright color, heavier yielder than Marglobe. Pkt. 10c; ½ oz. 30c; oz. 50c; 4 oz. \$1.50.

Break O' Day—63 days. Wilt resistant, nearly as early as Earliana and productive as Marglobe, fruit large smooth, red and globular. Used whole for salads or stuffed. Pkt. 10c; ½ oz. 30c; oz. 60c; 4 oz. \$1.75.

Pitchard or Scarlet Topper—70 days. Wilt resistant, heavy producer and color a brilliant red, fruit solid and firm. with thick walls. Pkt. 15c; ½ oz. 30c; oz. 55c; 4 oz. \$1.80.

Marglobe—73 days. Produces large, smooth, meaty, globelike fruit, scarlet red in color, suitable for trucking or canning. Resistant to nail-head rust and fusarium wilt. Pkt. 10c; ½ oz. 25c; oz. 40c; 4 oz. \$1.25.

Rutgers—74 days. Fruit medium to large, similar in shape to Marglobe but slightly more flattened. Good for canning and juice. Pkt. 10c; ½ oz. 30c; oz. 50c; 4 oz. \$1.45.

Golden Ponderosa—86 days. True golden ponderosa with yellow skin and flesh fruit, large and somewhat flattened. Pkt. 10c; ½ oz. 45c; oz. 80c; 4 oz. \$2.75.

Golden Queen—78 days. Large size, fruit bright golden yellow, thick and meaty, solid and fleshy, excellent flavor. Pkt. 10c; ½ oz. 40c; oz. 75c; 4 oz. \$2.10

TOMATOES (Small Fruited)

Red Currant—Very small, bright red.

Red Cherry—Fruit globe shaped, bright red, growth heavy and good producer.

Red Peach—Fruit peach shaped.

Red Plum—Resembling plum in shape and size.

Red Pear—Fruit 2 in. long, pear shaped.

Yellow Peach—Fruit yellow and peach shaped.

Yellow Plum—Resembling plum in shape and size.

Yellow Pear—Fruit 2 in. long, pear shaped.

Any of the above: Pkt. 10c; ½ oz. 35c; oz. 60c; 4 oz. \$2.00.

SQUASH (Summer Variety)

Benning's Bush—White type, small, light green markings; when this variety matures it loses its delicate flavor, so must be used when young and tender. Pkt. 10c; oz. 15c; 4 oz. 40c; ½ lb. 75c; lb. \$1.25.

Early White Bush, Scalloped—55 days. Most popular of the white summer type, considered one of the best for stewing, fruit small, quite flat, and white skinned, flesh light green, very vigorous grower. Pkt. 10c; oz. 20c; 4 oz. 60c; ½ lb. 90c; lb. \$1.75.

Yellow Summer Straight Neck—55 days. Golden orange in color, fruit warted flesh thick, light yellow. Much in demand because its straight neck makes it easy to pack. Pkt. 10c; oz. 20c; 4 oz. 60c; ½ lb. 90c.

Giant Summer Crookneck—56 days. Large early and productive. Deep orange skin and salmon orange flesh. Good for home and market. Pkt. 10c; oz. 20c; 4 oz. 60c; ½ lb. 90c.

Sweet Potato—55 days. Fine flavor, early and very prolific, fruit orange yellow, splashed and striped with dark green, flesh heavy and solid. Pkt. 10c; oz. 20c; 4 oz. 55c; ½ lb. 95c.

Italian Marrow or Zucchini—60 days. Bush type, very productive, excellent keeper, dark green in color, fruit small, very tasty and tender. Pkt. 10c; oz. 20c; 4 oz. 70c; ½ lb. \$1.25.

Cocozella or Italian Vegetable—60 days. Bush form, very vigorous in growth, fruit dark green, striped yellow and light green, medium large. Pkt. 10c; oz. 20c; 4 oz. 75c; ½ lb. \$1.25.



BREAK O' DAY TOMATO

TOMATOES (Yellow Fruited)

Jubilee—90 days. All American Bronze Medal winner 1943. Orange color, solid fleshed, fine flavored and delicious, thick-walled with few seeds, is non-acid. It is excellent for salad. The best yellow tomato ever grown. Pkt. 15c; ½ oz. 55c; oz. \$1.00.

SQUASH (Winter Variety)

Banana—110 days. A prolific, oblong type, having a gray-green shell, solid dry flesh and small seed cavity. Rather late maturing, good keeper. Pkt. 10c; oz. 25c; 4 oz. 65c; ½ lb. \$1.00.

Blue Hubbard—125 days. Solid orange yellow flesh, rind hard and strong, a good winter keeper. One of the best all around varieties. Pkt. 10c; oz. 25c; 4 oz. 75c; ½ lb. \$1.40.

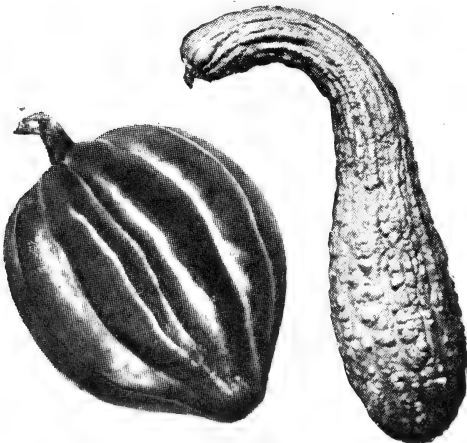
Delicious—115 days. Fruit broad, top shaped; flesh thick bright yellow, fine grained, fiberless, skin very dark green, thin but hard. Pkt. 10c; oz. 25c; 4 oz. 75c; ½ lb. \$1.40.

Golden Hubbard—110 days. Has shape and general character of the Hubbard, but is smaller and of a rich orange color instead of dark green. Pkt. 10c; oz. 25c; 4 oz. 75c; ½ lb. \$1.40.

Acorn or Table Queen—58 days. Flesh light yellow, shell dark green, thin and ribbed; fruit acorn shaped. Trailing variety, good producer, exceptionally good for baking. Pkt. 10c; oz. 25c; 4 oz. 75c; ½ lb. \$1.40.

Wanted Hubbard—120 days. Larger in size than the Hubbard but more heavily wanted, shell dark green, almost black, in color. Pkt. 10c; oz. 30c; 4 oz. 90c; ½ lb. \$1.75.

Mammoth Chili—120 days. Very good for exhibition, grown as large as 150 lbs. in weight. Fruit quite smooth, with broad open netting and rich orange yellow color. Good for stock feeding. Pkt. 10c; oz. 30c; 4 oz. 90c; ½ lb. \$1.75.



SQUASH

TURNIPS (Yellow)

Golden Ball—60 days. One of the most delicate and smallest yellow fleshed turnips, medium size but firm, hard and of good flavor, good keeper, fine as a table variety. Pkt. 10c; oz. 15c; 4 oz. 35c; ½ lb. 60c.

Amber Globe—75 days. Flesh yellow, fine grained and sweet. Hardy, keeps well and a good cropper. Good for field crops for stock. Pkt. 10c; oz. 15c; 4 oz. 35c; ½ lb. 60c.

TURNIPS (White)

Purple Top White Globe—55 days. Large, globe shaped; purple top, lower part white; flesh fine grained and tender. Best known.

Purple Top Strap Leaf—45 days. Tops medium large and strap leaved, roots flat, white with purple top, flesh white, fine grained and tender, early producer.

Any of the above: Pkt. 10c; oz. 15c; 4 oz. 35c; ½ lb. 60c.

Early Snowball—Medium large, light green tops; fruit globe shaped, fine grained and sweet, pure white skin and flesh. Good table variety.

Shogoin—Quick growing, popular in the south. Tops tall, bright green, strap leaves, may be used for greens. Roots smooth, white, globe shaped and of excellent quality.

Any of the above: Pkt. 10c; oz. 15c; 4 oz. 35c; ½ lb. 60c.

Extra Early Purple Milan—Strap leaved, upright growing. Roots white with purple top and flat; flesh sweet and tender, very good for early spring sowing. Pkt. 10c; oz. 15c; 4 oz. 35c; ½ lb. 60c.

Seven Top—48 days. Foliage hardy, used as greens. Roots used only for stock feeding. Pkt. 10c; oz. 15c; 4 oz. 35c; ½ lb. 60c.

RUTABAGAS

American Purple Top—Tops large and upright, roots yellow with purple top; flesh pale yellow, sweet, tender and fine grained, good cropper and keeper. Pkt. 10c; oz. 20c; 4 oz. 45c; ½ lb. 80c.

Golden Neckless—This is yellow, deep globe-shaped with purple top flesh, fine grained, tender and sweet. Excellent quality, good winter keeper. Pkt. 10c; oz. 20c; ¼ lb. 45c.

VICTORY GARDENS - - -

- - - "THIS IS IT"

V-1 - - A COMPLETE VICTORY GARDEN FOR \$0.50

One packet of each of the following: Lettuce, Carrot, Green Bean, Peas, Radish, Wax Bean, Corn and Beets.

This will plant plot 10 x 20 ft. **Value \$0.80**

V-2 - - FAIRWAY'S HOME VICTORY GARDEN \$1.00

One packet of each of the following:

- | | |
|-----------------------------------|--------------------------------|
| Carrots, Nantes Half Long | Sweet Corn, Howling Mob |
| Beets, Crosbys Egyptian | Tomatoes, John Baer |
| Green Beans, Stringless Giant Pod | Parsley, Champ. Moss Curled |
| Peas, Little Marvel | Sweet Corn, Golden Hummer |
| Radish, Imp. French Breakfast | Turnip, Purple Top White Globe |
| Radish, White Icicle | Swiss Chard, Lucullus |
| Wax Bean, Pencil Pod Wax | Cucumber, Fairways Long Green |
| Beets, Early Wonder | Lettuce, Grand Rapids |

These seeds will plant a garden 20 x 30 ft. **Value \$1.60**

V-3 - - FAIRWAY'S SUBURBAN VICTORY GARDEN . . . \$2.00

- | | |
|-----------------------------------|---------------------------------|
| 1/2 lb. each of | Turnip, Purple Top White Globe |
| Green Beans, Bountiful | Cabbage, Early Jersey Wakefield |
| Wax Beans, Surecrop | Sweet Corn, Golden Bantam |
| Lima Beans, Fordhook Bush | Sweet Corn, Early Evergreen |
| 1 pkt. each of | Lettuce, Grand Rapids |
| Carrot, Early Scarlet Horn | Lettuce, Iceberg |
| Carrot, Danvers Half Long | Radish, Imp. French Breakfast |
| Beets, Early Wonder | Radish, Long White Vienna |
| Beets, Detroit Dark Red | Pepper, California Wonder |
| Swiss Chard, Fordhook | Cucumber, Imp. Long Green |
| Spinach, Noble Giant Thick Leaved | Parsley, Double Curled |
| Tomato, Break O'Day | Squash, Acorn |
| Peas, Thomas Laxton | Salsify, Mammoth Green Island |
| | Onion, Southport White Globe |

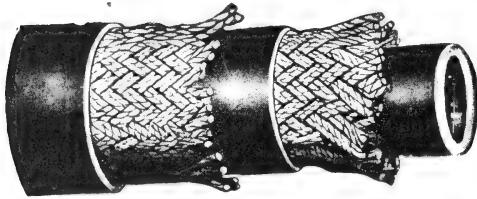
These seeds will plant a garden plot 40 x 60 ft. **Value \$2.95**

V-4 - - FAIRWAY'S COUNTRY VICTORY GARDEN . . . \$5.00

- | | |
|--|------------------------------------|
| 1 lb. each of | Cauliflower, Dry Weather, |
| Wax Bean, Surecrop | Endive, Deepheart Fringed |
| Lima Bean, Bush Henderson | Egg Plant, Black Beauty |
| Sweet Corn, Golden Hummer | Kale, Dark Green Curled |
| Peas, American Wonder | Kohlrabi, Early White Vienna |
| 2 lbs. of | Lettuce, Black Seeded Simpson |
| Green Bean, Giant Stringless Green Pod | Lettuce, Big Boston |
| 1 oz. each of | Muskmelon, Milw. Market |
| Beets, Detroit Dark Red | Parsley, Champ. Moss Curled |
| Beets, Early Wonder | Parsnip, Hollow Crown |
| Carrots, Danvers Half Long | Pepper, California Wonder |
| Onion, Southport White Globe | Pumpkin, Sugar Pie |
| Spinach, Noble Giant Thick Leaved | Peas, Edible Pod, Dwarf Grey Sugar |
| 1 pkt. each of | Radish, Crimson Giant |
| Broccoli, Large White Mammoth | Radish, White Icicle |
| Brussels Sprouts, Fairways Dwarf | Squash, Acorn |
| Cabbage, Early Jersey Wakefield | Swiss Chard, Fordhook |
| Carrot, Oxheart | Tomato, Earliana |
| Celery, Golden Plumed | Tomato, Pondersosa |
| Sweet Corn, Howling Mob | Turnip, Purple Top White Globe |
| Cucumber, Fairways Long Green | |
| Cucumber, Boston Pickling | |

These Seeds will plant a plot 100 x 100 ft. **Value \$7.55**

GARDEN HOSE



This two-braid hose is the best obtainable at present for garden and greenhouse. 3/4-inch smooth cover, 50-ft. lengths. Coupled. \$14.75

The best single-braid hose for garden use, 5/8-inch, fitted with couplings, 50-ft. lengths \$5.75.

CELEX GARDEN LABELS

New fast selling popular priced permanent garden markers. 3 1/2 inches long with copper wire attached. Weather mark with ordinary black pencil writing. May be erased and label reused. Packed in cellophane bag containing one dozen labels. One doz. 25c.

Wooden. For Pots.

	Unpainted		Painted	
	100	1000	100	1000
4-inch	\$.025	\$2.00	\$0.35	\$2.25
5-inch	.30	2.50	.40	2.75
6-inch	.35	3.00	.50	3.25
12-inch	.80	7.00	1.25	8.50

Tree, wired. 3 1/2 inch. 50, 25c; 100, 45c; 1000, \$3.20.

STAKES, Cane—Painted Green.

	100	1000
1 1/2 ft.	\$1.25	\$5.00
2 1/2 ft.	1.60	8.00
3 1/2 ft.	2.00	11.00

Weatherproof Pencils

For marking labels used outdoors. Will not rub off or fade. Each, 10c; doz. \$1.00.



"READY-FILLED" ANTROL SET

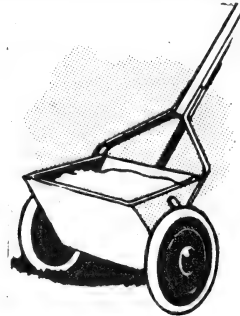
The Ready-filled antrol set consists of four patented glass "feeders" filled with regular Antrol Syrup. Price 40c per set. Also 4 oz. for 25c. pint for 50c.



"DOGZOFF"

DOGZOFF

Breaks dogs of bad habits. Spray under your Evergreens and guard them completely against the depredation of dogs. Non-poisonous. Per bottle 60c, by mail 70c.



FERTILIZER SPREADER

A Fertilizer Spreader gives better results for applying fertilizer evenly and accurately. May also be used as a grass seed sower, giving an even distribution of seed. Very simple to operate, easily adjusted. 16 inch width with 16 lb. capacity. Price \$4.00 f.o.b. Park Ridge, Ill.



SOIL SOAKER

For deep soaking, the water method approved by agricultural colleges and nurseries, now available for home use. Equipped with regular hose connection for attaching to hose or pipe. No. 0, 12 ft. \$1.40; No. 1, 18 ft. \$1.90; No. 2, 30 ft. \$2.90; No. 3, 50 ft. \$4.75.

INDEX

A

Abromia	5
Achillea	18
Acroclinium	5
Adonis	5
Ageratum	3, 5
Agrostemma	5
Alyssum	5, 18
"All-America" Selections	2
All Summer Garden - Inside Front Cover	
Amaranthus	5
Anagallis	5
Anchusa	5, 18
Annual Seeds	2 to 17
Antirrhinum	3, 5, 6
Aquilegia	19
Arabis	18
Artichoke	29
Asparagus	29
Asters	3, 6
Asters (Hardy)	18
Aubrieta	18

B

Baby's Breath	9, 21
Bachelor's Button (Centaurea)	7, 8
Balloon Vine	6
Balsam	6
Beans	27, 28
Beets	29
Begonia	6
Bellis	6
Bleeding Heart	20
Boltonia	18
Borecole (Kale)	34
Broccoli	29
Browallia	6
Brussels Sprouts	29
Bulbs, Summer Flowering	24, 25, 26

C

Cabbage	29, 30
Cabbage (Chinese)	29
Calendulas	7
Calliopsis	7
Campanula	7, 18
Canary Bird Vine	7
Candytuft	7, 21
Cantaloupe	36
Canterbury Bells (Campanula)	7, 18
Cardinal Climber	7
Carnations	7, 19
Carrots	31
Castor Bean	7, 14
Cauliflower	30
Celeriac	31
Celery	30, 31
Celosia	7
Centaurea	7, 8, 18
Chevil	33
Chicory	33
Chinese-Forget-Me-Not (Cynoglossum)	8
Chinese Lantern Plant	18
Chives	34
Chrysanthemum	8, 19
Clarkia	8
Cleome	8
Cobaea	8
Coleus	8
Collards	34
Collinsia	8
Columbine	19
Convolvulus	12
Coreopsis	19
Cornflowers	7, 8, 18
Corn, Hybrid	32
Corn, Sweet	31, 32
Corn, Pop.	32
Cosmos	8
Coxcomb (Celosia)	7, 8
Cress	33
Cucumbers	33
Cynoglossum	8
Cypress Vine	8

D

Dahlia	8
Dandelion	34
Delphinium	20
Dianthus	8, 20, 23
Dianthus Barbatus (Sweet William)	23
Dicentra	20
Dictamnus	20
Digitalis (Fox Glove)	20
Dill	34

Dimorphotheca	9
Dolichos	9
Dusty Miller (Centaurea)	7, 8

E

Edelweiss	20
Egg Plant	34
Endive	34
Escholtzia	9
Escholtzia, Bush (Hunnemannia)	10
Euphorbia	9

F

Fertilizers	48
Feverfew	9
For-Get-Me-Not (Myosotis)	9
Four O'Clock	9
Foxglove (Digitalis)	20
Fungicides	48

G

Gaillardia	9, 20
Garden Accessories	46
<i>Also Inside and Outside Back Cover</i>	
Garlic Sets	38
Gas Plant	20
Geum	21
Gilia	9
Gladiolus	24
Godetia	9
Gomphrena	9
Gourds	9
Grass Seed	Inside Front Cover
Gypsophila	21, 9

H

Hardy Pinks	20
Helianthus	10
Helichrysum	10
Heliotrope	10
Heteropappus	10
Hibiscus	21
Hollyhock	21
Horse Radish Sets	34
Hose	46
Humulus	10
Hunnemannia (Santa Barbara Poppy)	10

I

Iberis	21
Ice Plant (Mesembryanthemum)	10
Insecticides	48
Iris	S 21, b 25, 25

K

Kale	34
Kochia	10
Kohlrabi	34

L

Lantana	10
Larkspur	10
Lathyrus	21
Lavatera	10
Lavendula	21
Leek	35
Lettuce	35
Lilies, Seeds	21
Linaria	10
Lobelia	11, 21
Lunaria	21
Lupins	11, 21
Lychnis	21

M

Mangels	29
Marigold	2, 3, 11
Marvel of Peru	11, 9
Matthiola	11
Matricaria	9, 12
Melon, Musk	36
Melon, Water	36
Mesembryanthemum	12
Mignonette	12
Moonflower	12
Morning Glory	12
Mourning Bride (Scabiosa)	2, 3, 14, 22
Mustard	37
Myosotis	9, 12

N

Nasturtium	12
Nemesia	13

Nemophila	13
Nicotiana	13
Nigella	13
Novelties	3

O

Oenothera	13
Okra	37
Onions	37
Onion Sets	38
Oyster Plant	41

P

Pansy	13
Parsley	39
Parsonip	39
Peas	38
Penstemon	22
Pepper	39, 40
Perennials	18 to 23
Petunias	2, 3, 13
Phacelia	14
Phlox	2, 14
Pinks	8, 19
Poppy (Annual)	14
Poppy (California)	9
Poppy (Perennial)	22
Portulaca	14
Primula (Primrose)	22
Pumpkin	40
Pyrethrum	22

R

Radish	40, 41
Red Hot Poker	23
Rhodanthe	14
Rhubarb	41
Ricinus	7, 14
Rudbeckia	14, 22
Rutabaga	44

S

Salpiglossis	14
Salsify	41
Salvia	3, 14, 92
Scabiosa	2, 3, 14, 92
Schizanthus	14
Shasta Daisy	23
Snappedragon	5, 6
Spinach	41
Sprays and Dusts	48
Squash	43, 44
Statice	15, 23
Stocks	15
Straw Flowers	10
Sunflower	10, 41
Sweet Peas	3, 15, 21
Sweet William	23
Swiss Chard	41

T

Thionia	16
Tobacco	42
Tomato	42, 43
Tools	45
Torenia	16
Tritoma	23
Troilus	23
Turnip	44

V

Valeriana	23
Vegetable Seeds	27 to 44
Venidium	16
Verbena	16
Veronica	23
Vinca Rosea (Periwinkle)	16
Viola	23
Viscaria	16

W

Wall Flower	16
Wild Cucumber Vine	16

X

Xeranthemum	16
-------------	----

Z

Zinnia	2, 17
--------	-------

FAIRWAY'S HIGH GRADE FERTILIZERS

There are three chemical plant foods that are necessary to plant growth. Namely they are nitrogen, phosphates and potash. A well balanced fertilizer is one that contains all three, and gives to the crop these needed foods. The formula for fertilizers is usually expressed by numbers as follows, 10-8-6. The first number indicates the portion of nitrogen; the second number the portion of phosphates; and the third, the portion of potash.

Fertilizer prices include delivery within 5 miles of Park Ridge, Ill., on 25 lbs. or over. Smaller quantities, delivered with orders of seeds, bulbs or supplies amounting to \$3.00 or more, are prepaid. Over 5 miles, fertilizer prices, f.o.b. Park Ridge, Ill.

Aluminum Sulphate—For creating acid condition in the soil. 1 lb. 12c; 5 lbs. 50c; 25 lbs. \$2.00; 100 lbs. \$4.50.

Bone Meal—Steamed. A well balanced plant food that is easily handled. 5 lbs. 35c; 25 lbs. \$1.40; 50 lbs. \$2.35; 100 lbs. \$4.00.

Bone Meal, Rose Grower—Quick acting, free from acid, and well adapted for the home garden use. 5 lbs. 45c; 25 lbs. \$1.50; 50 lbs. \$2.50; 100 lbs. \$4.35.

Milorganite—Activated sludge fertilizer, free of weed seed, very easily used. Will not burn and feeds over a long time. 25 lb. bags, \$1.00; 50 lb. bags, \$1.65; 100 lb. bags, \$2.75.

Muriate of Potash—Can be used liberally especially for all root crops. 5 lbs. 50c; 25 lbs. \$1.50; 100 lbs. \$3.85.

Sheep Manure—A pure natural manure, excellent for mixing with soil for greenhouse plants. It promotes a rapid and steady growth. For liquid manure use one pound to five gallons of water. May be used daily with safety. 10 lbs. 75c; 25 lbs. \$1.25; 50 lbs. \$1.85; 100 lbs. \$2.75.

Shredded Cattle Manure—No offensive odor, and when spread over lawn and garden it works down into the soil and does not blow away. Manufactured from fresh cleanings from cattle pens. 10 lbs. 75c; 25 lbs. \$1.25; 50 lbs. \$2.25; 100 lbs. \$3.00.

Superphosphate—20% available. 10 lbs. 50c; 25 lbs. \$1.00; 50 lbs. \$1.65. 100 lbs. \$2.50.

Sulphate of Ammonia—20½% nitrogen available. Used where larger leaf development is desired and rapid growth is needed. Do not touch green growth. 10 lbs. 85c; 25 lbs. \$1.80; 50 lbs. \$2.60; 100 lbs. \$3.80.

Adco—Make your own manure, in your own garden. Use your old straw, cornstalks, hay or dried leaves. Adco contains nothing injurious to health or harmful to animal or plant life. Full instructions accompany each order. 7½ lbs. \$1.00; 25 lbs. \$2.50.

Nitragin—Garden size. Pkt. 10c; 3 for 25c. For garden peas, sweet peas, beans, lima beans and lupines. Each packet will treat about 6 lbs. of seeds. Prices subject to change without notice.

IMPROVED SPRAY and DUSTS

Add Postage According to Weight and Zone. Shipping weights, pint, 2 lbs.; qt., 3 lbs.; gal., 10 lbs.

Arsenate of Lead (Dry)—For dusting and spraying. Solves the problem of controlling practically all leaf-eating insects. ½ lb. carton, 20c; 1 lb. carton, 35c; 4 lbs., 95c.

Black Leaf 40—Is a solution of Nicotine Sulphate. It is highly recommended as a spray for soft bodied insects. For spraying only. Be sure to follow directions carefully. 1 oz. bottle, 35c; 5 oz. can, \$1.00, makes 40 to 100 gal.; 1 lb. bottle, \$2.40, makes 40 to 200 gal.; 2 lb. can, \$3.60, makes 200 to 500 gal.

Bordeaux Mixture (Dry)—In self-dusting package; can be used dry or as spray; when used as spray dilute 1 to 8. Lb., 35c; 4 lbs., 90c.

Fish-Oil Soap—For washing trees, vines and plants to prevent and destroy insects. Lb., 30c; 5 lbs., \$1.40; 10 lbs., \$2.40.

Flowers of Sulphur—For dusting. Lb., 15c; 5 lbs., 60c; 10 lbs., \$1.00.

Lime Sulphur (Solution)—A remedy for fungus diseases and San Jose Scale. Per qt. can, 50c; 1 gal., \$1.35; 5 gal. can, \$4.50.

Lime Sulphur (Dry)—Acts the same as the solution. 2 lbs., 35c

New Evergreen Spray—Non-poisonous spray effective against all injurious worms, beetles and aphids. No spreader needed. Directions on every package. Oz. bottle, 35c; 6 oz. bottle, \$1.00; 16 oz. bottle, \$2.25.

Nicotine Pyrox—For chewing and sucking insects. 20 oz. jar, 60c; 5 lbs., \$2.00.

Paris Green—A poisonous insecticide in powder form; for chewing insects. ¼ lb., 20c; ½ lb., 35c; 1 lb., 55c.

Pine Tar—For tree surgery. Stops bleeding of the sap. Pint, 40c; qt., 75c; gal., \$1.75.

Pyrox—Kills all leaf-eating insects; destroys fungus growth, blight and rot. Mixes easily in cold water; does not clog spray and sticks to foliage. 5 lbs. \$2.00; 10 lbs. \$3.50.

Red Arrow Garden Spray—Pyrethrum & Rotenone Non-poisonous, kills by contact, does not burn or stain tender foliage; oz. will make 4 to 8 gals. of spray. Oz., 35c; 4 oz., \$1.00; pint, \$2.85; qt., \$5.40.

Selocide—Kills red spiders. Gallon, \$4.00.

Slug Shot—Destroys potato bugs and those insects on tomatoes and egg plants, currant worms, cabbage worms and lice. 1 lb., 30c; 5 lb. tin, \$1.20.

Tobacco Dust—5 lbs., 40c; 10 lbs., 75c; 100 lbs., \$4.25.



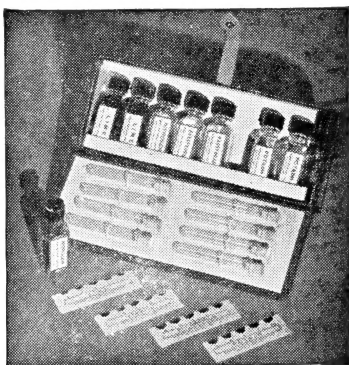
**A TWIST OF THE WRIST
AND THE PLANT IS TIED . . .** 'Twistems' are dark green strong tapes with wire reinforcing that make perfect plant ties. No twine or raffia or shears needed. For annuals, perennials, shrubs, vines and vegetables, excellent for arranging flowers. For nurseries, estates or amateur gardeners.

'TWIST-EMS'

Bundle of 250, 16 inch size, **\$1.00**
 Bundle of 250, 7 inch size **.50**

SUDBURY CLUB MODEL SOIL TEST KIT

\$4.75



This new model in the famous Sudbury line gives a complete season of soil testing at a far lower price than ever before. Makes 50 individual tests for nitrogen, phosphorus, potash and acidity, showing how to lime and fertilize for best results. Easy to use. Cased in handsome sturdy imitation leather. Made by the maker of professional soil test kits used by experiment stations, nurserymen, growers and greenskeepers throughout the country.

The Sudbury Club Model Soil Test Kit complete with instructions and helpful chart, \$4.75. Other Sudbury Soil Test Kits from \$2.00 to \$18.50.

Testing Fluid for Refills—Specify whether for nitrogen, phosphorus, potash or acidity. 2 oz. 75c; 6 oz. \$1.50.

HORMODIN

REG. U. S. PAT. OFF.

No 1 No 2 No 3 POWDER

Powder No. 1, 1 3/4 oz. tin \$0.50
 Powder No. 2, 1 3/4 oz. tin75
 Powder No. 3, 1 oz. tin 1.00

Combination Carton

Contains a package of each of the three Hormodin Powders sufficient to treat hundreds of cuttings, per carton \$0.75

Since different plants require different treatments. Hormodin Powder has been developed in three strengths, paralleling the range of hormones in nature.

POWDER No. 1

A general-purpose powder especially good for carnations, roses, poinsettias, chrysanthemums, and similar types.

POWDER No. 2

Designed for many of the woody and semi-woody types.

POWDER No. 3

Designed for the more resistant species including many evergreens and dormant leafless cuttings. The treatment is simple. The moistened stems are dipped into Hormodin POWDER (tap gently to remove excess powder), then placed in the usual propagating medium.

VIGORO

Has been used by Victory Gardeners with success. A complete plant fertilizer for vegetables and flowers, clean and odorless.

5 lbs. **45c** 25 lbs. **\$1.50**
 10 lbs. **85c** 50 lbs. **\$2.50**
 100 lbs. **\$4.00**

VICTORY GARDEN FERTILIZER

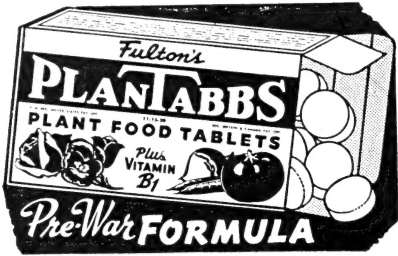
A balanced plant food that supplies the necessary minerals to make good crops.

5 lbs. fertilizes about 125 sq. ft.

Sold For Food Production Only.

5 lbs. . . **\$0.50** 25 lbs. . . **\$1.45**
 10 lbs. . . **\$0.80** 50 lbs. . . **\$2.35**
 100 lbs. **\$3.70**

Delivery subject to fertilizer regulations page 48.



Fulton's Plantabbs is the only tablet form plant food containing Vitamin B₁. Fulton's Plantabbs supply a complete balanced plant food of the high analysis 11-15-20, therefore when combined with Vitamin B₁ produces startling results. Vitamin B₁ contained in Plantabbs is a pure crystalline powder that remains fresh and potent at all times. Must not be confused with medicine tablets for humans which contain vitamins. Plantabbs are strictly for Plants and Flowers, both indoors and garden. Plantabbs with Vitamin B₁ makes vastly stronger root growth.

In boxes of 30 Tablets, 25c; 75 Tablets, 50c; 200 Tablets, \$1.00.



Irrigate your garden correctly. Save time and labor. Full volume delivered without force. No washing of soil—no damage to tender plants. Waterwand weighs only a pound. Easy to handle. Reach the backs of your deepest flower bed. May be left on the ground for long deep soaking. Waterwand irrigation encourages deep sturdy roots, makes plants drought resistant and longer-lived. Every gardener needs a Waterwand.

52 inch length recommended size . . . \$2.50
 35 inch length for potted plants 2.50
 19 inch length for bench work 2.50
 Fits standard garden hose.

PKT. 10 CENTS



"NEW PLANT LIFE"

The original liquid plant food blooms and grows wonder plants. "NEW PLANT LIFE" grows and blooms plants far beyond the housewife's fondest expectation. Economical, odorless, easy to use, will not burn. It grows all plants with equal success. A bottle of this concentrated liquid makes a sufficient supply for several hundred applications. Twenty years of actual proof. Prices: Small Size, 25c; Economical Size, 50c; Quarts, Gallons, etc., available. (Add 10c for Postage)